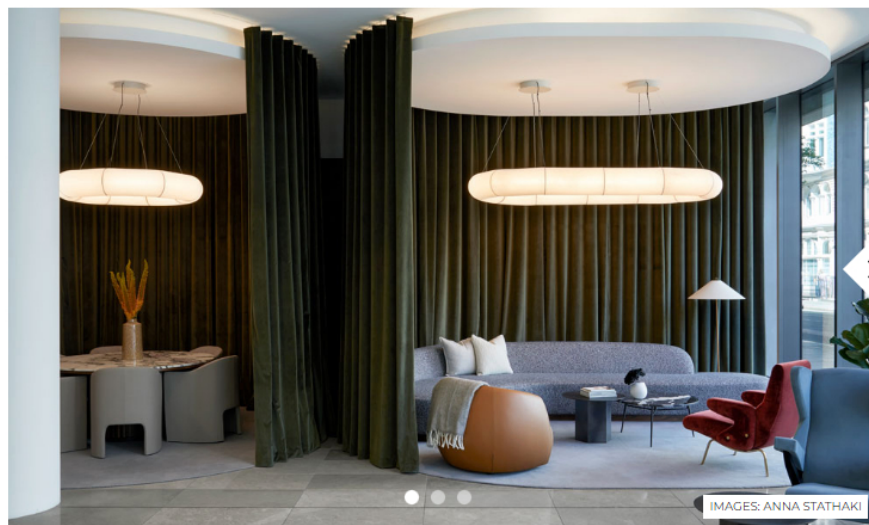


A sense of arrival: five creative welcome spaces

We explore a handful of recent projects that are reinventing the reception.

21/02/2023 • 2 min read



IMAGES: ANNA STATHAKI

Conran and Partners' clubhouse-style lobby

Conran and Partners' entrance experience for Wells and Moore at 45 Mortimer Street dilutes the boundaries between work and social, as well as those between workplace and hospitality. The result is a clubhouse-style lobby that responds to the new needs of the modern worker.

This reimagined welcome experience features a concierge-style coffee bar lobby, which sits in a flexible space that can be used for events, work and social purposes. That's made possible using soft partitions that can create intimate areas for meetings or individual work.

Opposite the reception, Conran and Partners crafted a series of flexible spaces using soft partitions to create semi-private areas for meetings or individual work. These include a cocooned lounge-like

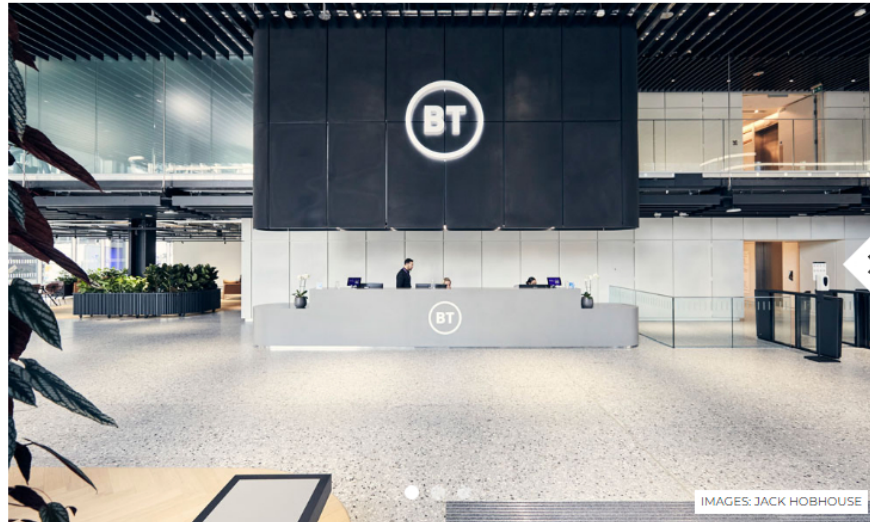
space with a mix of Italian and Scandinavian furniture and a roundtable meeting space.



A former police HQ turned mixed-use lobby at The Broadway

The arrival space at [The Broadway](#) – a 1million sq ft mixed-use development in Victoria – welcomes people in from a purpose-built pedestrian street, connecting St James' Park Station to Victoria Street. Transformed from its former life as the Metropolitan Police Headquarters, [Squire & Partners](#) used a family of three design languages as the basis of the interior, made up of light, medium and dark bone metals partnered with light and dark pre-cast concrete. Adjacent to retail units, the entrance contains furniture, fixtures and equipment selected by architecture and interior practice, [Nainoa](#).

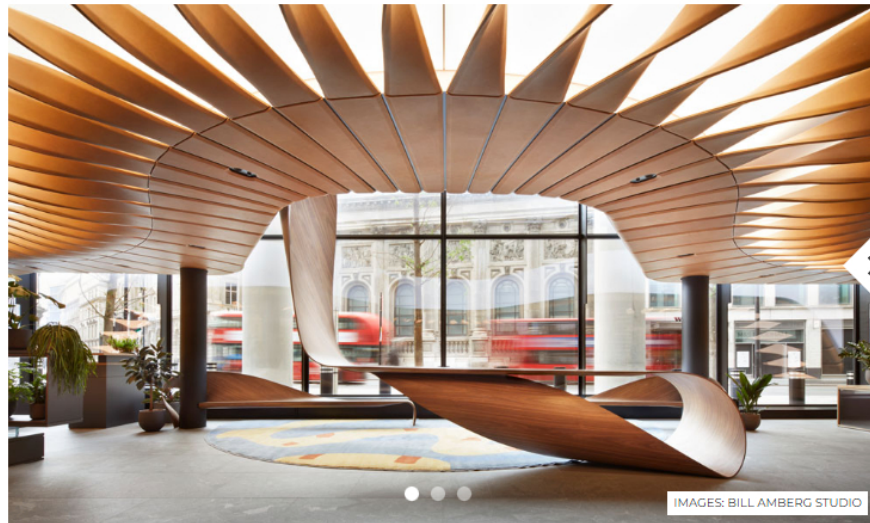
[Read More](#)



BT's 18-storey office welcomes workers into an exercise-encouraging reception

Staff and visitors at [BT's London hub](#) arrive into a double-height reception space on the ground floor, adjacent to a public café and retail spaces. With architecture by Wilkinson Eyre and interior designed by ID:SR, space and sightlines are clean with neutral colours and grand open spaces to welcome the 8,000 people that pass through each day. Wide staircases, prominently positioned, encourage users to physically move throughout the 18-storey building, with escalators tucked to the side of the core.

[Read More](#)



Bill Amberg Studio's architecturally impressive first impression at 22 Bishopsgate

[PLP Architecture](#) and [Bill Amberg Studio](#) worked together to construct a dramatic entrance at 22 Bishopsgate, London. Featuring flat and twisted leather panels which rise from the escalator soffit at ground level, the structure twists like a ribbon, up to and within the ceiling, before returning to floor level on the opposite side of the entrance hall. Demonstrating [Bill Amberg's craftsmanship](#) on a large scale, 22 Bishopsgate exemplifies the versatility of leather in modern interiors.

[Read More](#)



MAWD's experience-centric design for The Wingate's arrival space

[March and White Design](#) (MAWD) unveiled an art installation at [The Wingate](#), a modernist office building in the heart of Soho. Designed in collaboration with London gallery Edel Assanti and commissioning artist, Nathaniel Rackowe, the arrival space embraces the office's connection with its surrounding area – in a design that mimics Soho as daylight fades to night. "As an extension of the trend for experience-based offices, the traditional lobby has evolved from a transitory place to an immersive space that brings people together through a fusion of art, technology and experience-centric design," says James White, [MAWD's](#) co-founder.

[Read More](#)

BILL AMBERG STUDIO

CONRAN AND PARTNERS

MARCH AND WHITE DESIGN

SHEPPARD ROBSON

SQUIRE & PARTNERS

Share     

Related Articles

Inspiration for your next read



OTHER

Oktra crafts a multi-brand experience inside a former Victorian barn

Cowshed to curated: a workplace and retail space in the British countryside offers an immersive guest experience.

23/02/2023 • 2 min read



WORKPLACE | WELLBEING

Peldon Rose turns a 19th century stable into a playful workspace

The studio worked with BBS Capital on its first London home, retaining original architectural details at the storied site.

17/02/2023 • 2 min read



WORKPLACE | COWORKING

This new Stockholm co-working space gets the royal treatment

Helio Slottsbacken balances heritage and modernity at the brand's latest flexible workspace inside a 17th-century palace in Stockholm's Old Town.

16/02/2023 • 2 min read

The Mix Interiors Newsletter

Sign up here for our weekly newsletter: curated highlights and news from the world of commercial interior design.

Enter your email address...

Sign up

By entering your email address, you agree with the terms set out in our [privacy policy](#).



Mix Interiors

The Magazine for UK Commercial Interiors

Unit 2 Abito
85 Greengate
Manchester

Articles

Property
People
Products

Mix Interiors

About
Media Information
Magazine

M3 7NA
United Kingdom

Projects
Trends

Events
News
FAQs
Contact

© 2023 Mix Media Ltd.

[Terms & Conditions](#)

[Privacy Policy](#)

