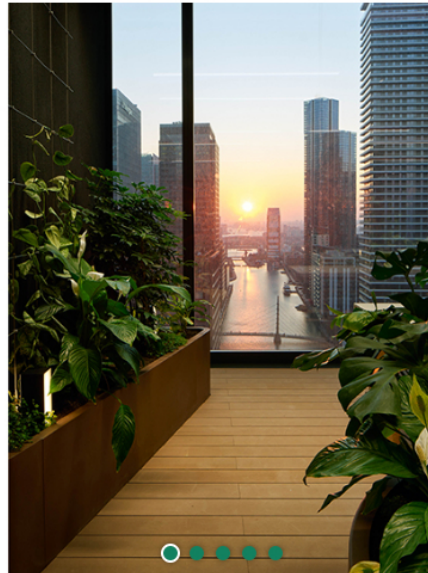



[Architecture](#)
[Interiors](#)
[Podcasts](#)
[Awards](#)
[Account](#)


WORLD INTERIORS NEWS



Click image to expand

Chalegrove Properties Limited.

Farrer Huxley

London residence unveils UK's highest tropical garden

Hannah Holt

5 hours ago

Landmark Pinnacle's 'Panoramic Sky Gardens' occupy the 27th floor of a 75-storey tower, and are home to over 3,500 plants, lounge furniture and a children's play area



The gardens, which take inspiration from Kew Botanical Gardens, were conceived and designed by Farrer Huxley and Squire & Partners. Gillespies were appointed to realise the scheme's planting vision, working with Phil Griffiths, Director of Verdant Horticulture and former Head Horticulturist at Kew Botanical Gardens.

The indoor garden embraces biophilia to ensure residents benefit from connecting with nature including wellness, productivity and socialising with other residents. Biophilia is an interior design approach which seeks to connect people with nature in order to boost their wellbeing.

With panoramic views over the City of London, the West facing London Square Garden is approximately 2,950 sq ft and features a series of lounge areas divided by gardens. It houses 1,288 plants, ranging in size from low level creeping plants to large 2.5 m high structural planting. The West Garden provides a calm space, with sofas and benches set around specially selected trees, shrubs and plants chosen to transform the space into a tropical oasis.

The East facing Sky Garden is approximately 3,400 sq ft and boasts 2,265 plants, creating a green and playable garden for residents. It boasts spectacular views over Canary Wharf and beyond. This garden is densely planted, much like a jungle, within raised, curved metal planters. A play trail running through the centre of the space takes twists and turns through the textural tropical and sub-tropical planting, allowing children to get

close up to the forms and textures of the planting. Vertical planting in the form of trellis running up the walls and metal tunnels along the play trail also gives height to the planting, both planted with climbing plants suitable for the internal conditions.

Key features of the gardens include:

- The gardens are designed to deliver a year-round, multi-sensory experience. Planting has been carefully considered to ensure it ignites all the senses, creating bursts of colour, texture, height and scents throughout the seasons, providing residents a dynamic and ever-changing experience. Ficus plants, such as figs, have been selected for their rubber-like, glossy leaves that stimulate the sense of touch, while more delicate plants with smaller leaves offer a different experience.
- Innovative in its transformation of a standard floorplate into a thriving environment for plants, the space has the optimum balance of light, humidity and temperature thanks to embedded technology that can be controlled at the flick of a switch. This green oasis will offer residents sanctuary amongst the planting, and a playable landscape to help foster a greater awareness of the natural world and improve well-being.
- The indoor ecosystem will be supported and optimised by sophisticated technological systems, delivering innovations in plant care. This includes low-energy LED's, light monitoring sensors, misters and airflow controls that are fed back into the BMS (Building Management System) - a computer-based control system installed in the building that controls and monitors the building's mechanical and electrical equipment. These features have been used to great effect at Kew Royal Botanical Gardens within their glass houses.

Key Facts

Brand:

Interior

Practice:

Chalegrove Properties

Gillespies

Squire & Partners

Farrer Huxley

Project Category:

Waterfront

Tall Buildings

Experiential Design

Residential

Multiple occupancy

Interior Products:

Product type

Biophilia

Location:

United Kingdom

London

Access Shared:

Registered user-only content

Project News

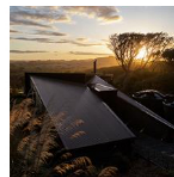
2022 WAN Awards entry:
BABYCARE Headquarters,
Hangzhou - UAD



13 June 22

BABYCARE Headquarters
by UAD is an entry in the
Fu...

2022 WAN Awards entry: The
Coast House - staceyfarrell.com



13 June 22

The Coast House by
staceyfarrell.com is an
entry i...

2022 WAN Awards entry: Pangong
Riverside Ecological Business
District (Pangong EBD) -
WILCOTER x KCAP



13 June 22

Pangong Riverside
Ecological Business District
(Pa...

2022 WAN Awards entry: Green
Grove Mall - Pace



13 June 22



Green Grove Mall by Pace is an entry in the Future...

2022 WAN Awards entry: The Redevelopment of Souk Al- Mubarakiya - Pace



13 June 22

he Redevelopment of Souk
Al-Mubarakiya by Pace is ...

[VIEW ALL](#)

Want to submit **your** project to
World Architecture News?

[CONTACT THE TEAM](#)

Text size [A](#) [A](#) [A](#)

Useful links

[Bulletins](#)
[Advertise](#)
[About us](#)
[Contact us](#)
[FAQ](#)
[Accessibility](#)

Terms of Use

[Terms & Conditions](#)
[Privacy Notice](#)
[Cookie Notice](#)
[Editorial Complaints](#)

WAN Network

[Female Frontier Awards](#)
[WAN Awards](#)
[WIN Awards](#)

haymarket © Haymarket Media Group Ltd. | [Terms & Conditions](#) | [Cookie Notice](#) | [Privacy Notice](#)

