

DESIGN & ARCHITECTURE

London: two new addresses overlooking the green

Enjoy the spectacle of nature even in the heart of the city at Chelsea Waterfront and Lancer Square.

di Micol Bozino-Picture

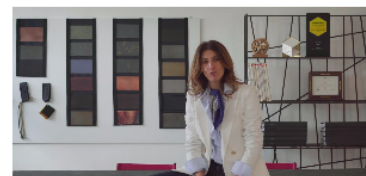
June 6, 2022



Press office

London is a multifaceted city: cosmopolitan, busy, hyper-built, but hides green corners capable of taking the observer by the hand and bringing him back to closer contact with nature. It is therefore not surprising that, according to a recent survey conducted by Knight Frank on the average values of properties, an apartment overlooking a park can cost 34% more than a counterpart without this peculiarity. Despite the prices, finding houses with these characteristics is


VIDEO



extremely complicated: Chelsea Waterfront and Lancer Square are two of the new addresses with unprecedented views of the gardens.

Chelsea Waterfront

ADVERTISING



Get £0 Joining Fee At PureGym!

PureGym - Sponsored

Visit Site

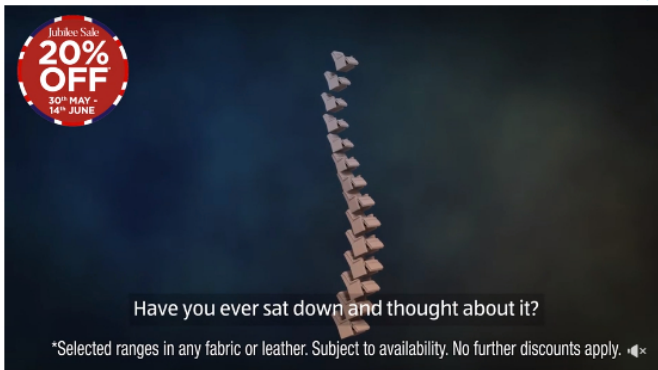
Chelsea Waterfront is a complex of 710 apartments, divided into 10 buildings, which stands on the last remaining river site between Chelsea and the city. The project bears the signature of the internationally renowned architect Sir Terry Farrell, while the gardens have been cared for by the well-known landscape architects Randle Siddeley Associates.



Photo press office

As for the buildings, which aim to be Hutchison Property Group's London calling card, they include a 37-story tower - the tallest residential building in SW10 - and a 25-story tower, two glass residential towers that they rise on either side of a landscaped stream, framing the iconic Lots Road Power Station.

ADVERTISING



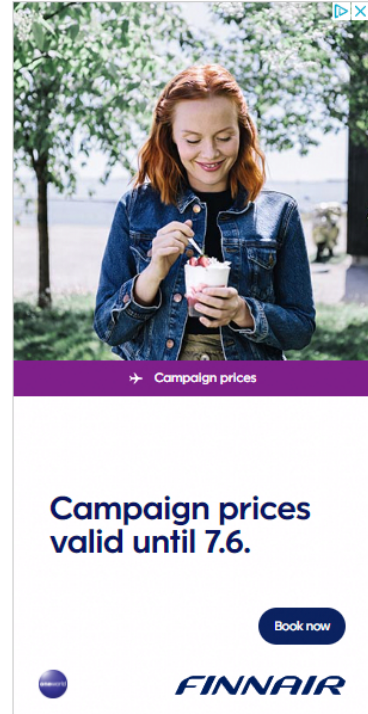
Jubilee Sale
20% OFF
30th MAY - 14th JUNE

Have you ever sat down and thought about it?

*Selected ranges in any fabric or leather. Subject to availability. No further discounts apply.



AD Loves Puglia



Campaign prices

Campaign prices valid until 7.6.

Book now

FINNAIR

MOST READ ARTICLES



Linen, microcement and wood are the ingredients of a...

by Karine Monie



14 ideas for organizing the kitchen pantry

by Gabriela Ulloa



Cognac-colored leather sofas, is a new trend on Instagram

by Valerie Prekelt



SPONSORED

Nasce Posy: la nuova luce floreale nella primavera progettuale di Masiero

Di Masiero

→ Campaign prices



Campaign prices valid until 7.6.

Book now





Press office

The landscaped part is the result of Randle's study, already winner of the silver medal at the Chelsea Flower Show with the impressive LG Smart Garden, which transformed the gardens of the 8.85 acres of the Chelsea Waterfront, taking its cue from the works of Chelsea Flower Show and Chelsea Physic Gardens. The result is an oasis with riverside views to Battersea and Chelsea Bridge, where the water gardens are seamlessly connected by three contemporary bridges over the existing stream, designed by Sir Terry Farrells.




Rockhunter

→ Campaign prices



Campaign prices valid until 7.6.

Book now



MOST READ ARTICLES



Linen, microcement and wood are the ingredients of a...

by Karine Monie



14 ideas for organizing the kitchen pantry

by Gabriela Ulloa



Cognac-colored leather sofas, is a new trend on Instagram

by Valerie Prekelt



SPONSORED

Nasce Posy: la nuova luce floreale nella primavera progettuale di Masiero

Di Masiero

→ Campaign prices



Campaign prices valid until 7.6.

Book now



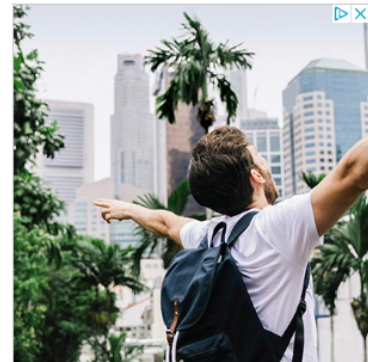
Lancer Square

It is rare to find new homes in London's Kensington Palace Conservation Area and Squire & Partners is the award-winning British architecture and design firm behind the construction of Lancer Square. The overall appearance and atmosphere are those of calm sophistication and on a human scale: on the other hand, this complex consists of only 36 finely crafted residences and includes one to four bedroom apartments and three penthouses. All draw inspiration from the architecture of Kensington Palace, the royal home of Princes William and Kate. Lancer Square itself stands on a piece of British history: here, originally, the grounds and vegetable garden of Kensington Palace were located and, subsequently, the Kensington barracks, which housed the cavalry and infantry,



Press office

A legacy evoked by the clean lines and the chosen materials, which refer to the symmetry and sophistication of Kensington Palace, as well as the garden with mature plants, sculptures and water features, designed as a focal point for the residents, who can look at it from the high from floor to ceiling windows, balcony or shared roof terrace.



→ Campaign prices

Campaign prices valid until 7.6.

Book now



MOST READ ARTICLES



Linen, microcement and wood are the ingredients of a...

by Karine Monie



14 ideas for organizing the kitchen pantry

by Gabriela Ulloa



Cognac-colored leather sofas, is a new trend on Instagram

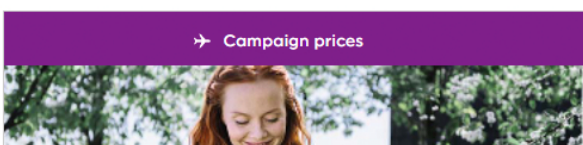
by Valerie Prekelt



SPONSORED

Nasce Posy: la nuova luce floreale nella primavera progettuale di Masiero

Di Masiero



→ Campaign prices

Campaign prices valid



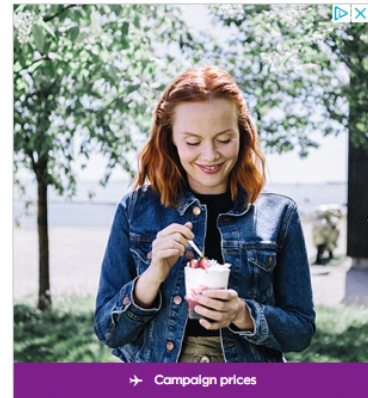


prices valid until 7.6.

Book now



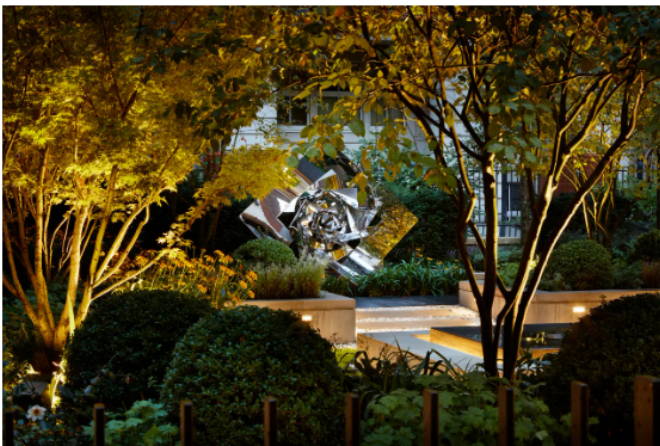
Press Office



→ Campaign prices

Campaign prices valid until 7.6.

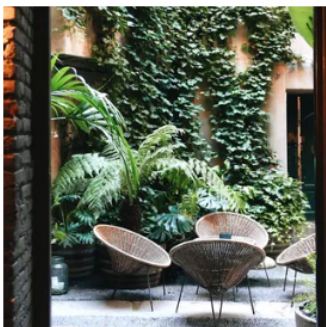
Book now



Press office

Topics news Real Estate

AD RECOMMEND



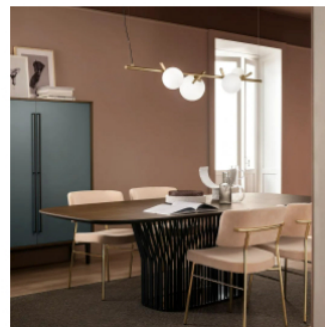
LIFESTYLE

A secret garden in Milan and the recipe for a very special...



CASE

For sale a garden apartment near the Place de la Concorde,...



SPONSORED

Nasce Posy: la nuova luce floreale nella primavera progettuale di Massimo...



CASE

A cottage in the Catskill Mountains where two Brooklyn...

In Milan, a small corner of greenery, where you can take refuge to enjoy the excellent drinks of the expert mixologist Gabriele Dodi. But also to savor Italian cuisine contaminated by exotic flavors.

by Marilena Pitino

A checkered floor, a courtyard with "green" walls, rattan furnishings and a tree-lined garden make this apartment look like a country house, but in the heart of Paris. On sale at the Daniel Féau agency.

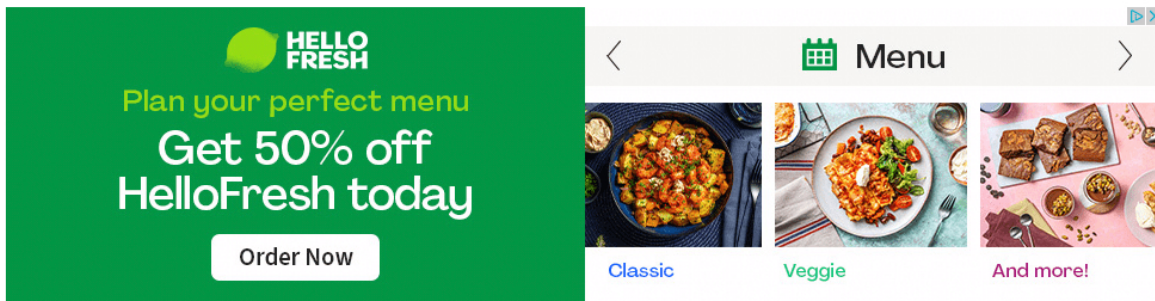
by Fanny Guénon des Mesnards

MASIERO

Di Masiero

A small chalet in the mountains where nothing is really missing.

by Morgan Goldberg



The image shows a HelloFresh advertisement on the left and a mobile menu screenshot on the right. The advertisement has a green background with the HelloFresh logo at the top. Below the logo, it says "Plan your perfect menu" in yellow, "Get 50% off HelloFresh today" in white, and a white "Order Now" button. The menu screenshot shows a "Menu" header with a calendar icon, a back arrow, and a close button. Below the header are three food images: a bowl of pasta labeled "Classic", a plate of vegetables labeled "Veggie", and a plate of bread and other items labeled "And more!".

AD

Enter the world of AD, your furniture, art and design magazine: discover the latest news, current trends and industry players every day!



Find out the latest news

- News
- Case
- Design & Architecture
- Lifestyle
- Travel
- Art
- AD Loves
- AD CULTURE CLUB

Condé Nast Italia

- Vanity Fair
- Wired
- Vogue
- GQ
- The Italian kitchen

[Advertising](#) | [Editorial board](#) | [Subscription](#) | [Terms and conditions](#) | [Privacy e Cookie](#)

[MANAGE COOKIES](#)

[AD Italy](#) ▾

©: Editions Condé Nast spa - Piazza Cadorna 5 - 20123 Milan cap.soc. 2,700,000 euro IVCF AND VAT reg. Milan no. 00834980153 company with sole shareholder