



ARCHITECTURE LANDSCAPE SQUARE QATAR SQUIRE & PARTNERS HUFTON + CROW

Msheireb Downtown Doha by Squire & Partners

本文由 Squire & Partners 授权moool发表, 欢迎转发, 禁止以moool编辑版本转载。

Thanks to Squire & Partners for authorizing the publication of the project on moool, Text descriptions and photos provided by Squire & Partners.

Squire & Partners: 经过一系列的竞争与角逐后, 我们最终被选中成为英国著名建筑师团队的一员, 参与卡塔尔多哈历史中心美夏尔城的总体规划。该总体规划占地31公顷, 共包括226栋建筑, 旨在为27000名居民提供住宿、酒店、国家档案馆、剧院、博物馆和文化遗产区等设施。

Squire & Partners: Following a competitive process, Squire and Partners was selected to be part of a prestigious team of UK architects working on the Msheireb Downtown Doha masterplan in the historical centre of Doha, Qatar. The masterplan creates 226 buildings over 31 hectares providing accommodation for 27,000 residents, hotels, a national archive, theatre, museum and heritage quarter.

最新招聘



2022 L&A Design Recruitment In China



2022 JEGOPLAY Group Recruitment In Shanghai, China



2022 JMD Landscape Design Recruitment In Hanzhou&Changsha, China



2022 AGO Landscape Design





© Squire & Partners

▽场地区域概况 Site Location



© Squire & Partners

这次的设计期望通过创建新的城市中心，重新打造一种根植于卡塔尔文化和气候的生活方式，来支持未来社会和公民活动，从而扭转该地区依赖于汽车运输的同质化发展模式。

The project seeks to reverse the pattern of development in the region for homogenised developments reliant on car transportation, by creating a city centre which recreates a way of life rooted in Qatari culture and climate and is designed to support social and civic activities.



2022 AUBU Landscape Design Recruitment In Chengdu, China



(2022) Zinialand Landscape Design Recruitment in Chengdu/Chongqing/Xi'an/Shenzhen/Zhengzhou, etc. in China



(2022) A&N Shangyuan Landscape Design Recruitment in Chongqing/Chengdu/Shanghai, etc. in China



(2022) LISM Landscape Design recruitment in Chongqing/Beijing, China



(2022) Weimar Group Recruitment in Shanghai/Shenzhen/Xi'an, etc. in China

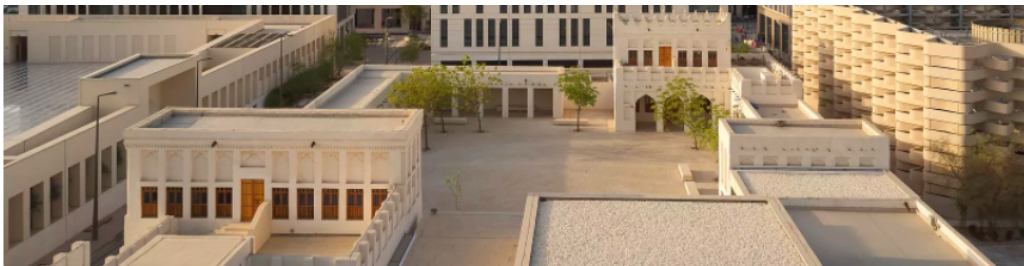


(2022) WATERLILY Recruitment in Shanghai, China



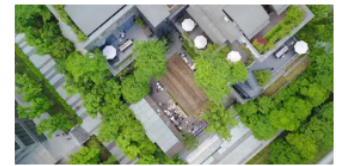
(2022) YASDESIGN Recruiting in Shanghai, China





© Hufton + Crow

(2022) USAD Recruitment in Shanghai, China



(2022) WTD Recruiting in Chongqing/Shanghai/Wuhan, China



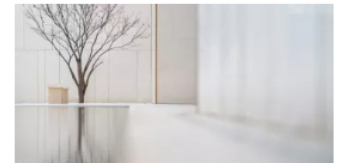
© Hufton + Crow



(2022) LEDA Landscape Recruitment in Chengdu, China



GVL Recruiting in Guangzhou/Shanghai/Chongqing, China



(2022) ZSD Recruiting in Hangzhou, China





© Hufton + Crow

Squire & Partners公司在该项目的第二和第三阶段，主要负责设计六座建筑，包括公寓、办公楼、零售、餐厅和酒店。该总体规划的愿景要求创造根植于卡塔尔本土文化的建筑，因此我们选择通过融合传统卡塔尔建筑与现代和可持续的设计方法来回应。新建筑响应总体规划指南，分别从原有的规模、简单的形式、非正式的建筑布局、活动屋顶、可修饰光线的分层和装饰，以及强调可持续性，来应对当地环境的挑战。

Squire & Partners was responsible for designing six buildings in Phases 2 and 3 of Msheireb Downtown Doha, creating apartments, offices, retail, restaurants and a hotel. The masterplan vision required the creation of a new vernacular rooted in Qatari culture, which the practice responded to by fusing traditional Qatari architecture with a modern and sustainable approach to design. Designs responded to the masterplan guide which took cues from historic proportions, simple forms, informal arrangement of buildings, active rooftops, the use of layering and ornamentation to modify light, and a strong emphasis on sustainability responding to the challenges of the local environment.





© Hufton + Crow



© Hufton + Crow





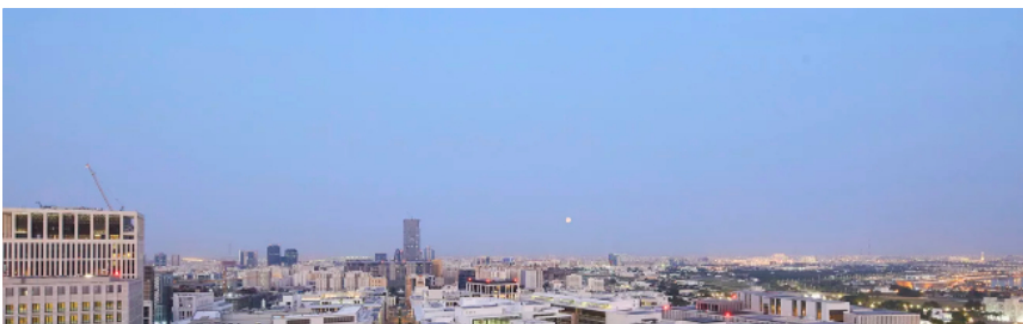
© Hufton + Crow

通过不同的速度、节奏和趣味来考量建筑之间的空间，创造出建筑多样性和统一性、空间活力和宁静以及光影微妙处理的平衡关系。

Spaces between buildings were considered through pace, rhythm and interest, creating a relationship which plays with diversity and unity in architecture, vibrancy and tranquillity of space and the delicate handling of light and shade.



© Hufton + Crow





© Hufton + Crow

项目：多哈市中心美夏尔城

客户：美夏尔地产

状态：2019年完成

地点：卡塔尔 多哈

摄影师：Hufton + Crow

团队：

Allies & Morrison——建筑总体规划

Arup——合作规划设计

AECOM——合作规划设计

其他合作团队：

Eric Parry Architects

Adjaye Associates

Michel Mossessian

John McAslan

Gensler

HOK

Mangera Yvars

Project: Msheireb Downtown Doha

Client: Msheireb Properties

Status: Completed 2019

Location: Doha, Qatar

Photographer: Hufton + Crow

Team:

Allies & Morrison – masterplan architect

Arup – co-masterplanners

AECOM – co-masterplanners

Collaborating architects:

Eric Parry Architects

Adjaye Associates

Michel Mossessian

ABOUT US

Moool木藕设计网（重庆木藕文化传媒有限公司）致力于传播全球优秀设计理念，聚焦景观设计行业，发现和展示优秀的设计作品。

微信公众号：moool木藕设计网

投稿邮箱：moool-serv@qq.com

FOLLOW US



SEARCH

