

Rolling Stock Yard | by Squire & Partners

01
MAR 2022

EDITOR: **ELPIDA ROIDOU**
CATEGORY: **ARCHITECTURE**



0 COMMENTS



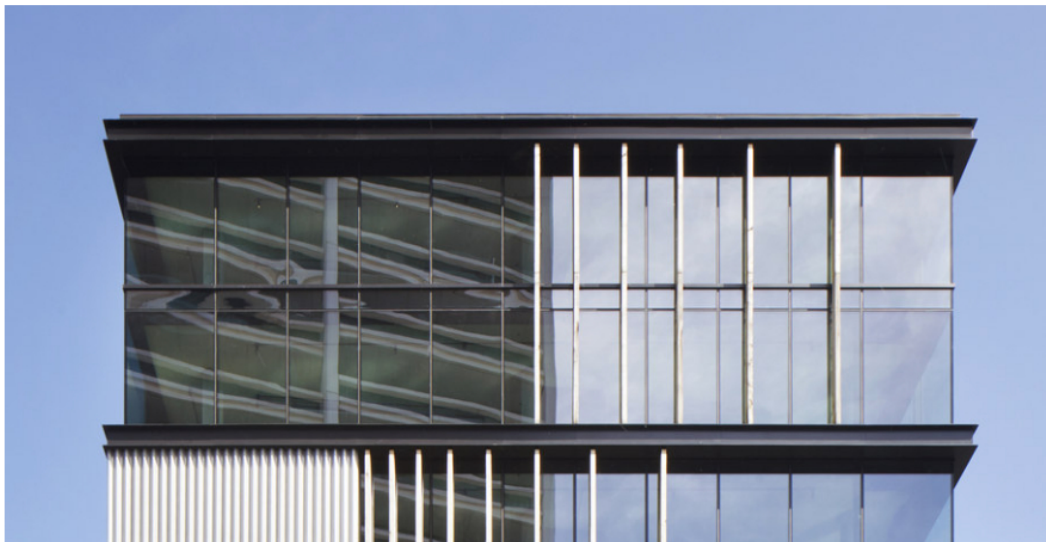
SHARE THIS



ALL PHOTOS

Squire & Partners has completed Rolling Stock Yard, a new development in King's Cross designed as a contemporary response to its industrial setting providing 57,500 sq ft of workspace for creative small to medium sized businesses. The design concept draws on the area north of King's Cross St Pancras, historically characterised by the machinations of transport, freight and industry, and now an emerging creative quarter.

-text by the authors





Converging *railway lines* and shipping containers are referenced in the nine storey building, expressed as a series of stacked elements with a black profiled steel structure emulating *parallel railway tracks running horizontally across the facades*. Within this horizontal grid, *full height glazing is softened by a layer of vertical solid oak sleepers* and sinusoidal perforated metal screens to offer privacy and shade during daylight hours, and emit a diffused glow at night.

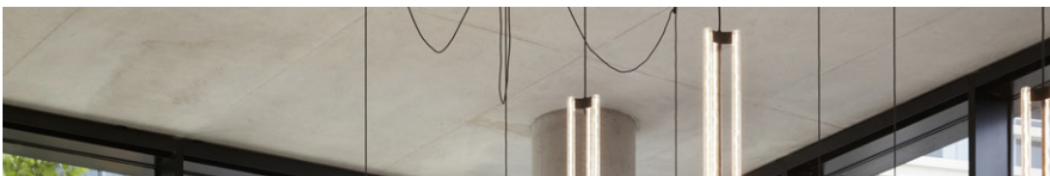




At *pavement level* the building animates the street with *bespoke illuminated entrance* signage behind a corrugated metal screen, and a *double-height office entrance* addressing York Way. *Internally an industrial palette of exposed concrete, blackened steel* and *perforated aluminium* is balanced by a pair of timber-lined recesses for the reception and café. Unifying the space is a pale grey poured resin floor with inlaid track patterns which define routes from the entrance to the reception, lifts and café.



Suspended filament *lighting elements hang vertically at assorted heights* above a bespoke rug, which continues the graphic of converging rail tracks. *Low comfortable seating on leather sofas*, wing backed armchairs and upholstered benches create a comfortable waiting area for visitors.





For building users and guests, the [Rolling Stock Café within the main entrance offers raised seating](#) at high tables with access to power and data, and [additional space on a mezzanine level with more informal and lounge seating](#). The two levels are connected by a [folding metal stair](#), behind which a [large-scale commissioned painting](#) by celebrated London [artist Barry Reigate](#) provides a playful backdrop.





Combining cartoon imagery and graffiti with geometric shapes and cultural references to King's Cross, the **site specific work projects a dynamic urban attitude**. At 12m x 6m the installation is Reigate's largest work to date, and was applied layer by layer over 5 weeks using **monochromatic tones to complement the building's industrial palette**. The work is presented as an architectural element within the space, drawing on the local built environment and encouraging people to move around the space to discover different aspects of the painting.



Lift lobbies feature bespoke floor numbering graphics on the reveal and blackened steel lift doors. Wayfinding tracks within the resin floor continue into the lift car.

Office spaces benefit from **natural light** on three sides – all four on the upper level – and **every floor has operable windows** to allow for **natural cross ventilation**. **Exposed concrete ceilings** continue the industrial aesthetic, with suspended lighting tracks directing light up and down. **Circulation on each level** is marked with a backlit perforated metal screen, leading to the lift lobby and toilets.





A 140sqm **private roof** terrace with planters and feature linear floor lighting is created on the upper level, offering

views across the skyline.

WC's are designed as superloos, self-contained cubicles which include a *black Corian worktop* and splashback, sink, *large mirror and vertical feature lights*. The back wall of each cubicle is lined with panels of natural ply featuring an engraved pattern depicting freight containers.



300 square metres of *roof space* has been *planted with wildflowers and grasses* chosen to support local populations of birds, bees and butterflies. On top of this planted bed are *120 solar panels*, with a further 80 panels on the south façade, providing the building with a sustainable energy source.



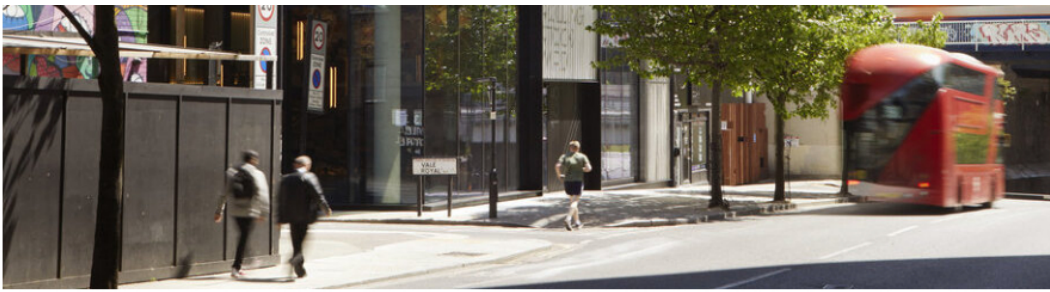
Capable of responding to the needs of growing companies, the *building* is *presented as an adaptable collection of working spaces* offering units ranging in size from 150 to 680sqm. Rolling Stock Yard tenants have access to generous *cycle storage, showers, lockers and a reception café* and breakout space.





Branding and wayfinding were conceived as an evolution of the architecture and interiors concept, by Squire & Partners' in-house branding agency Mammal. Referencing the railways and freight industry of King's Cross, Mammal established a *palette of rust orange, blue and white with a graphic identity based on parallel and converging lines.*





Mark Goldbart, Newmark Properties LLP:

“Our **vision** for the site – just north of Granary Square and Coal Drops Yard – centred around **creating a new destination for creative enterprise** which builds on Tileyard’s growing cultural community. We wanted the building to have a strong connection with post-industrial King’s Cross, and **celebrate contemporary architecture**. Squire & Partners’ approach established a strong aesthetic drawn from the historic roots of the area, and created generous and light filled workspaces with inspiring communal spaces to bring building occupiers together”.



Henry Squire, Partner, Squire & Partners:

“The **design of Rolling Stock Yard** takes cues from **local rail and freight industries**. Converging railway lines and shipping containers are referenced, expressed as a series of stacked elements with a black profiled steel structure emulating parallel railway tracks running horizontally across the facades. Within this horizontal grid, full height glazing is softened by a layer of vertical solid oak sleepers and sinusoidal perforated metal screens to offer privacy and shade during daylight hours, and emit a diffused glow at night.





At pavement level the building animates the street with bespoke illuminated entrance signage behind a corrugated metal screen, and a double-height office entrance addressing York Way. *Branding and wayfinding were conceived as an evolution of the architecture and interiors concept*, by our in-house branding agency Mammal. Referencing the railways and freight industry of King's Cross, Mammal established a palette of rust orange, blue and white with a graphic identity based on parallel and converging lines".



Plans



SITE PLAN



GROUND FLOOR PLAN



RECEPTION PLAN



MEZZANINE PLAN



TYPICAL OFFICE FLOOR PLAN



8TH FLOOR PLAN



SECTION

Credits & Details

Client: Newmark Properties LLP

Building Owners: Deepdale Investment Holdings Ltd

Architecture: Squire & Partners

Interior Design: Squire & Partners

Branding: Mammal Design

Project Manager: Rougemont

Structural Engineer: Davies Maguire

M&E Engineer: Atelier Ten

Cost Consultant: Currie & Brown

Planning Consultant: Tibbalds

Contractor: Volker Fitzpatrick

Mural artist: Barry Reigate

Photographer: Jack Hobhouse

Links: [SQUIRE & PARTNERS](#)



LEAVE A REPLY

Your email address will not be published. Required fields are marked *

NAME *		COMMENT
EMAIL *		

SUBMIT YOUR COMMENT

Confirm you are NOT a spammer



RELATED ARTICLES

ARCHITECTURE

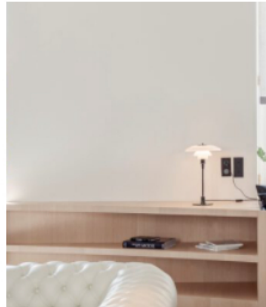


28 FEB 2022

85 Social Housing Units: the largest wooden-structured residential building in Spain by Peris+Toral Arquitectes is among the 7 finalists for the 2022 EU Prize for Contemporary Architecture - Mies Van Der Rohe Award

by MELINA ARVANITI-POLLATOU

INTERIORS



26 FEB 2022

Nicolai Paris: a home away from home | by noa* architects

by VALIA KAVALLA



PREV.

NEXT



LAST MODIFIED: MAR 02, 2022

SUBSCRIBE TO OUR NEWSLETTER

TYPE YOUR EMAIL

Archisearch will use the information you provide on this form to stay in touch with you. We will treat your information with confidentiality and will not share it with others. For more information, visit our our Privacy Policy page. By clicking below, you agree that we may process your information in accordance with these terms.



I AGREE WITH THE ABOVE TERMS

SUBSCRIBE >

> SUBMIT A STORY

> DISCOVER THE EVENTS

> FIND A JOB

> ADVERTISE

> PRIVACY POLICY

