

Squire & Partners takes inspiration from Kensington Palace at Lancer Square

Squire & Partners total design approach celebrates contemporary and traditional craftsmanship, establishing a new destination for living, working and dining in Kensington.

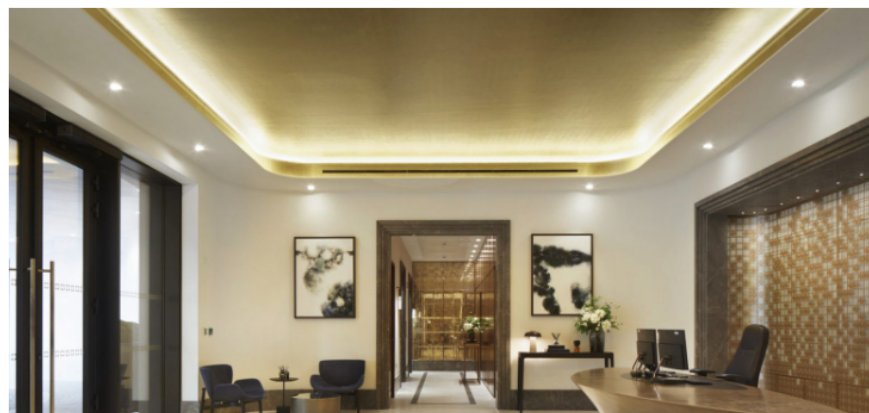
20/12/2021 • 2 min read



Squire & Partners has completed Lancer Square, a mixed-use scheme comprising residential apartments, leisure, ground floor retail and cafes, a new office building and a landscaped public courtyard.

The design of Lancer Square is rooted in place from the urban scale down to the final details of the development, with nature always playing a part. Interiors take inspiration from Kensington Palace – from its grand proportions to its flow of spaces. The main reception area of the private residences features a procession of spaces, with lift lobbies flowing from left to right. A coffered ceiling amplifies the height of the space, and the grandeur of the palace is picked up on with a gold leaf finish inspired by its ornate painted ceilings.

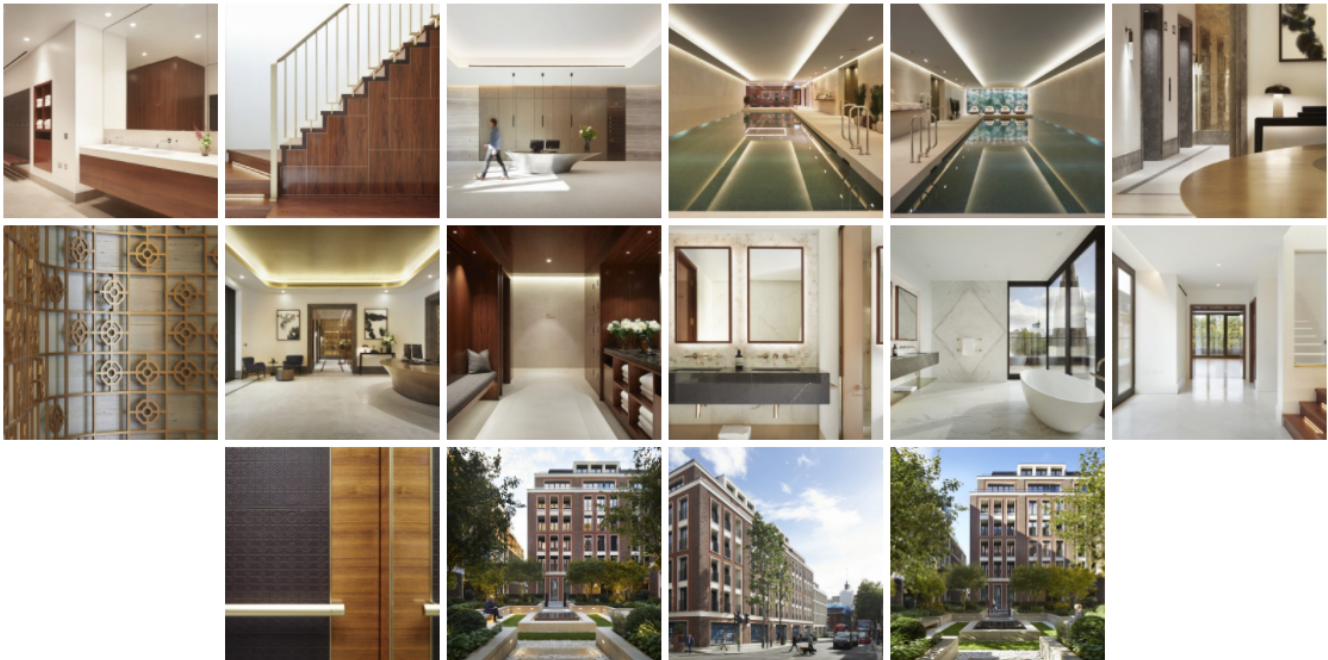
The architecture is a contemporary interpretation of the architectural character found within the Kensington Palace Conservation Area, drawing inspiration from the site's palatial and horticultural past as the original palace grounds and kitchen garden. The textured two-tone brick façades and vertical window proportions create connections with Kensington Palace and celebrate traditional and contemporary craftsmanship. A new landscaped public garden by Scape Design continues the tradition of west London garden squares and references the former use of the site.





Inside, apartment entrances are flooded with daylight and flow into an enfilade of rooms, with timber-lined portals around key openings to demarcate thresholds. A rich palette of warm and luxurious materials includes Emperador stone, walnut timber veneer and oak floors. Ironmongery in champagne gold complements calacatto oro stone in master bathrooms and silk georgette in secondary bedrooms. Bespoke kitchens have contrasting dark bronze slim panel doors and calacatto oro splashbacks. Views out of apartments are expanded upon with loggias that offer discreet but generous inside-outside living.

The office building features a timeless reception space with silk georgette on the walls paired with nickel lift doors and feature signboard. A leather wall and niche provide an intimate area for seating opposite the silk lined walls against which the reception desk is set. Efficient office floors employ a simple palette with rich finishes within the WC areas, and a unique lower ground floor office features high ceilings and cathedral-like openings that provide natural lighting deep into the plan.



LIVING

SQUIRE AND PARTNERS

WORKPLACE

Share



Related Articles

Inspiration for your next read

