

ARCHITECTURE | 20 HOURS AGO

## Design-conscious co-working spaces around the world

Modern workspaces must be adaptable and ergonomically sound. Cast iron, plywood and hanging plants are also requisite. Dispatching from creative companies and desirable desk spaces, we track down the designers responding to our evolving working behaviours. Are you sitting comfortably?

[f](#) [t](#) [p](#) [in](#) [➔](#)

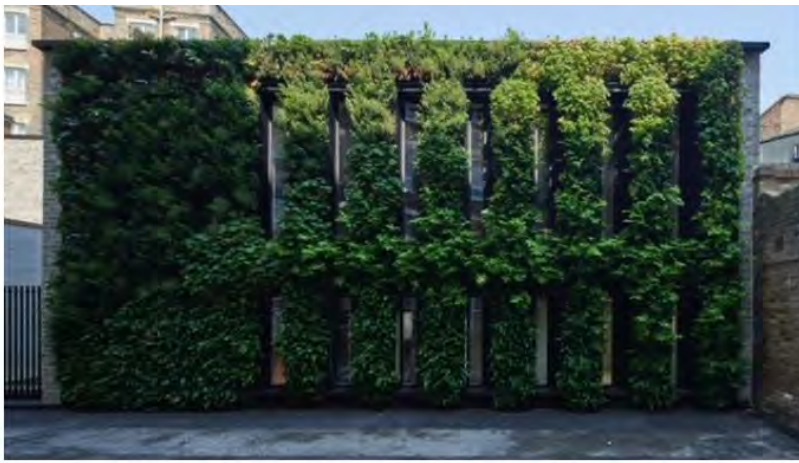


### Assembly, USA

### Campfire & Co

Housed in the historic former Ames & Brownly department store in Norfolk, Virginia, Assembly is a modern co-working set up created by Campfire & Co. Balancing old and new, as well as the varying needs of a contemporary, post-pandemic workspace, flexibility is key in this design - as are a sleek, yet warm design with lots of natural light and materials. Apart from meeting rooms, hotdesking areas and traditional office, amenities include a library, game room, a wellness/mother's room, a podcast/recording booth and bike share scheme and bike storage. *Photography: Thibaud Guerin-Williams*





## Plantworks, UK

### Marek Wojciechowski Architects and Kono Designs

Conceived by financier Clemente Cappello and featuring a design by Marek Wojciechowski Architects and Kono Designs, Plantworks is the latest addition to the vibrant Kings Cross scene. Including some 10,000 plants in various forms and set ups, this development boasts to be 'the first urban farm office development'. Cappello says: 'Working amongst biophilia reduces illness, stress and mental health issues whilst stimulating positivity, creativity and teamwork and can reduce sick days by 20%. My vision is to harbour the benefits of plants to attract talent, reduce sick days and foster wellbeing within the workplace. The office is now very much part of a company's brand image and plays a greater role in attracting and retaining talent.'



## Bureau, UK

### Ror Barr

Launching with London Design District at the Greenwich Peninsula this month, Bureau is the capital's newest workspace offering. Balanced between office



month, Bureau is the capital's newest workspace offering. Balanced between office architecture and members' club, Bureau has landed to provide post-pandemic respite to the city's tired creative workforce – a step away from both traditional office space and working-from-home set-ups, and a clearly defined concept that stands apart from co-working space peers. With interiors designed by architect Roz Barr, this creative club is the latest evolution in its genre – a 'hybrid third space', combining the freedom and flexibility of home working, with the focused structure, support, and sociability provided by the office environment, its creators explain. Barr's ideas on what constitutes the perfect modern workspace were already in development, as the architect gathered notes from past, pre-pandemic projects, such as Selfridges' creative studios. But with Bureau and the pandemic, everything sped up. The architect told us back in February, when we previewed Bureau's space: 'With Selfridges it wasn't about fitting in desks for everyone, it was about creating a studio culture, pin-up areas, places for informal meetings, places you could take your laptop and work in peace. There were freelancers coming in and out, working on particular projects. All that experience fed into Bureau.' *Photography: Alex Upton*



## The Department Store Studios, London

### Squire & Partners

Set next door to the architecture practice's own, award winning office space, this new addition to Brixton's The Department Store is the brainchild of Squire & Partners. The Studios offers the perfect platform for 'hyperlocal' working and growing businesses. There are individual desks, private studios, serviced social and meeting areas and also a neighbourhood bar, restaurant and screening room on the premises. The design draws on the robust, existing Edwardian structure while adding a contemporary layer with sleek dark metal window frames, landscaped terraces and a Cross Laminated Timber (CLT) structural frame. 'We believe people are tired of conventional offices defined by standard industry benchmarks. The Department Store Studios is a loveable place to work, where people can work 'free range' in a generous space where they are part of a community which supports them to do more than just their jobs,' says Squire & Partners' senior partner Michael Squire. *Photography: Jack Hobhouse*

