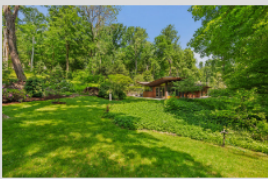


CURRENT

Inside Conran & Partners' tranquil Kings Cross penthouse



From courthouse to hotel: explore the new NoMad London in Covent Garden



'Butterfly' midcentury house in New York lists for \$1.4m



Sou Fujimoto rethinks the 'tower' for the 21st century



Guests can spend the night at Gaudi's Case Vicens this autumn



INTERIORS | BY THE SPACES TEAM

Inside Conran & Partners' tranquil Kings Cross penthouse



Photography: Philip Durrant

1 OF 19

Natural materials including wood and stone take centre-stage inside Conran & Partners' serene penthouse apartment at the [LUMA](#) residential building in King's Cross.

The freshly unveiled 2,200 sq ft apartment occupies the 10th floor of the Squire & Partners-designed building, part of the third and final stage of construction at the central London neighbourhood. Conran & Partners conceived the four-bedroom space as a den of tranquillity, drawing inspiration from the building's parkside setting the mould its modern interiors.



Photography: Philip Durrant

Double-height ceilings in the living room and entertaining space amplify the feeling of lightness honed by the studio's soothing earthy colour palette. A limestone and fluted metal staircase anchor the space, connecting the ground floor to the bedrooms above. Its vertical balustrades cut shafts of light from the windows to create delicate shadow-play across the timber floors and white walls of the London apartment.

Conran & Partners's curation of furniture is similarly delicate: Pierre Jeanneret's rattan-backed kangaroo loungers sit opposite a moss-coloured velvet sofa, with a pebble-like Benoit Viaene coffee table in the middle. It's a dark counterpoint to the monumental limestone island in the kitchen.



Photography: Philip Durrant

Simon Kincaid, partner at Conran & Partners said: 'It was really key to us that the space felt like a home, rather than a show home, scattered with pieces that one might have collected throughout their years.'

A further gem is the apartment's 550 sq ft private roof terrace, which gazes out over architectural gardens designed by Botanical Boys.

Take a closer look.



Photography: Philip Durrant

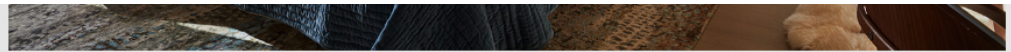


Photography: Philip Durrant



Photography: Philip Durrant





Photography: Philip Durrant

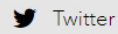
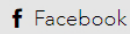


Photography: Philip Durrant

Black concrete and steel chime inside this London warehouse conversion

TAGS: CONRAN & PARTNERS CONRAN AND PARTNERS INTERIOR DESIGN INTERIORS

SHARE THIS STORY

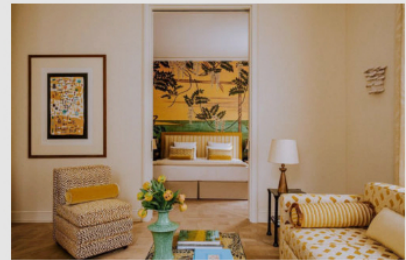


RELATED STORIES



INTERIORS

Interior inspiration to kick-start your week



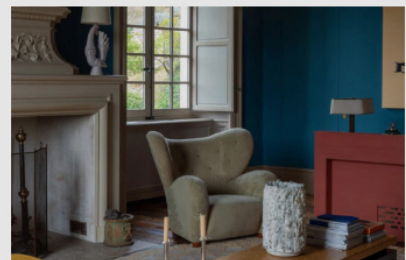
INTERIORS

Interior inspiration to kick-start your week



NEWS, TRAVEL

You can now check in at the Palace of Versailles



INTERIORS

Interior inspiration to kick-start your week