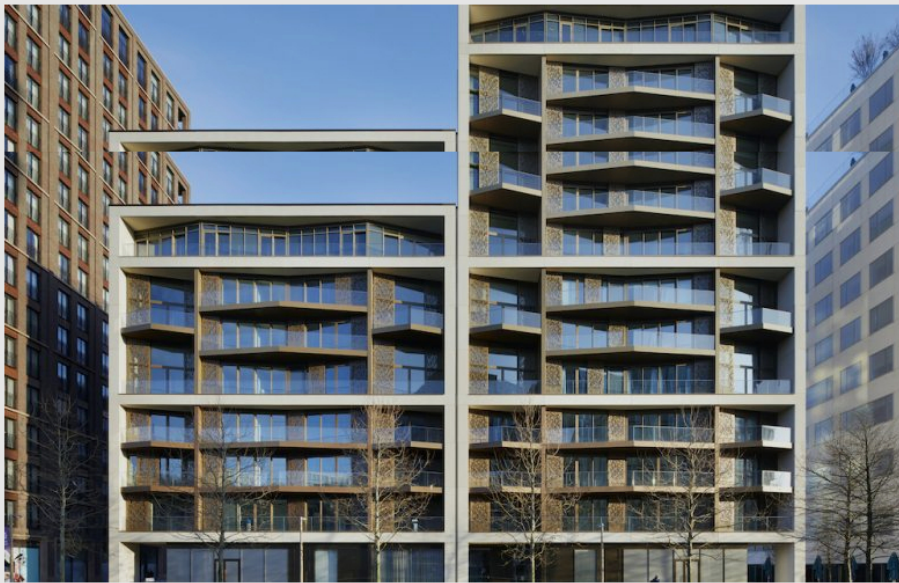


News · 29th Apr 2021

In Pictures: Inside the penultimate piece of Argent's King's Cross development

LUMA, a 61-unit residential scheme designed by Squire & Partners and Conran and Partners, is one of the final pieces of Argent's King's Cross Central Development. Both penthouse apartments are still for sale.



The penultimate chunk of Argent's overhaul of 67 acres around King's Cross in London has officially opened. LUMA is a 61-apartment residential scheme Named for "the centrality of light to its design ethos", the pair of striking new warehouse-style buildings sit between Lewis Cubitt Park to the west and the Jellicoe Gardens to the east. They are flanked by retail and restaurant space, which has been designed to spill out on to walkways bordering the two parks.

Squires says the new blocks "nod to the former industrial character of King's Cross", with warehouse styling and layered facades that feature a pattern "inspired by converging railway tracks". There's also bas-relief aluminium and concrete panels, lattice screens, and a series of bronze coloured splayed bays with geometric balconies.



Share this article:



Add to Favourites

Save to PDF

In this article:

LOCATIONS

LOCATIONS

King's Cross
London
Prime Central London

COMPANIES

Conran and Partners

Squire & Partners

CASE STUDIES

Trending

[MOST READ](#)
[EDITOR'S CHOICE](#)
[LATEST](#)

01

Beauchamp opens up in St John's Wood; plans new global office rollout

Gary Hershman's high-profile agency launches a flagship...

Business & People · 26th Apr 2021

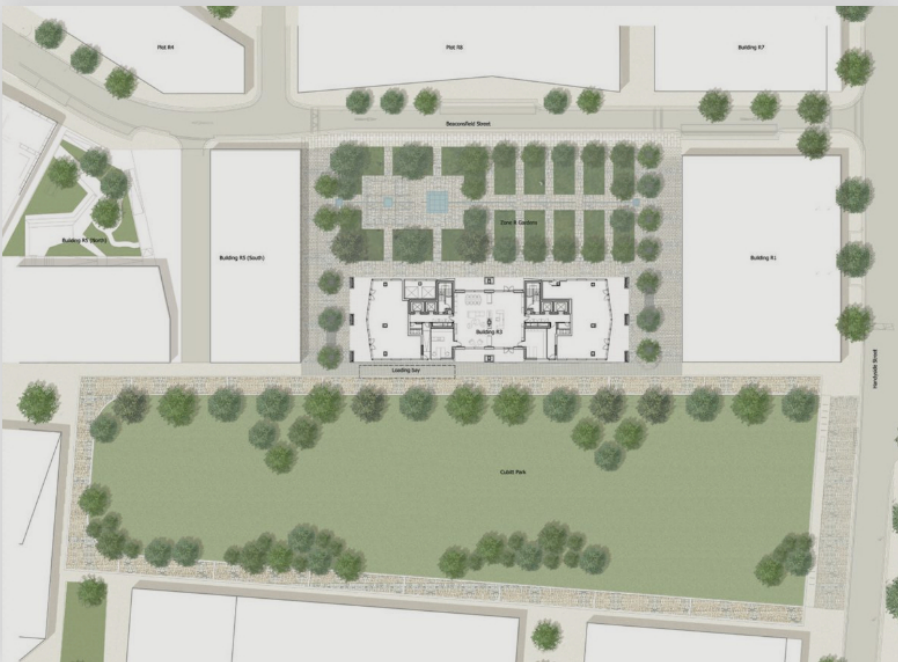
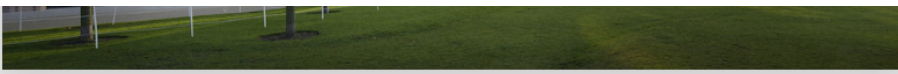
02

US giant Berkshire Hathaway ramps up PCL presence with Knightsbridge agency acquisition

EXCLUSIVE: Warren Buffet's global real estate network...

Business & People · 28th Apr 2021

03



Inside, residents access LUMA via a dual-aspect reception area, which continues the exterior design themes; it features a Venato marble concierge desk, dark wood, light-grey terrazzo flooring with brass inlay pattern, and more lattice screens. A residents' lounge aims for "the atmosphere of a welcoming members club."



Martin's launches boutique scheme on Chelsea's Old Church Street

In Pictures: Development of the original Chelsea...

Properties · 26th Apr 2021

04

Size Matters: How the new Westminster City Plan could change London's super-prime landscape

Essentially the value of big units are going to go up...

Properties · 27th Apr 2021

05

Middleton names new London & country buying heads; launches family office service

Ashley Wilsdon & Ben Horne step up at Mark Parkinson &...

Business & People · 27th Apr 2021



MARKET DASHBOARDS

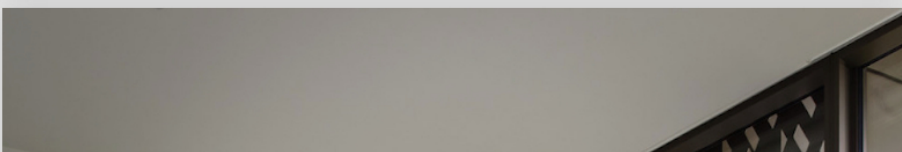




Apartments themselves are a bit brighter, with “deliberately understated” interiors. Units range from studios and one-beds on the first three floors, escalating to duplexes on upper storeys, and two penthouses on the 11th floor. Mid-level apartments boast 1.5-metre ceiling heights, allowing for mezzanine living areas and dual aspect views.

The penthouses spans over 2,200 square feet across three levels. “Dawn” is set up as a three-bed; “Dusk” as a four-bed. They each feature private balconies and rooftop gardens, with views over King’s Cross and beyond.







Both penthouses are still available to buy, priced from £3.29m.

Murray Levinson, Partner at Squire & Partners: “We are delighted to have been appointed by Argent to develop this new boutique residence. LUMA is Squire & Partners’ first building in the King’s Cross Central Development, with a design that knits into the evolving urban setting and references the surrounding historical and natural landscape. The building establishes a strong visual and physical connection between the two gardens with a central glazed residential entrance, and apartment layouts which ensure that all residences enjoy dual aspect views of the parks.”

Simon Kincaid, Partner at Conran and Partners: “Our interior design concept is inspired by King’s Cross as a historic gateway to escape from the city, and celebrates the steam age heritage of the area while offering a serene and escapist setting for residents to unwind at home. We have sought to create a sense of identity and character within the apartments themselves which have been described as having the feel of a collection of bespoke residences, despite there being a total of 61 units.”

Robert Evans, CEO, King’s Cross: “The completion of LUMA represents a real milestone in our King’s Cross journey as we welcome a new wave of residents to our thriving community and into their homes. Testament to LUMA’s distinctive design and situation to green space is LUMA’s popularity to date, and why today we complete with just two apartments remaining for sale. As we continue our vision to create outstanding residences in context to their location across the King’s Cross Estate, we look forward to completing our future schemes.”

In Pictures: LUMA, King’s Cross



Project Team

- Client: Argent LLP
- Architecture: Squire & Partners
- Interior design: Conran and Partners
- Landscape architect: Tom Stuart-Smith
- Structure: Ramboll
- Services: Hoare Lea
- Facade engineer: FMDC
- Quantity surveyor: Gardiner & Theobald
- Photography: Jack Hobhouse

www.kingscross.co.uk

Share this article:



Add to Favourites

Tags:

- In Pictures -

- Property Developer News -

- regeneration -



written by

PrimeResi

The Journal of Luxury Property.

RELATED ARTICLES



Hollywood director's former London...

28th Apr 2021 · PrimeResi Editor

A striking modern mansion in the middle of Primrose...



Size Matters: How the new...

27th Apr 2021 · PrimeResi Editor

When Westminster first unveiled its 20-year...



Beyond Hotels: On the future of..

27th Apr 2021 · Rryan Itani

What does the future of Branded Residential look...



Thameside triplex penthouse pitched...

27th Apr 2021 · PrimeResi Editor

A triplex penthouse in Fulham's Imperial Wharf...



Do you have a news story or tip for PrimeResi?
Click here to tell us all about it!

Contact

For editorial suggestions or queries, please email:

✉ editor@primeresi.com

For subscription enquiries or queries, please email:

✉ subscriptions@primeresi.com

Quick links

[About PrimeResi](#)
[Contact Us](#)
[Latest Articles](#)

[Contributors](#)
[Yearbook](#)

Membership options

[Individual Memberships](#) [Corporate Memberships](#)

