

Working from home?



Don't miss out on your magazines

Subscribe

Search...



M Squire

My Account

Log Out

AJ Architects' Journal

NEWS COMPETITIONS BUILDINGS SPECIFICATION PRACTICE PODCASTS FILM MAGAZINES LIBRARY EVENTS

Architects ↓ Competition wins Opinion AJ Small Projects AJ Retrofit Awards Grenfell Tower RetroFirst Climate change RIBA

AJ Retrofit Awards 2021 shortlist revealed: Workplace

27 JANUARY 2021 . BY FRAN WILLIAMS AND ROB WILSON



14/20 47-69 Notting Hill Gate by Squire & Partners: Shortlisted in Workplaces 2,000m² - 10,000m²

The AJ can reveal more of the finalists among the 83 projects vying for this year's AJ Retrofit Awards. Today it's the three Workplace categories

The shortlisted schemes range in size from under 2,000m² to over 10,000m² and consist of studios, workshops and huge offices. Among them are Moxon's rework of Fraserburgh's civic hub with weathered steel 'saddlebag' and Cassion Castle's retrofit of [Yorkton Workshops in Hackney](#).

Schemes of a larger scale listed include Dept W, a [reworked refurbishment of former department store](#) in Whitechapel by Buckley Gray Yeoman, and [Wellington House in Wimbledon](#) by MATT Architecture, which retains 80 per cent of an existing office block's structural frame.

The shortlist also features projects by BDG architecture and design, Orms, DSDHA and Squire & Partners.

ADVERTISEMENT

Did you know that students get **30% off** AJ subscriptions?

[My round!](#)

The winners will be announced at a virtual awards event on Wednesday 24 February from 4.30 to 6pm. **The event is free to attend – register [here](#).**

Shortlists

Workplace under 2,000m²

Feedback

Tell us what you need

- I can't find what I'm looking for (please specify)
- I want to subscribe
- It's not loading or it's too slow
- I want to unsubscribe from emails
- It's something else (please specify)

[Submit](#)

Workplace under 2,000m²

Sponsored by



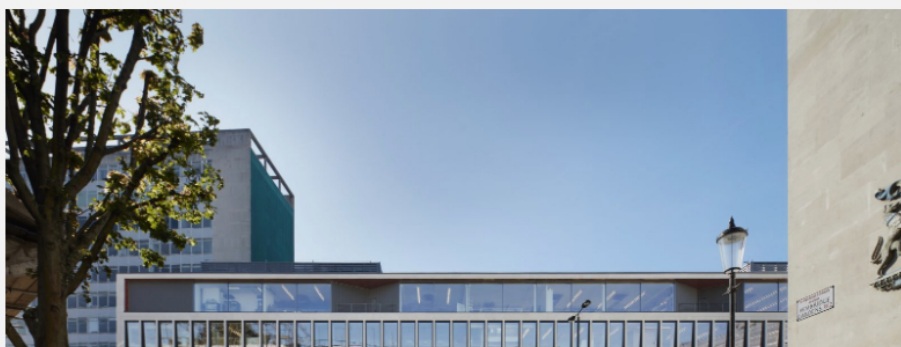
- › **The Studio, Eardley House, Notting Hill, London, by 23 Architecture**
- › **Alva Coachworks, Islington, London, by Ackroyd Lowrie**
- › **Music Agency, Notting Hill, by Beasley Dickson Architects**
- › **Yorkton Workshops, Bethnal Green, London, by Cassion Castle Architects**
- › **Argal Workshop & Creative Studios, Cornwall, by Gluckman Smith Architects**
- › **Faithlie Centre, Fraserburgh, by Moxon Architects**
- › **The Hub, Wyre Forest District Council, Kidderminster, by Sjolander da Cruz Architects**



Faithlie Centre by Moxon Architects: Shortlisted in Workplaces under 2,000m²

Workplace 2,000m² to 10,000m²

- › **Dept W, Whitechapel, London, by Buckley Gray Yeoman**
- › **Hilton House, Manchester, by Buttress**
- › **The Hickman Whitechapel, London, by DSDHA**
- › **Windmill Green, Manchester, by FORE Partnership and tp bennett**
- › **Wellington House, Wimbledon, London, by MATT Architecture**
- › **The Works, Cambridge, by NBBJ**
- › **47-69 Notting Hill Gate, London, by Squire & Partners**

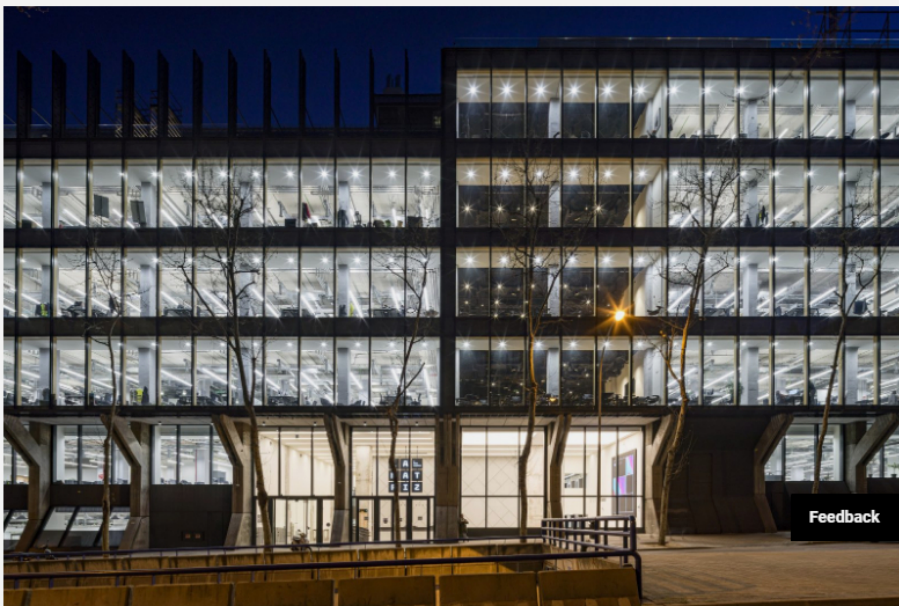




47-69 Notting Hill Gate by Squire & Partners: Shortlisted in Workplaces 2,000m² - 10,000m²

Workplace over 10,000m²

- > WPP La Matriz, Madrid, by BDG architecture and design
- > WPP Amsteldok, Amsterdam, by BDG architecture and design
- > 22 Worple Road, Wimbledon, London, by Buckley Gray Yeoman
- > 77 Coleman, City of London, by Buckley Gray Yeoman
- > 3 Shortlands, Phase 1, Hammersmith, London, by Fletcher Priest Architects
- > 160 Old Street, London, by Orms



WPP La Matriz by BDG architecture and design: Shortlisted in Workplaces over 10,000m²

Register for AJ Retrofit Awards 2021 here, where Retrofit of the Year will also be announced, sponsored by 3M



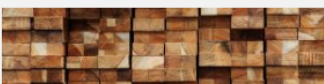
COMMENT AND SHARE



TAGS

[OFFICES](#) [RETROFIT](#) [RETROFIT AWARDS](#) [STUDIOS](#) [WORKPLACE](#)

You might also be interested in...





High demand and shipping delays causing material shortages



CZWG unveils three-towers scheme in London's East End



Architect convicted of domestic violence reprimanded by ARB



Memorial to Manchester Arena bombing victims approved

Most popular

1. Creative workspaces can replace retail and bring new life to urban centres
2. Olympic Park could become 'costly disaster', mayor of London warned
3. Nick Hill architects completes stripped-back garden house in west London
4. Architects rebel after being made to work in office
5. Weston Williamson unveils design for HS2 viaducts
6. Lynch bags approval for contest-winning Hackney council housing
7. Fletcher Priest wins approval for 32-storey Walkie Talkie neighbour
8. NBBJ gets the go-ahead for £200m Oxford lab on site of Leslie Martin block
9. RIBA and RIAS make bids for lead competency role
10. St John's saviour: DLA completes Hackney housing

Leave a comment

Logged in as M Squire. [Log out?](#)

POST

Please remember that the submission of any material is governed by our [Terms and Conditions](#) and by submitting material you confirm your agreement to these Terms and Conditions. Links may be included in your comments but HTML is not permitted.



[CONTACT US](#)

[FAQS](#)

[ARCHIVE](#)

[WHY SUBSCRIBE](#)

[TIP US OFF](#)

[TERMS AND CONDITIONS](#)

[ADVERTISE WITH US](#)

[SPONSORED CONTENT](#)

[PRIVACY POLICY](#)

COPYRIGHT © 2021 EMAP PUBLISHING LIMITED