

VOGUE
РОССИИ
ЛЕКЦИИВаш
идеальный
гардероб

Community Center next to the Mill 1816 in London

The architects' task was to build a community center
next to the city's last operating mill.

ARCHITECTURE 12 OCTOBER 2020

EKATERINA KARPUKHINA

In the south of London, in the Brixton area, the only working mill in the city of 1816 has been preserved. In 1960, a park was laid out around it, and recently they decided to use it for its intended purpose.



AD



Где найти
**СВОЕГО
ДИЗАЙНЕРА?**

ARCHITECTURE

INTERIOR

DEVELOPMENTS

CULTURE



The charity FoWG offers guided tours, festivals and workshops, and produces Brixton mill flour, which is used by local bakeries and restaurants, but also plans to run its own bakeries.



All these events are held by the organizers in order to raise funds for maintaining the mill. Therefore, a new community center was needed for their activities, the project of which was helped by the architects Squire & Partners.



The bureau has built a modest, elongated one-story building that does not compete with the old mill. The design of the building was inspired by the historical buildings that stood on this site until the 1960s. The frame is made of Douglas fir, and the gable roof is made of Staffordshire blue engineered bricks, reminiscent of a pitch-black painted windmill tower.



In addition, a series of double glazed doors offer views of the gardens and windmill. Sliding panels with vertical slats let light into the center space and provide safety when the building is empty.





Photo: Jack Hobhouse

ARCHITECTURE

LONDON

GREAT BRITAIN

PUBLIC SPACES

GOSSIP COLUMN



Inspiration - in your mail

The most interesting of the world of design and architecture

✉ your@post.ru →

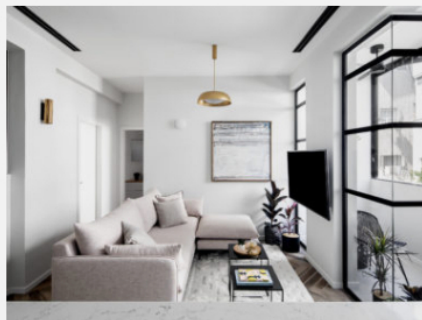
☐ I agree to the [privacy policy](#), [the policy of processing of personal data](#) and the receipt of advertising

READ ALSO



Colorful hotel between two train stations in Paris

INTERIOR

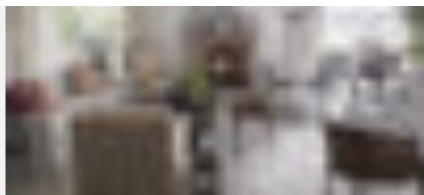


Apartment in Tel Aviv, 60 m²

INTERIOR

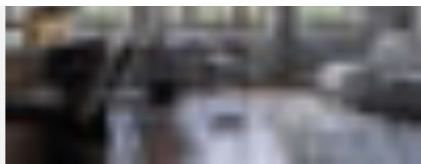
музеи на руинах
императорской печи
в Цзиндэчжэне

АРХИТЕКТУРА
1 ЧАС НАЗАД



Home in mixed style in Miami,
1347 m²

INTERIOR



Monochrome apartment in
Moscow, 150 m²

INTERIOR

Музей на руинах императорской печи kiln in Jingdezhen

Studio Zhu-Pei Architects have built a museum complex dedicated to the ancient porcelain craft in the historic district of Jingdezhen.

READ MATERIAL



Magazine subscription

Every month a fresh issue of the magazine at your home



Digital version of the magazine

Read all issues of AD magazine on your tablet or
smartphone



AD in your mail

All the latest news and personal mailings from the editorial
office in your mail every week