

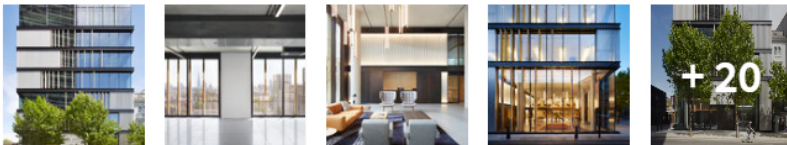
Search ArchDaily

ArchDaily > Projects > Office Buildings > United Kingdom > Rolling Stock Yard Offices / Squire & Partners

Rolling Stock Yard Offices / Squire & Partners



Save this project



Curated by Paula Pintos

OFFICE BUILDINGS · LONDON, UNITED KINGDOM

Architects: Squire & Partners

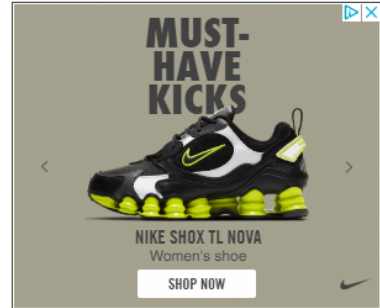
Area: 8154 m²

Year: 2020

Photographs: Jack Hobhouse

Manufacturers: Bentley, Schüco, Colorminium, Diapo, Sphere 8

MORE SPECS



MORE FROM SQUIRE & PARTNERS »



Brixton Windmill Education & Community Center / Squire & Partners



Agriculture Technology Centre, Cambodia / Squire & Partners + SAWA



The Frames / Squire & Partners

More from Squire & Partners »

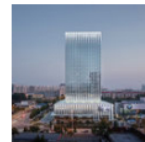
MORE OFFICE BUILDINGS



Delis Yokohama / Kengo Kuma and Associates



One World Place / Gensler



Vista-Folding Tower / Doarchi

More Office Buildings »

MOST VISITED



Recommended Products

GLASS



Dip-Tech
Digital Ceramic
Printing in Art &...

FIBER CEMENTS / CE...



Ductal®
Ductal® Cladding
Panels (EU)

FIBER CEMENTS / CE...



EQUITONE
Fiber Cement Facade
Panel Natura

FIBER CEMENTS / CE...



Swisspearl
Swisspearl Largo
Fiber Cement Panels

Text description provided by the architects. Rolling Stock Yard is a new development in King's Cross designed as a contemporary response to its industrial setting providing 57,500 sq ft of workspace for creative small to medium-sized businesses. The design concept draws on the area north of King's Cross St Pancras, historically characterised by the machinations of transport, freight, and industry, and now an emerging creative quarter. Converging railway lines and shipping containers are referenced in the nine-storey building, expressed as a series of stacked elements with a black profiled steel structure emulating parallel railway tracks running horizontally across the facades. Within this horizontal grid, full-height glazing is softened by a layer of vertical solid oak sleepers and sinusoidal perforated metal screens to offer privacy and shade during daylight hours, and emit a diffused glow at night. At pavement level, the building animates the street with bespoke illuminated entrance signage behind a corrugated metal screen, and a double-height office entrance addressing York Way.



Internally an industrial palette of exposed concrete, blackened steel, and perforated aluminium is balanced by a pair of timber-lined recesses for the reception and café. Unifying the space is a pale grey poured resin floor with inlaid track patterns which define routes from the entrance to the reception, lifts, and café. For building users and guests, the Rolling Stock Café within the main entrance offers raised seating at high tables with access to power and data, and additional space on a mezzanine level with more informal and lounge seating. The two levels are connected by a folding metal stair, behind which a large-scale commissioned painting by celebrated London artist Barry Reigate provides a playful backdrop. Combining cartoon imagery and graffiti with geometric shapes and cultural references to King's Cross, the site-specific work projects a dynamic urban attitude.



The Life and Death of the
Tiny Home Trend

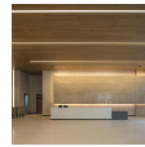


Public Spaces and Urban
Areas: 12 Squares Viewed
from Above



Two Sheds / DREAMER +
Roger Nelson

MOST VISITED PRODUCTS



Wood - Veneered Wood
Topline® Ceiling & Wall
Panels|Hunter Douglas
Architectural (Europe)



Free Form Structures for
Wood Projects|Blumer
Lehmann



Motorisation for
Windows|Vitrocsa

SET OF 6
£8

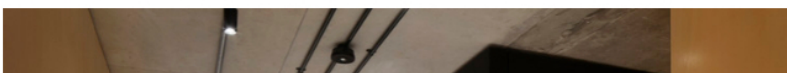
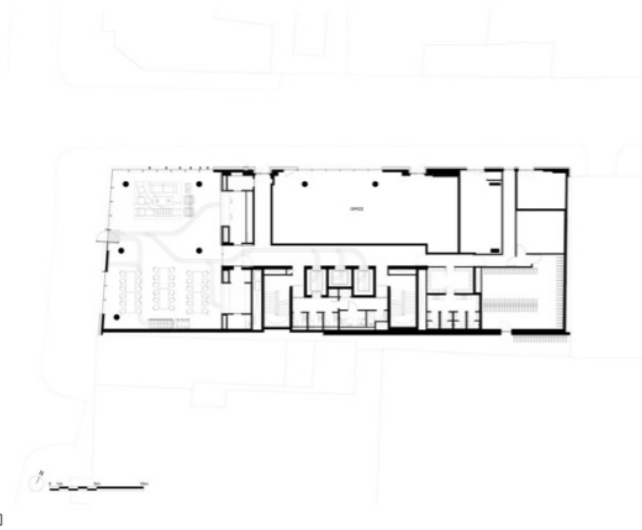
The House by John
Lewis glassware range

Shop Now >

JOHN
LEWIS
& PARTNERS



The work is presented as an architectural element within the space, drawing on the local built environment and encouraging people to move around the space to discover different aspects of the painting. Office spaces benefit from natural light on three sides - all four on the upper level - and every floor has openable windows to allow for natural cross ventilation. Exposed concrete ceilings continue the industrial aesthetic, with suspended lighting tracks directing light up and down. Circulation on each level is marked with a backlit perforated metal screen, leading to the lift lobby and toilets. A 140sqm private roof terrace with planters and feature linear floor lighting is created on the upper level, offering views across the skyline. WC's are designed as superloos, self-contained cubicles that include a black Corian worktop and splashback, sink, large mirror and vertical feature lights.





The back wall of each cubicle is lined with panels of natural ply featuring an engraved pattern depicting freight containers. 300sqm of roof space has been planted with wildflowers and grasses chosen to support local populations of birds, bees, and butterflies. On top of this planted bed are 120 solar panels, with a further 80 panels on the south façade, providing the building with a sustainable energy source. Capable of responding to the needs of growing companies, the building is presented as an adaptable collection of working spaces offering units ranging in size from 150 to 680sqm.

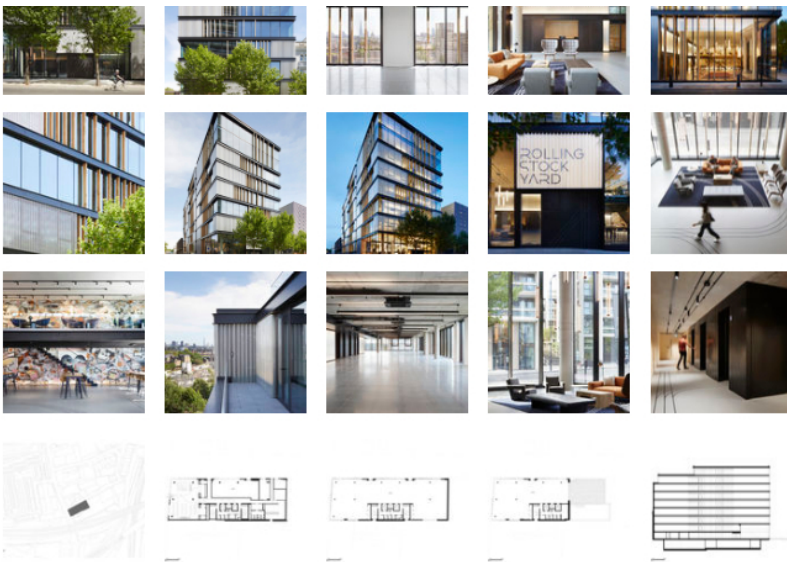


Rolling Stock Yard tenants have access to generous cycle storage, showers, lockers, and a reception café and breakout space. Branding and wayfinding were conceived as an evolution of the architecture and interiors concept, by Squire & Partners' in-house branding agency Mammal. Referencing the railways and freight industry of King's Cross, Mammal established a palette of rust orange, blue, and white with a graphic identity based on parallel and converging lines.



Project gallery





Project location

Address: Kings Cross, London, United Kingdom



Location to be used only as a reference. It could indicate city/country but not exact address.

About this office

Squire & Partners

Office

[FOLLOW](#)

#TAGS

[Projects](#)

[Built Projects](#)

[Selected Projects](#)

[Offices](#)

[Office Buildings](#)

[England](#)

[London](#)

[On Facebook](#)

[United Kingdom](#)

Published on September 18, 2020

Cite: "Rolling Stock Yard Offices / Squire & Partners" 18 Sep 2020. ArchDaily. Accessed 21 Sep 2020.
 <<https://www.archdaily.com/947860/rolling-stock-yard-offices-squire-and-partners>> ISSN 0719-8884

BROWSE THE CATALOG

METALLICS



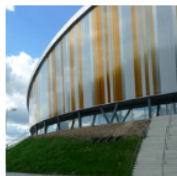
HAVER & BOECKER

TENSILE STRUCTURES



FabriTec Structures

ENCLOSURES / DOUB...



Rodeca

COMMUNICATIONS



2N