



Interwoven Histories

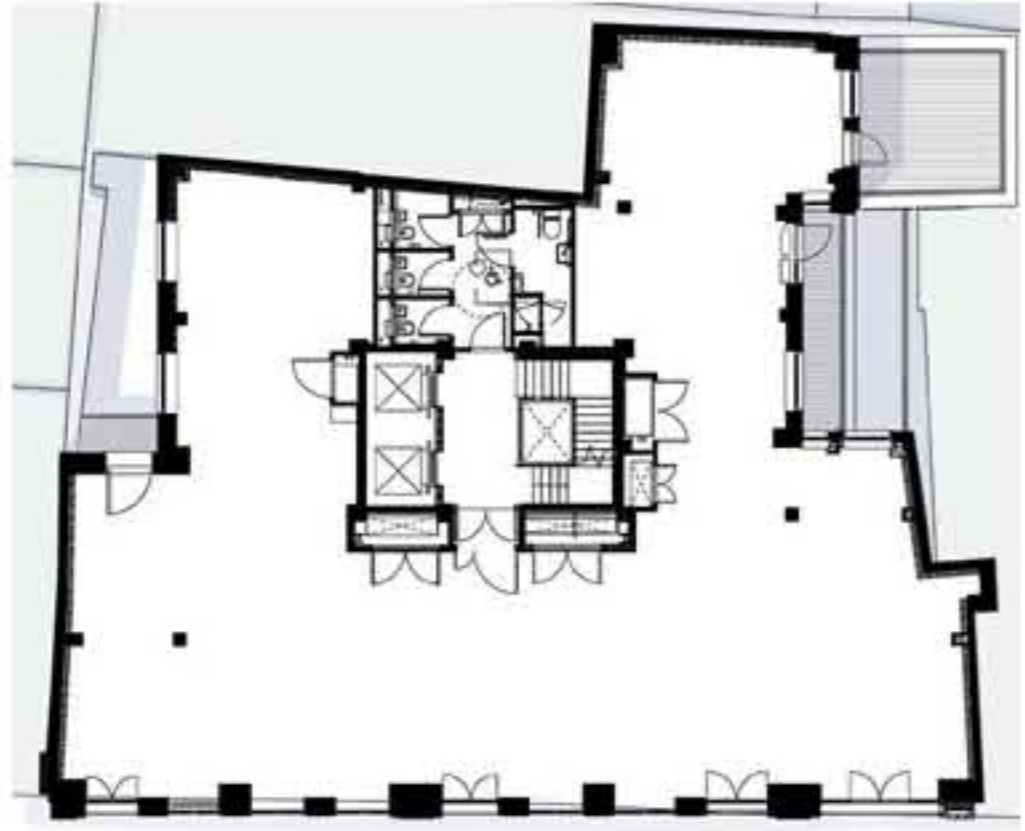
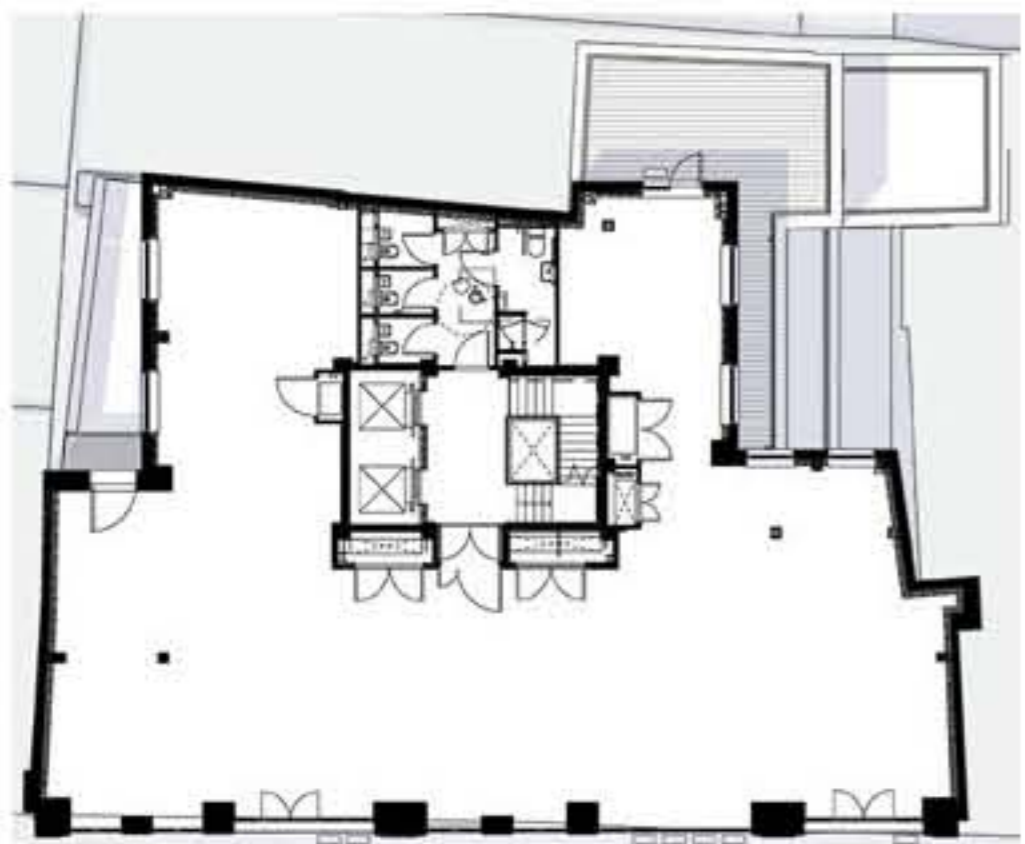
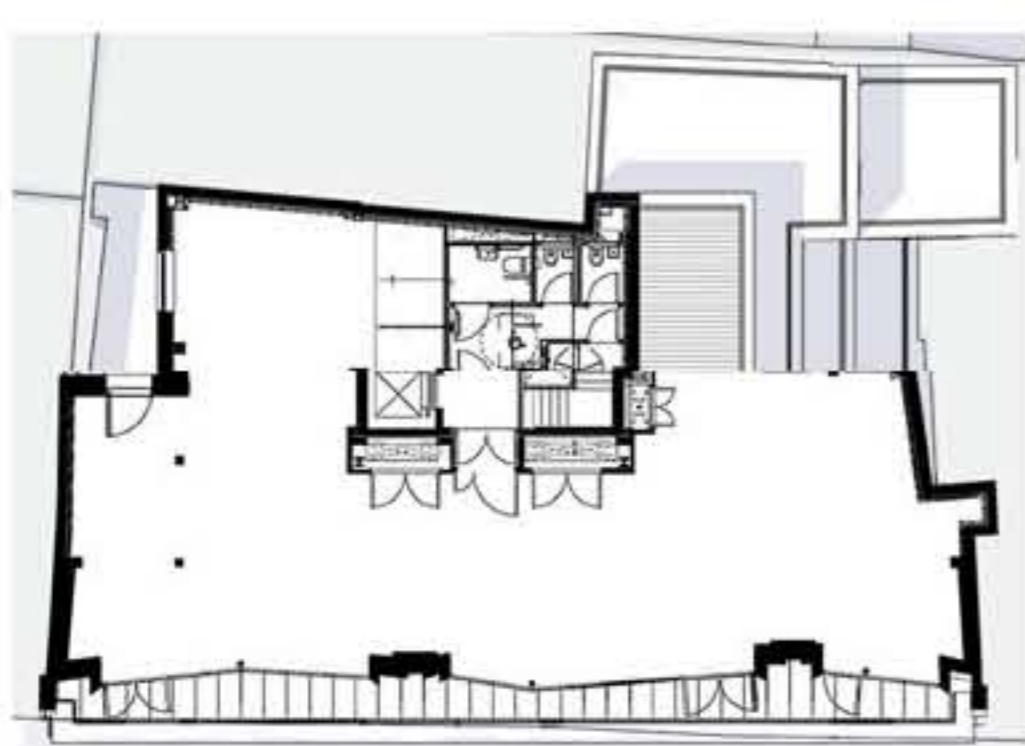
Squire & Partners draws on local history to rework a 1980s commercial building in London's West End



Photos
Gareth Gardner



"We explored the complete site history, starting with its origins as home to master fabric weaver Holland & Sherry, through the abstract and rebellious spirit of local resident Francis Bacon, to the post-modern facade applied to the building shell in the 1980s", explains project architect and partner Tim Gledstone.



Basement, ground, first, third and fourth-floor plans

The development comprises offices and retail space, with a new metal-clad top floor. Expressed as an irregular folded mansard, the rooftop structure is intended to evoke Soho's history of rebellion and creativity.



On the ground floor, a series of full-height glazed bays and a canopied entrance signal the retail units and office reception respectively. The facade is expressed as a brick frame interspersed with stone spandrels and vertical bands of 'woven' green tiles. The latter pay tribute to the site's textile past.

Additional Images



Credits

- Architect
Squire & Partners
- Structural engineer
Heyne Tillett Steel
- Services engineer
MTT
- Client
The Royal London Mutual Insurance Society

Explore More

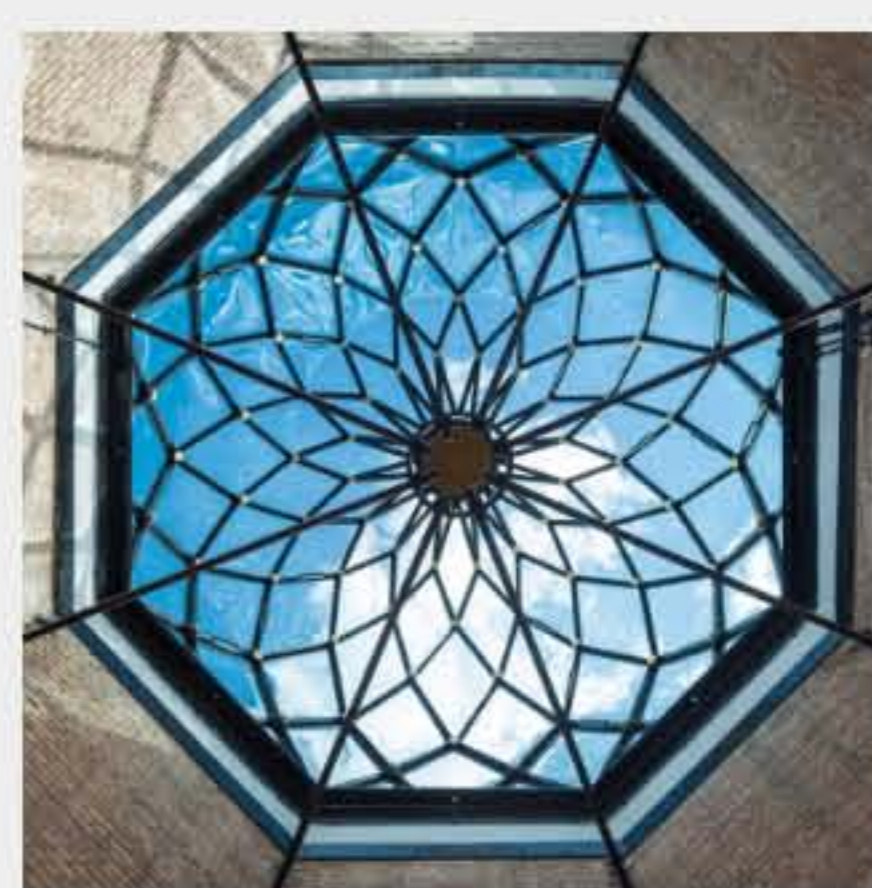
Exhibitions



Lost London: picturing the city's vanished landmarks and landscapes



2018 RIBA Awards



Shortlisted projects and award winners

2018 Wood Awards



Winners of the 2017 Wood Awards: Alison Brooks Architects' Smile, Simpson & Brown's Rievaulx Abbey, and Mark Laban's Rustic Stool

[Click here to enter the 2018 Wood Awards](#)

Architecture Today April 2018



[VIEW THE DIGITAL EDITION](#)

Specification Today April 2018



[VIEW THE DIGITAL EDITION](#)