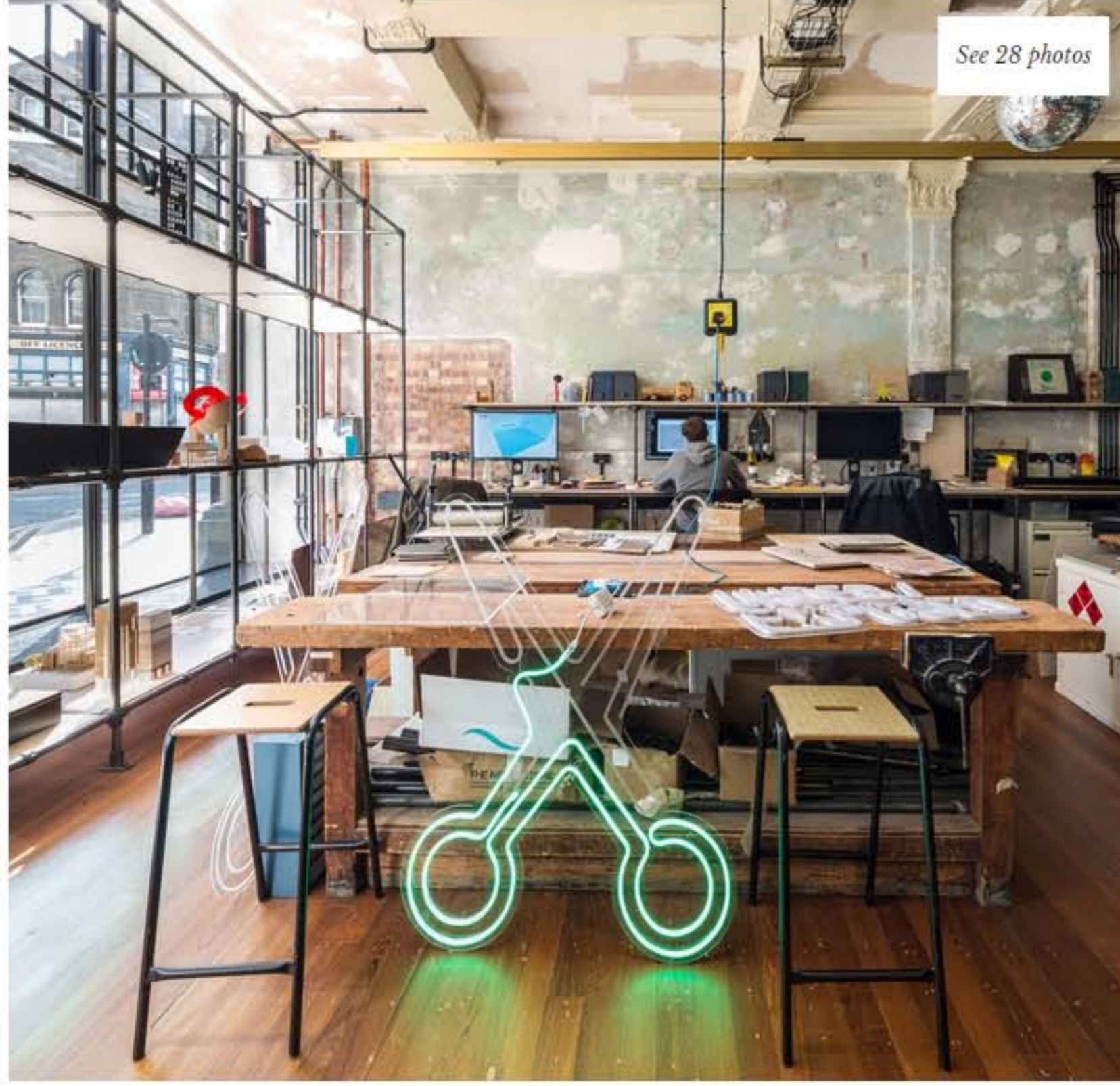


< ADOPTIVE SONS

A STUDY WITH HARMONY >



See 28 photos

f

28

t

DECOR



**TEST: Are you an authentic MANIATIC of decoration?**

If people tell you that you are a decorator, but you do not think it's that good, solve your doubts with this test. In your answers is the solution. Oh, and if you are, we are with you.

Follow us on Facebook



**TEST: Are you an authentic MANIATIC of decoration?**

If people tell you that you are a decorator, but you do not think it's that good, solve your doubts with this test. In your answers is the solution. Oh, and if you are, we are with you.

Follow us on Facebook



**TEST: Are you an authentic MANIATIC of decoration?**

If people tell you that you are a decorator, but you do not think it's that good, solve your doubts with this test. In your answers is the solution. Oh, and if you are, we are with you.

Follow us on Facebook



## The second life of some GREAT WAREHOUSES

The first department store in London, an imposing 1,500-square-meter Edwardian building, regains all its splendor as the headquarters of the architecture studio 'Squire & Partners.'

BY CRISTINA GIMENEZ JAMES JONES PICTURES

Reading: 2 minutes

06-11-2017

The new headquarters of the London architecture studio **Squire & Partners** is one of those offices where everyone has to work; and happy employees, you know, happy projects. Not in vain are more than 200 that make up the firm. Berlin, Cairo, Dubai, Bogota, Kranj or Rwanda are just some of the places where their residential, urban and luxury real estate projects are rolling out. One of his latest works, the *Lexicon Building* on City Road, has become one of the new icons on the London skyline.

See 28 pictures **NEW HEADQUARTERS**

Its newly opened studio, of approximately 1,500 square meters, has different work spaces and several meeting rooms and areas for events that also make available to the local community.



When *Squire & Partners* found the building it was very damaged. He had been abandoned and occupied by different urban tribes for years. The surprise was discovering that under layers and layers of graffiti, stuccoes and plaster ceilings, some historical elements were still preserved that recalled their distinguished past, some storehouses of the Edwardian era, *Bon Marché*.

They opened their doors in 1877, in the Brixton neighborhood, south of the Thames, and took their name and aesthetics from the famous French warehouses. They were the first in the United Kingdom and also the first steel structure building in the country.

The first commitment of the architects and interior designers of the *Squire & Partners* team was to clean the building of the terrible interventions suffered throughout its history in order to return it to its original state. For this, they worked in collaboration with artisans and furniture manufacturers in the search for a balance between a current design and decaying greatness. On the outside, the designs focused on reversing years of abandonment and reactivating the level of the street using the shop windows originals as part of the exhibition space. For this, the layers of paint added over the years were eliminated, discovering the original, the stone, marble and terracotta of the facade.

On the ground floor, a striking reception area welcomes visitors upon arrival. Also on this floor is the model shop and two stores: one dedicated to *vintage vinyl* and a coffee roaster. The work spaces are on the first and second floor, characterized by open spaces with individual work positions supported by a series of meeting areas for the sharing of work groups. On the top floor, there is the canteen. With these wickers, it is most likely that, at this point, your work request mailbox is overflowing.

0 comentarios

Ordenar por

Añade un comentario...

Plugin de comentarios de Facebook

### YOU MAY ALSO LIKE



A STUDY with harmony



ADOPTIVE Sons



I want to DIE here



This will be the first SUBMARINE restaurant in Europe



This architect is going to change NEW YORK



The man from the SOUTH



**TEST: Are you an authentic MANIATIC of decoration?**

If people tell you that you are a decorator, but you do not think it's that good, solve your doubts with this test. In your answers is the solution. Oh, and if you are, we are with you.

Follow us on Facebook



## The best...



Descárgate GUÍA AD IPHONE



Suscríbete a la revista 25% DE DESCUENTO



Revista Digital DESCARGA