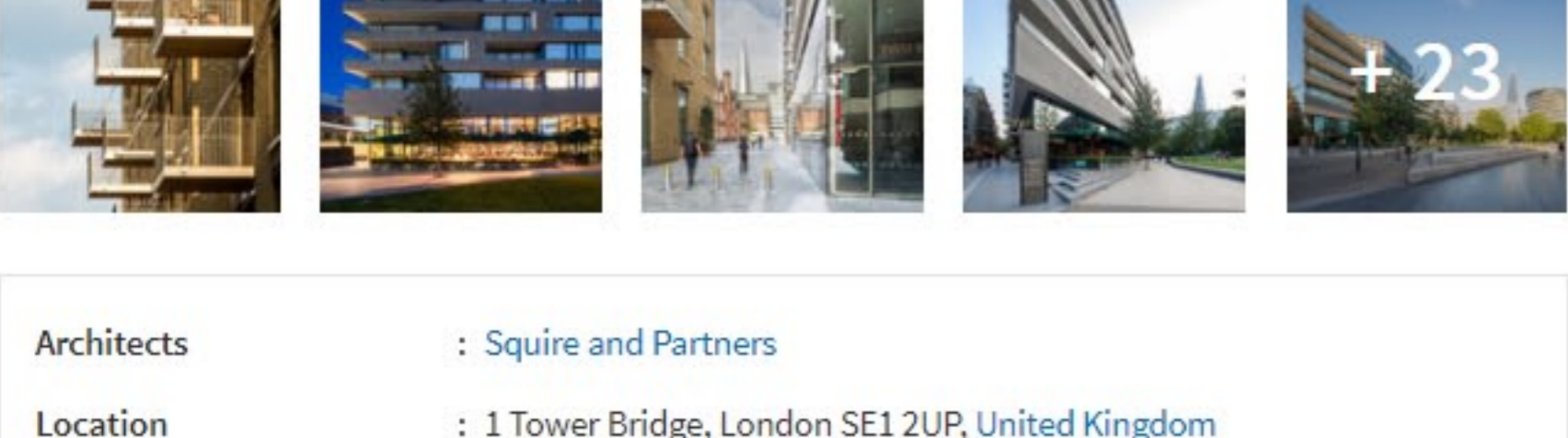
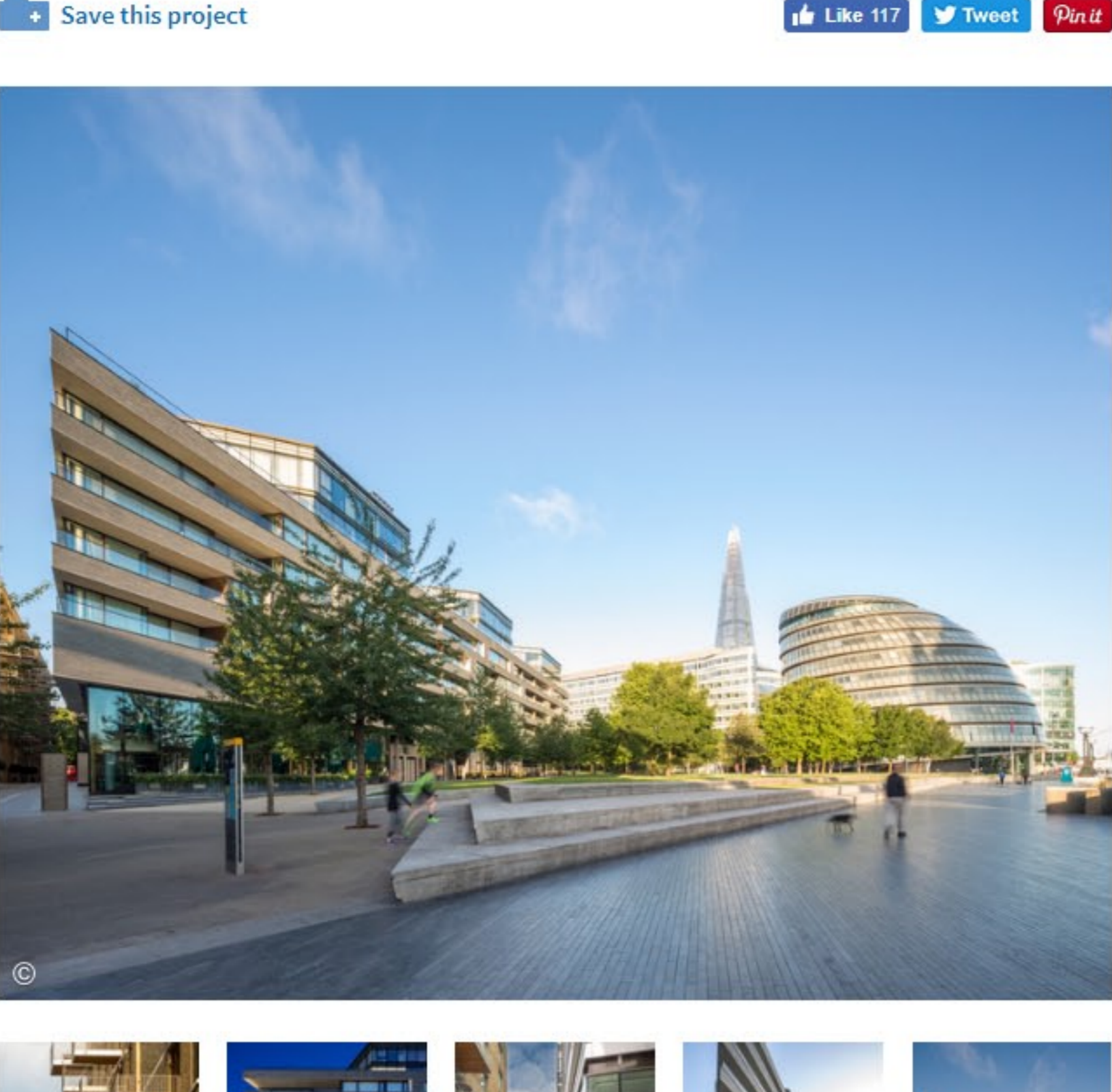


One Tower Bridge / Squire and Partners

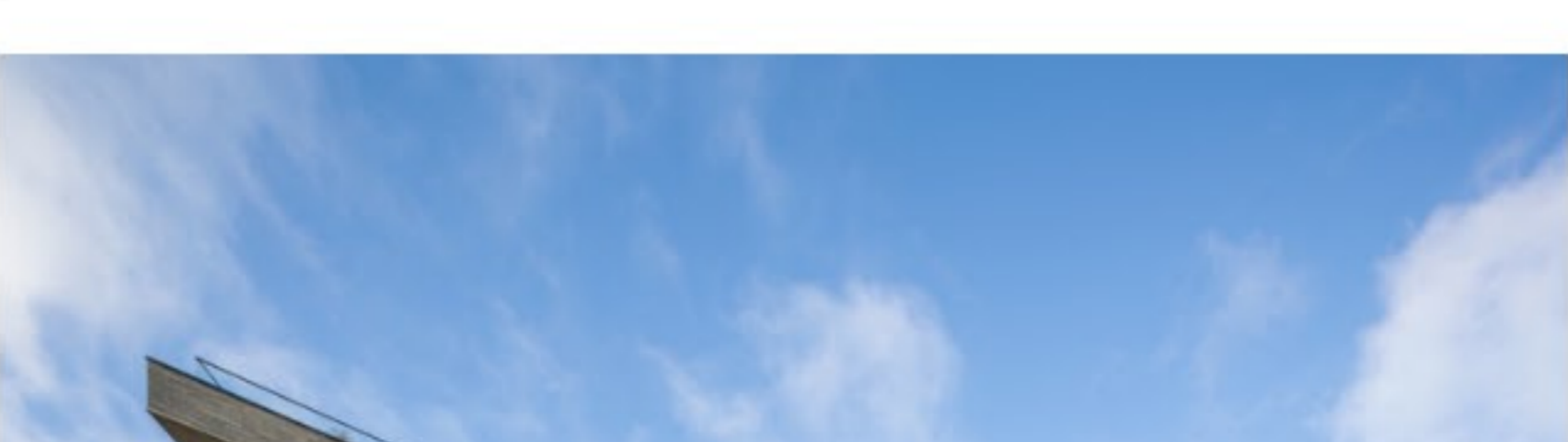
03:00 - 14 September, 2017

Save this project

Like 117 Tweet Pin it



Architects : Squire and Partners
Location : 1 Tower Bridge, London SE1 2UP, United Kingdom
Area : 68000.0 m2
Project Year : 2017
Photographs : James Jones



From the architect: Squire and Partners' masterplan for One Tower Bridge on London's South Bank is fully realised this month with the opening of The Ivy restaurant and the launch of the Bridge Theatre for the London Theatre Company.



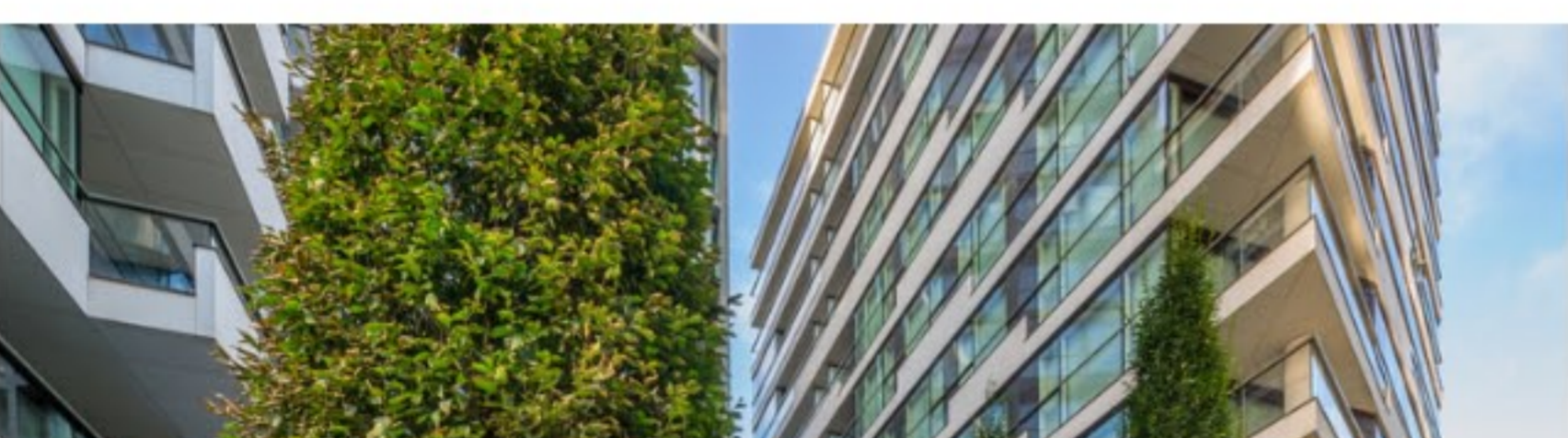
The plan was conceived as a lasting new piece of the city which articulates the transition between More London's contemporary architecture and the warehouse vernacular of Shad Thames, and respects its prominent riverside location on Potters Fields Park adjacent to the Grade I listed Tower Bridge.



Designs identified hotel and residential accommodation supported by significant cultural, leisure, restaurant and retail uses, as well as new landscaped public spaces at the centre of the development and pedestrian connections which visually and physically link Tower Bridge with Tooley Street.



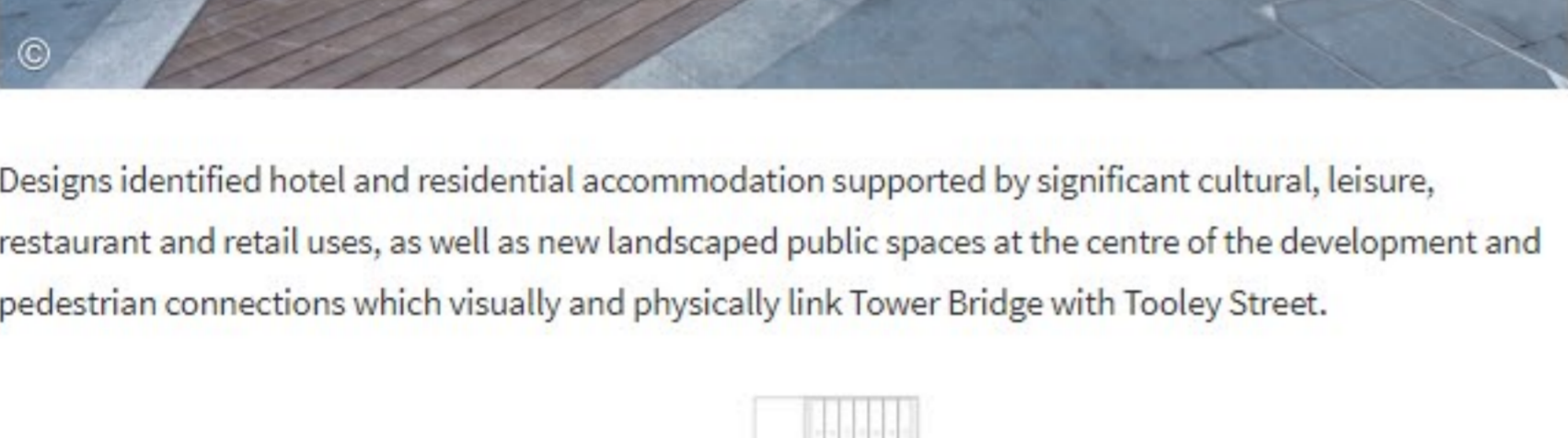
Defining the edge of Potters Fields Park is Cambridge House, a low horizontal building clad in strips of Catalan Gris limestone, with a double height ground floor accessing the 6,870m2 cultural space for the London Theatre Company.



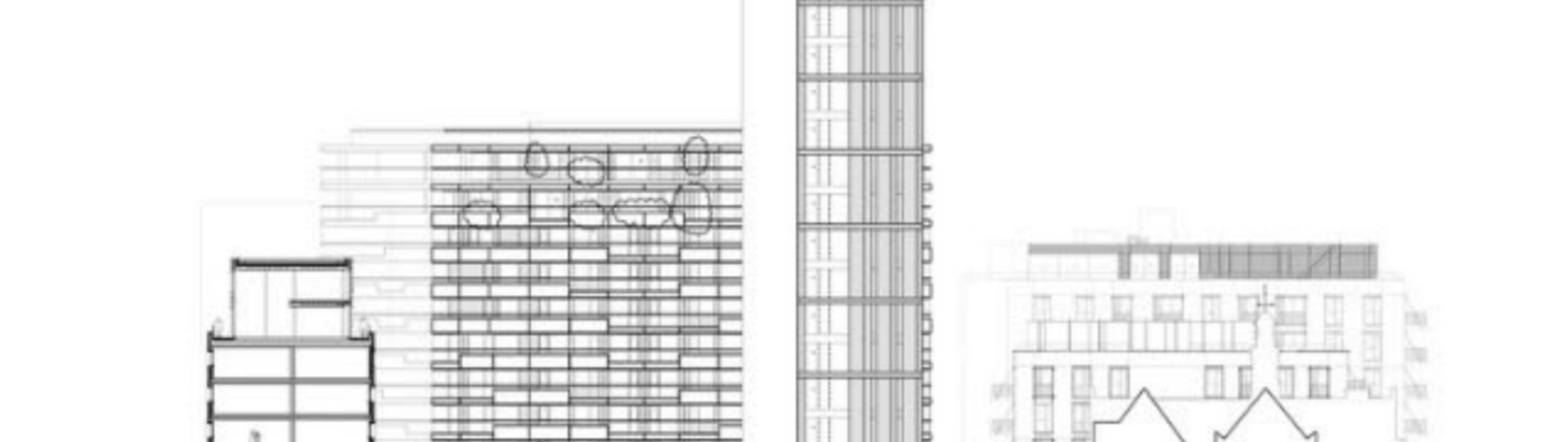
Sharing the same palette and set within a central landscaped courtyard is The Tower, a 20 storey slender 'campanile' offering one apartment per floor, topped by a glazed garden terrace. The Catalan Gris stone is offset with finely detailed bronze anodised windows and chamfered recesses.



Three apartment blocks with projecting stone balconies are positioned between landscaped gardens at the centre of the development. Two further buildings step down in scale towards Tower Bridge Road, constructed from London stock brick to relate to the adjacent Shad Thames. Interest is added with handset basketweave brickwork and a series of projecting timber balconies.



A new pedestrian route, Duchess Walk, has been created to maximise views through the site from Tooley Street to the south tower of Tower Bridge. This street is animated by shops, cafes as well as a spa and gymnasium.



Save this project Like 117 Tweet Pin it

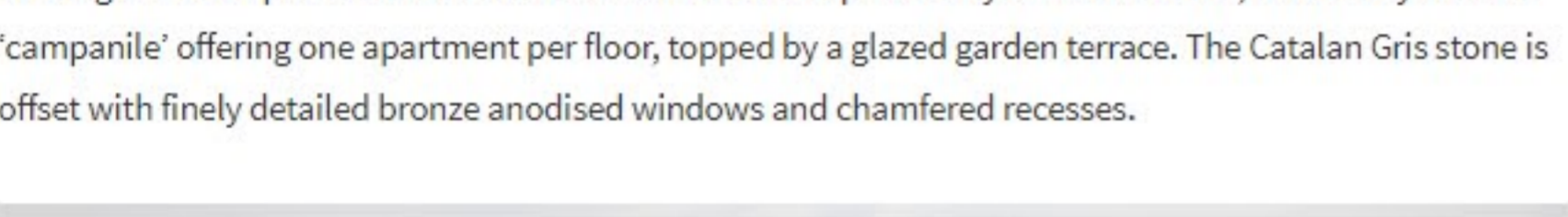
Products: Concrete Brick

See more: Projects Built Projects Selected Projects Hospitality Architecture Hotels Cultural Architecture Theaters & Performance theater Greater London United Kingdom

Cite: "One Tower Bridge / Squire and Partners" 14 Sep 2017. ArchDaily. Accessed 25 Sep 2017. <http://www.archdaily.com/879478/one-tower-bridge-squire-and-partners/>



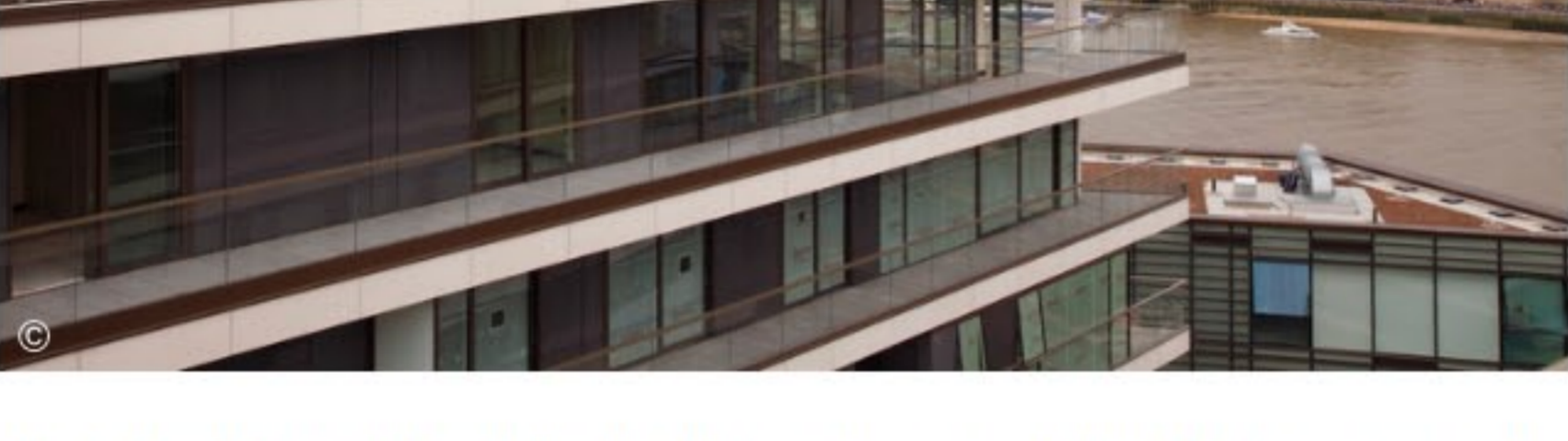
BROWSE THE CATALOG



Tiles - Mosa Scenes Mosa
Porcelain Tiles - MaxFine Marmi Collection FMG
Sunscreen - Fabrik® Shildan



Porcelain Tiles - HQ. Resin Maximum Collection Flandre
Wall Panels ALUCOBOND® naturAL Alucobond
Facade panel Natura EQUITONE



Receive ArchDaily updates via email!

Register and start receiving our content daily in your email.

SIGN ME UP