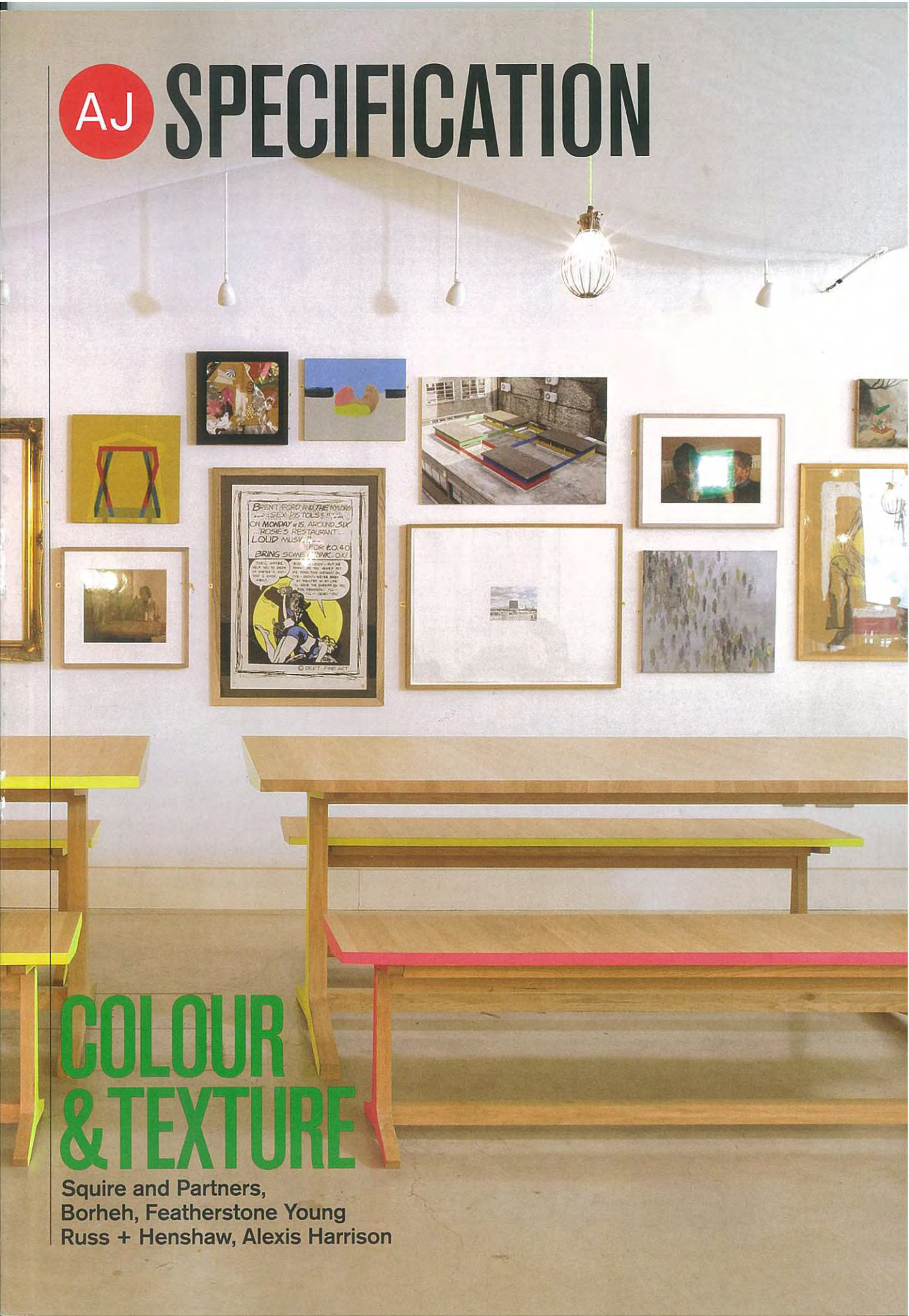




# SPECIFICATION



## COLOUR & TEXTURE

Squire and Partners,  
Borheh, Featherstone Young  
Russ + Henshaw, Alexis Harrison

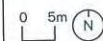
# 10 HANOVER STREET, LONDON W1

## SQUIRE AND PARTNERS

Right View from north-west, with balconied flats to left of offices

Photography by James Balston and Gareth Gardner

Location plan



This new, slender residential building by Squire and Partners features full-height, bespoke perforated shutters. The building forms part of a mixed-use development, which also provides a new office building as well as the Hus Gallery for contemporary art.

From 1800 to 1930 Hanover Street was the home of military tailoring, which influenced the design and detail of the building. A chevron motif used to perforate the facade is abstracted from military insignia and combined with traditional military colours.

The shutters are a contemporary reference to the traditional timber shutters that were used in Mayfair residences to provide privacy as well as light modulation. Spanning the width of the building, they form a dynamic frontage to the street and assist with environmental control.

When closed, the bronze shutters allow light to permeate through, displaying the chevron pattern and, when open, they reveal flashes of red lining and gold trim. *Tim Gledstone, partner, Squire and Partners*

### Project data

Start on site June 2012

Completion October 2013

Net internal area Residential: 535m<sup>2</sup>,  
Gallery: 127m<sup>2</sup>

Procurement Design and build

Total cost for residential and gallery  
£3.25 million

Construction cost per m<sup>2</sup> (residential) £2,950

Architect Squire and Partners

Client Morgan Capital Partners

Structural engineer Waterman Group

Quantity surveyor WT Partnership

Services MTT Consultants

Sustainability consultant MTT Sustain

Main contractor Mace

CAD software used MicroStation

Estimated annual CO<sub>2</sub> emissions for residential/gallery building 86.71kg/m<sup>2</sup>



### Specified products

#### Precast balconies

Loveld

Bespoke, acid etched Dolomite white precast concrete. Regency Gold anodised aluminium trim  
[www.loveld.com](http://www.loveld.com)

#### Bespoke glass balustrade to north facade

Astec Projects

Cantilevered laminated toughened glass. Regency Gold anodised aluminium capping trim  
[www.astecprojects.co.uk](http://www.astecprojects.co.uk)

#### Folding sliding shutters to north facade

Astec Projects

Floors 1-5: Frames and mechanisms of Schüco ASS 70 FD aluminium bi-folding door system wrapped in perforated aluminium skin. Floor 6: as above with bespoke steel sub-frame wrapped in perforated aluminium skin. External face: 3mm perforated, Dark Bronze (Anolok 549) anodised aluminium panel. Internal face: 3mm perforated Crimson Red (RAL 3003) PPC aluminium panel. Trim: 3mm Regency Gold 2 anodised aluminium  
[www.astecprojects.co.uk](http://www.astecprojects.co.uk)

#### Rainscreen cladding

VM Zinc UK

[www.v zinc.co.uk](http://www.v zinc.co.uk)

#### Stone cladding

Albion Stone

Jordans Whitbed

[www.albionstone.com](http://www.albionstone.com)

#### Internal glass panels

Fusion Glass Designs

Back-painted glass

[www.fusionglass.co.uk](http://www.fusionglass.co.uk)

#### Kitchen splashback panels

Chelsea Artisans, Diamond Decor 8

[www.chelsea-artisans.co.uk](http://www.chelsea-artisans.co.uk)

#### Internal tiling

Domus

Sand-blasted reconstituted stone Quartzite range

[www.domustiles.co.uk](http://www.domustiles.co.uk)

#### Timber veneers

F R Shadbolt & Sons

Black walnut, crown cut, book-matched vein

[www.shadbolt.co.uk](http://www.shadbolt.co.uk)



1. Office entrance
2. Office
3. Residential entrance
4. WC
5. Office waste and recycle store
6. Reception
7. Retail
8. Lift lobby
9. Bathroom
10. Kitchen
11. Living/dining room
12. En-suite bathroom
13. Bedroom
14. Light well
15. Balcony

Below left View across the dining and living area to the sliding shutters beyond **Below** Timber staircase **Next page** Red inner face of shutters in typical flat

The shutters are a contemporary reference to the traditional shutters used in Mayfair residences

Ground floor plan

Third floor plan



JAMES BALSTON



Grange St. Pauls Hotel - London      University of Edinburgh - Edinburgh      Prinsenhof - The Hague (Netherlands)

Loveld is a leading cladding contractor in the market of Architectural concrete, stone and brick clad precast. We design, supply and erect customised cladding for offices, hotels and residential projects in Europe. We invite you to contact our sales staff in order to find out more about our possibilities and what we can offer for your project.

Loveld NV  
Brug Zuid 12  
9880 Aalter  
Belgium

T. +32 9 374 65 48  
F. +32 9 374 05 32  
secretar@loveld.com  
www.loveld.com

ARCHITECTURE IN CONCRETE  
AND NATURAL STONE

## HIGH QUALITY WINDOWS AND DOORS

SCANDINAVIAN DESIGN SINCE 1954

**0,79**  
W/m<sup>2</sup>K  
U-VALUE  
EU-SIZE

**+24,4**  
W/m<sup>2</sup>K  
WER

**85**  
YEARS  
LIFE  
EXPECTANCY

BEST PERFORMANCE FOR ALDUS WINDOWS

Project: J3, Bristol  
Architects: gcp Chartered Architects  
Client: Knightsbridge Housing Association  
Contractor: Leadbitter Construction SW

Find out more by visiting our website and experiencing our wide range of products.  
[www.rationel.co.uk](http://www.rationel.co.uk)



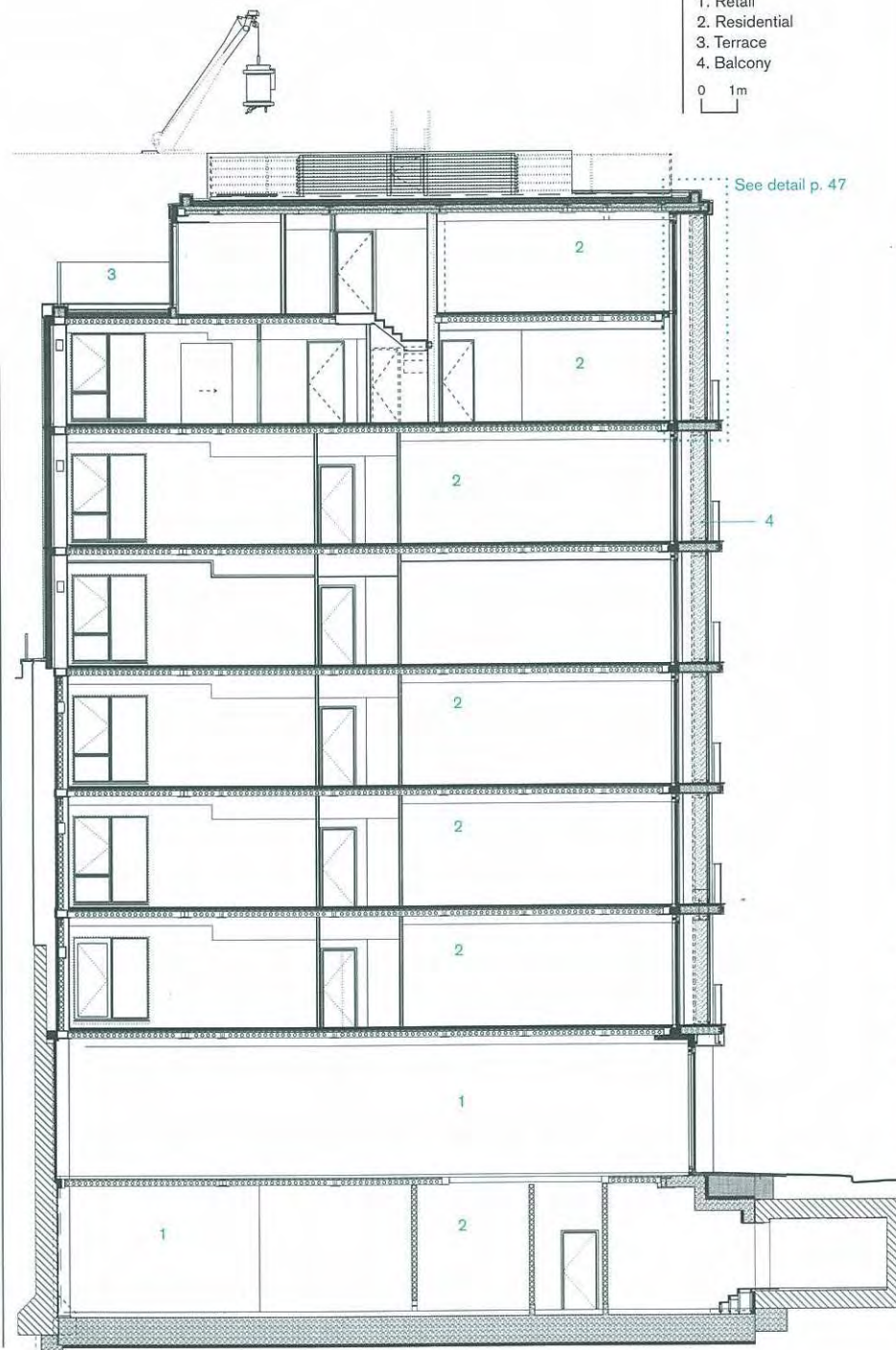
Section A-A

Right North  
facade of flats

- 1. Retail
- 2. Residential
- 3. Terrace
- 4. Balcony

0 1m

See detail p. 47



GARETH GARDNER

Spanning the width of the building, the shutters form a dynamic frontage to the street and assist with environmental control

# The keys to the city... yours for one night only



Maggie's Culture Crawl, Friday 19 September 2014

Come with us as we head out walking into the night discovering cultural, architectural and artistic delights, raising as much as we can to support people with cancer and their family and friends.

[www.maggiescentres.org/culturecrawl](http://www.maggiescentres.org/culturecrawl)

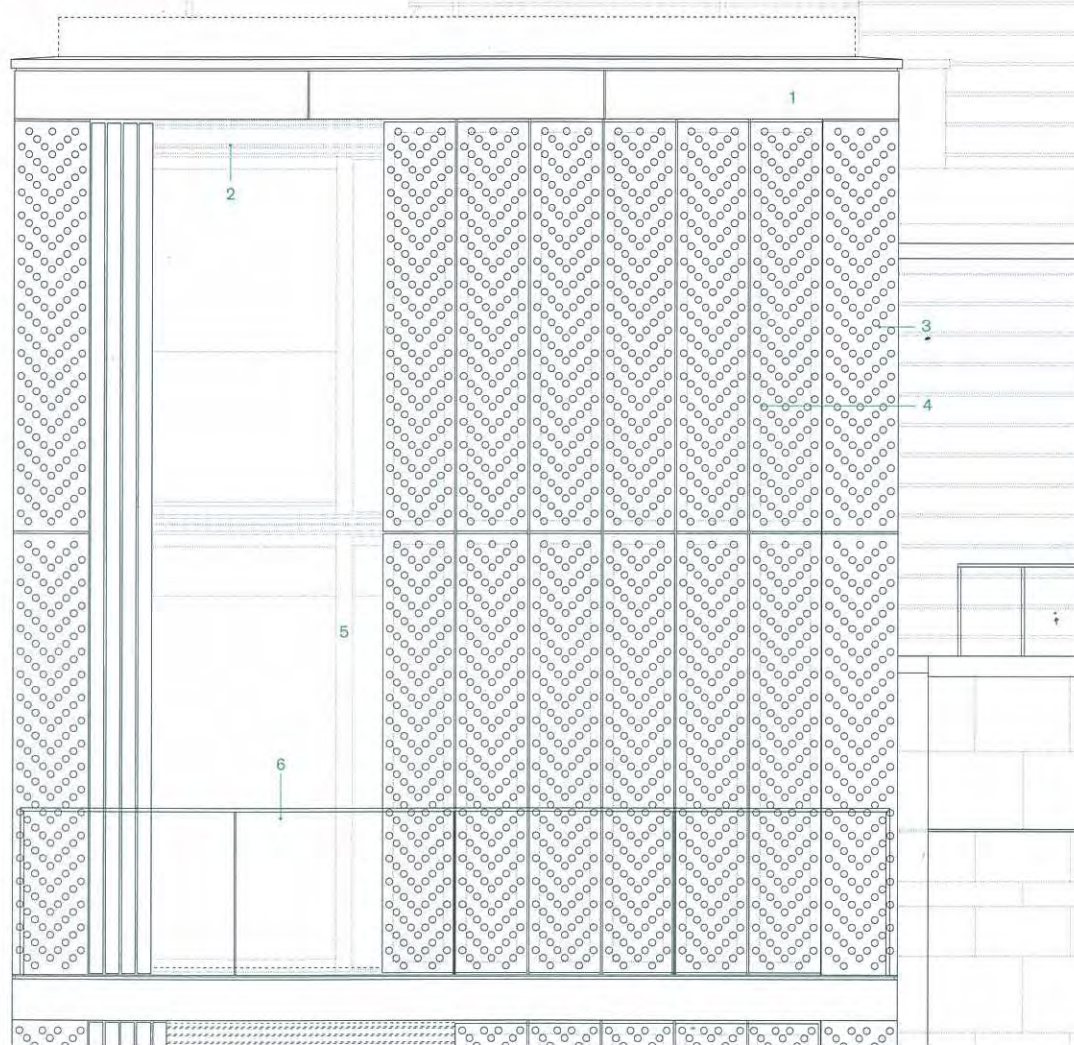
Sponsored by  
**DELANCEY**

In partnership with  
**Open City** | **Open House London 2014**

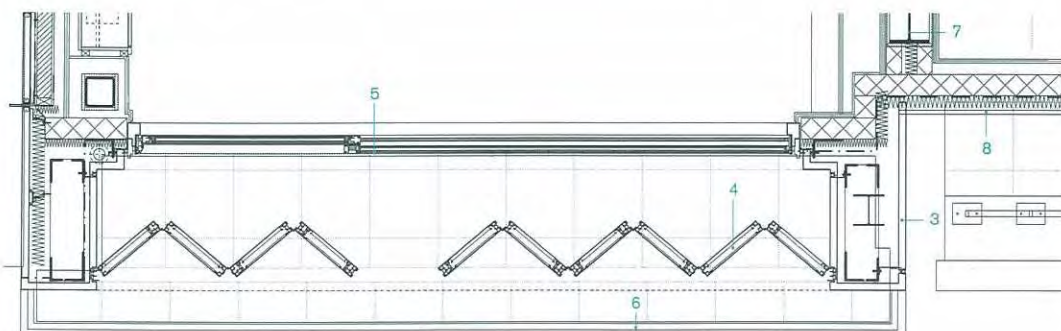
*maggie's*  
People with cancer need places like these



Residential front elevation



Sixth floor residential balcony



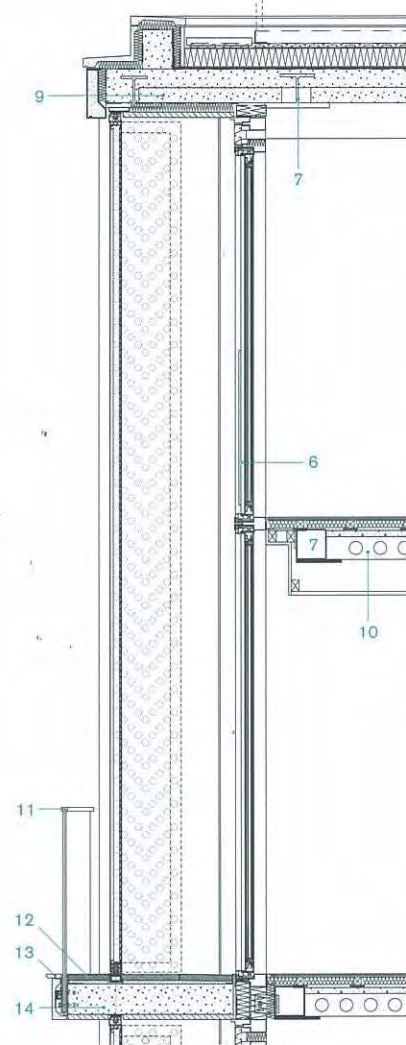
Plan

1. Precast Dolomite white concrete coping
2. Anodised aluminium architectural louvre Anolok 549
3. Double-skin aluminium rainscreen cladding outer skin - perforated 3mm anodised aluminium panel, Anolok 549; inner skin - 3mm PPC aluminium panel RAL 3003
4. Folding sliding screens with steel sub-frame clad in perforated aluminium panels
5. Anodised aluminium double-glazed sliding door and unit - Anolok 549
6. Glazed balustrade with anodised aluminium cap - Anolok 549
7. Steel frame
8. Zinc interlocking panel cladding
9. Precast concrete plank with structural concrete topping
10. Precast concrete plank with structural screed topping
11. Anodised aluminium balustrade cap - Regency Gold 3
12. Creme Julia granite paving to balcony
13. Anodised aluminium balcony edge trim - Regency Gold 3
14. Precast Dolomite white concrete balcony

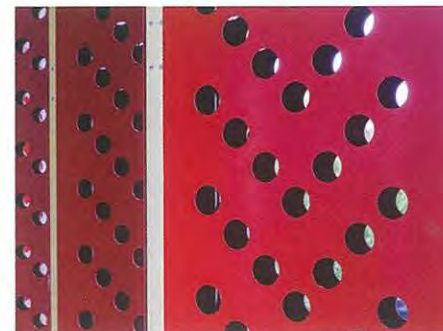
0 0.5m

Right and far right The chevron configuration of the shutter perforation is abstracted from military insignia and combined with traditional military colours

Residential balcony



Section



GARETH GARDNER



# SAMPLES BOARD

## 01. External screen doors, residential sliding folding screens to residential facade

Schüco doors were chosen. The folding shutters were a challenge, especially at penthouse level where they are double height. The screens create a visual barrier for the apartments, giving easy control of light and privacy for occupants

[www.schueco.co.uk](http://www.schueco.co.uk)

## 02. Screen ironmongery

The Schüco ironmongery, with satin stainless-steel finish, is expressed rather than hidden – just as buckles and buttons are on military uniforms

## 03. Rainscreen cladding

In Quartz Zinc Grey, the rooftop screens simply and discreetly conceal the rooftop plant.

[www.vnzinc.co.uk](http://www.vnzinc.co.uk)

## 04. Aluminium cladding trim

The anodised aluminium trims in Regency Gold 2 finish are a direct reference to military uniforms and have varying grades of brush and polishing

[www.unitedanodisers.com](http://www.unitedanodisers.com)

## 05. Aluminium cladding

The LHT Unicol Anolok Dark Bronze (Anolok 549) cladding from United Anodisers was selected as a local material reference to Regent Street, but also enhances the historical reds and flashes of metal.

The lasercut chevron patterns refer to tailored herringbone fabrics

## 06. Stone cladding

The Jordans Whitbed albian stone cladding was

The material samples selected relate to the concept design and are a combination of rich colours and textures. The challenge for the material palette was to be crafted, innovative and vibrant – in line with the building concept. Referencing the military tailoring that is historically present on the site, we set up a palette to include reds and blacks, together with flashes of polished metal.

*Tim Gledstone, partner, Squire and Partners*

chosen as a complementary material for walls and gives solidity to the clean, modern interior

[www.albionstone.com](http://www.albionstone.com)

## 07. Internal glass panels

The back-painted glass panels in the lift and lobby areas are warm and welcoming. The SFC11 Wine colour reflects ceremonial military jackets and complements the timber panelling's darker tones

[www.fusionglass.co.uk](http://www.fusionglass.co.uk)

## 08. Internal glass panels

The Diamond Decor 8 kitchen splashback panels, in Ultra White, were sharp and modern to complement the white kitchen units

[www.chelsea-artisans.co.uk](http://www.chelsea-artisans.co.uk)

## 09. Internal tiling

These reconstituted stone tiles in DTS CQ 706 grey, from the Quarzite range, were selected for their quality and robust sandblasted finish.

[www.domustiles.co.uk](http://www.domustiles.co.uk)

## 10. Stone tiling

The black and white veined marble in these Nero Marquina marble tiles gives a dramatic character to the bathrooms

[www.putneyandwood.co.uk](http://www.putneyandwood.co.uk)

## 11. Timber veneer

The American black walnut, crown-cut timber panels with book-matched vein were stained to give a strong, dark, contrasting feel to the light, modern interior

[www.shadbolt.co.uk](http://www.shadbolt.co.uk)

STALE ERIKSEN