

SUBSCRIBE TO **lighting** TODAYAJ **Subscribe.**

Search the site

Search >>

[Home](#) | [News](#) | [Buildings](#) | [Comment](#) | [Planning & Regs](#) | [Sustainability](#) | [CPD](#) | [Specification](#) | [Culture](#) | [Students](#)
[Regional news](#) | [First Look](#) | [Daily News](#) | [International](#) | [Astragal](#) | [New Practices](#) | [MIPIM](#)

Home > News

Squires wins go-ahead for UK's tallest residential tower

19 July, 2013 | By [Tom Ravenscroft](#)

Squire and Partners' proposed 75-storey Docklands tower, billed as the UK's tallest residential skyscraper, has won planning permission



The scheme in London's docklands, at the western end of South West India Dock, features a 239-metre-high residential tower which will contain 752 private flats and 70 shared-ownership apartments.

The *City Pride* skyscraper, which replaced an earlier [63-storey proposal by Foster and Partners](#), takes its name from a now-closed pub that currently occupies the site.

The tower will overtake [Broadway Malyan's 50-storey One St George Wharf tower, in Vauxhall](#) as the UK's tallest residential tower - although it would still be shorter than the country's tallest building, Renzo Piano's recently completed 95-storey Shard at London Bridge.

'Designed as a clean rectilinear form to create a coherent marker for the termination of the dock' the skyscraper joins a group of consented tall buildings in the immediate area, including Rogers Stirk Harbour + Partners' proposed trio of towers at Heron Quays West and the practice's [on-again-off-again Riverside South](#)



Most popular

- > [Architects sought for new Dublin children's hospital](#)
- > [KNAUF INSULATION wraps up Marks & Spencer in Cheshire Oaks](#)
- > [AJ readers poll: Who do you want to win the Stirling Prize?](#)
- > [AJ Writing prize: call for entries](#)
- > [RMJM chief 'appalled' by RIBA support for employee action](#)

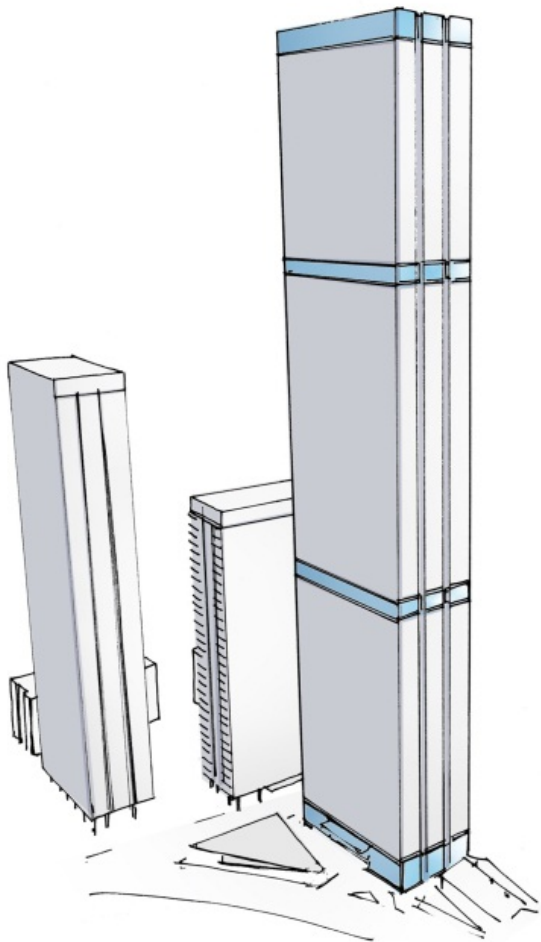
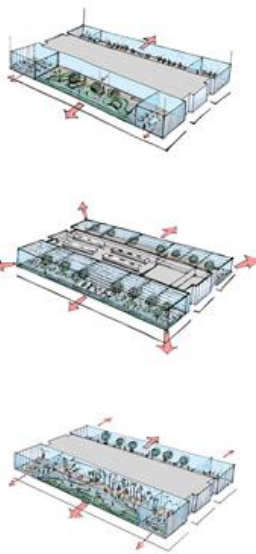
RELATED JOBS

- > [Senior Design Manager - New Build Residential - London / Essex Border](#)
£60k - £70k + car allowance + package
- > [Part III Residential](#)
£19-£21 per hour
- > [Revit Technician High End Residential Interior Designer](#)
£140-£190 per day
- > [Senior Project Manager - Residential Sector, London](#)
Excellent package
- > [Senior Project Manager - Residential / Mixed Use Sector,](#)

[scheme](#).

The communal 27th and 56th floors of the *City Pride* tower will contain dining spaces, a landscaped children's play area, an indoor 'relaxation area', gym and study rooms. Two roof top landscaped terraces run the full length of the building, protected from the wind by double height glazed walls.

As part of the development a cafe and indoor play space, with a publically accessible roof garden, will be built in a separate single storey building located on the dockside.



Related Articles

- ▶ Vauxhall helicopter crash: doubts raised over tall buildings policy
17 January 2013

- ▶ Broadway Malyan's 'secret' tower
15 November 2001

- ▶ Squire proposes UK's tallest residential tower
4 January 2013

- ▶ UK's tallest residential tower stumbles at first hurdle
17 June 2013

- ▶ 2003: the shape of things to come
9 January 2003

Tower Hamlett also granted Squire & Partners approval for another Docklands scheme the low-rise 173-home 'Island Point' development on a brownfield site on Westferry Road.

Have your say

Please remember that the submission of any material is governed by our [Terms and Conditions](#) and by submitting material you confirm your agreement to these Terms and Conditions. Links may be included in your comments but HTML is not permitted.

Comment



London

£60,000 - £70,000

▶ **"Great Opportunity" Mid/ Senior Level Designer - High End Residential - London - £NEG**

£NEG

[Find more jobs »](#)



Buildings Library

The searchable digital buildings archive with drawings from more than 1,500 projects

▶ **Access over 100 years of projects**

