

WHAT WE'RE SPECIFYING SQUIRE AND PARTNERS

From co-working spaces in Shoreditch to townhouses in Clapham, we are finding an emerging movement towards the personalisation of space within both commercial and residential projects, which extends into one of the most personal of spaces: the bathroom.

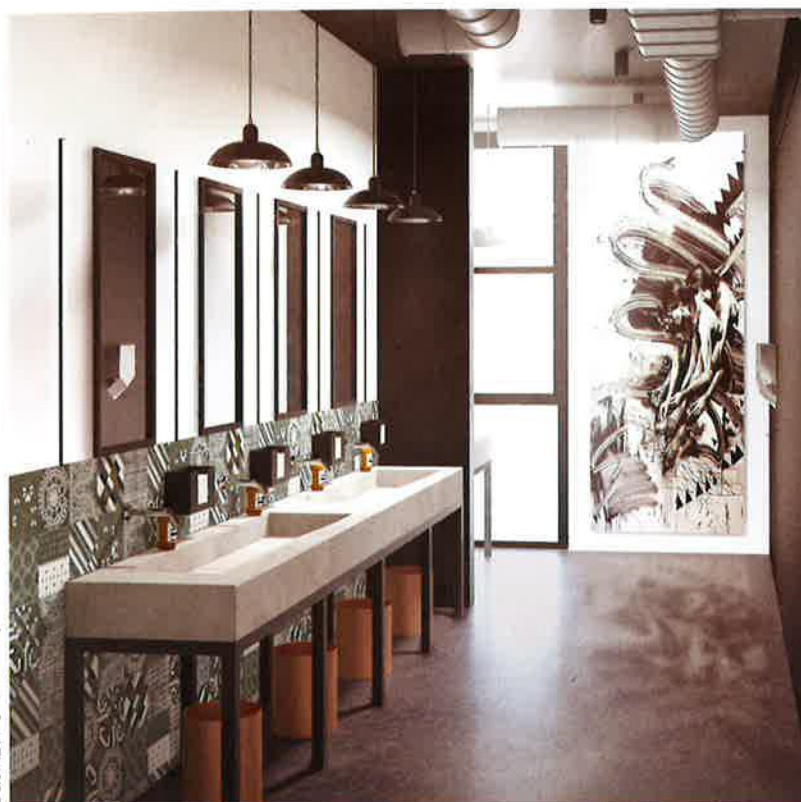
At Squire and Partners we are taking this opportunity to introduce an element of craftsmanship and rigorous attention to detail that hasn't been seen in the sleek and uniform bathrooms specified in projects over recent years.

In the residential sector, we are designing bathrooms that create opportunities for the resident to add their own layers of personalisation. At Macaulay Road, a private family home in Clapham, south London, the layout allows space for items such as Moroccan rugs and antique chests of drawers, collected by the family over the years.

Elements such as the sinks and countertops, previously a focus of the room, now provide an understated background, including the classic Dornbracht Tara wall-mounted taps, Corian countertops in Glacier White by CP Hart, and the simple combination of the Laufen Pro S Washbasin with



SQUIRE AND PARTNERS



JAMES BALSTON



GARETH GARDNER

Crosswater mixer, which allows personal items to sing.

In terms of materials, by understanding the needs and habits of the user we can be bolder with the finishes we specify. At Macaulay Road, instead of tiles we used polished plaster by Franco Polished Plaster in wet areas, as we knew our client would naturally open windows for ventilation and so the plaster would dry out easily. We also used American black walnut engineered flooring by Silvan, a material normally found in living areas.

Wherever possible we like to use or create a pattern and motif that is relevant for the spaces we design. We use these patterns in tiling and in screens to add personality and ornamentation to the bathrooms. At Macaulay Road we reused the client's freestanding timber screens to the windows, both to provide privacy and add a layer of materiality and interest to the room. We also varied the range of scale in tiling by introducing larger-format Domus Cubo pattern tiles with a Trama pattern infill contrasted with an intricate mother-of-pearl mosaic tile splashback by Domus (Mother of Pearl Collection), creating depth and enhancing the intimacy of these areas.

In larger residential developments such as St Edmund's Terrace, a collection of 36 new apartments in Primrose Hill, north London, we have used luxury finishes such as Statuario marble and green onyx strategically and sparingly rather than cladding the entire room, highlighting the material as a special element as well as reducing cost and waste. We have again used screens at this development; here we specified a mesh inlaid glass by Sabre Glass in the WC cubicles to create



GARETH GARDNER

privacy and visual interest, as well as smoked larch timber veneer joinery storage by Atlantic Joinery.

This element of personalisation and individuality continues into commercial projects. Office receptions now feel more like clubs, with multiple seating clusters catering for a range of users and purposes. This informality extends to our designs for the bathrooms, resulting in rooms with more individuality and personality than a typical office WC.

At 7 Clarges Street in Mayfair we are deconstructing the standard office bathroom suite into its individual elements, including continuous black Corian shelving, individual Keuco Elegance light mirrors with integrated head and base light fittings and Duravit Architec vanity basins. Rather than specifying generic accessories, such as soap dispensers and paper towel holders, we let the client choose which products they will use, since these elements themselves are now design objects in their own right and will resonate with the users' own individual brand identity.

Currently we are designing a co-working space on Phipp Street in Shoreditch where we are specifying a robust palette of materials and products, including concrete flooring and bespoke cast-concrete vanities on metal frames, referencing the context of the building and providing a hard-wearing and flexible canvas for the user. Azuleg DTA03 patterned tiles by Domus create an animated feature, while the rest of the palette remains neutral, offering opportunities for building owners and users to add their own personal layer through artwork and objects.

Maria Cheung and Marcie Larizadeh, Squire and Partners

Far left Washbasins at 7 Clarges Street
Top left Moroccan rug at Macaulay Road
Top middle Academy House, Oxford Street
Top right Mosaic tile splashback at Macaulay Road
Left Marble and onyx at St Edmund's Terrace