

The Studio / Squire and Partners

02:00 - 26 April, 2017

Save this project

Like 13 Tweet Pin it



Architects	: Squire and Partners
Location	: Greencoat Pl, Westminster, London SW1P, United Kingdom
Area	: 0.0 m2
Project Year	: 2017
Project Photographs	: Hufton & Crow , James Jones
Manufacturers	: Banker Wire, Iguzzini, XAL, Glazing Vision

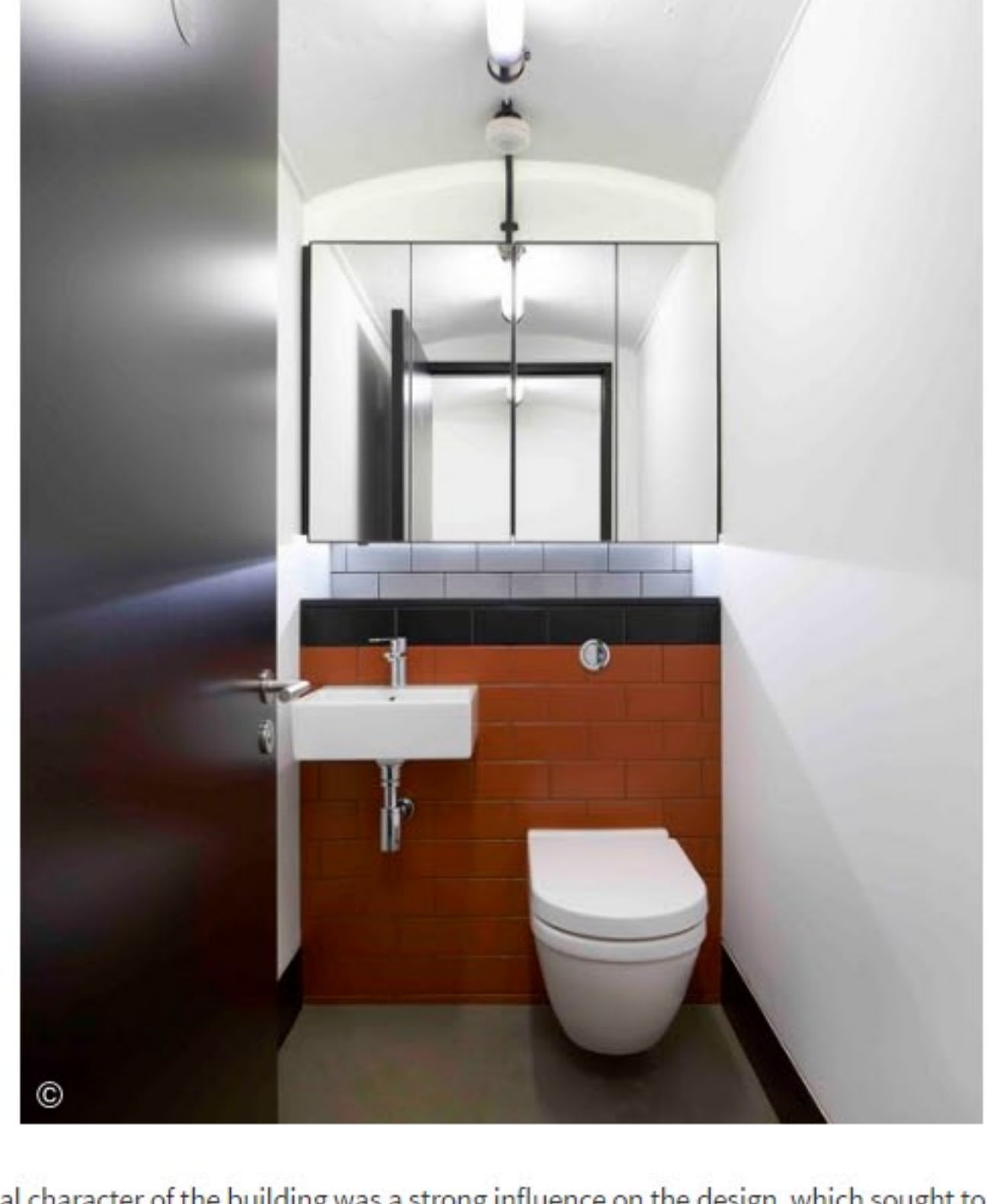
More Specs



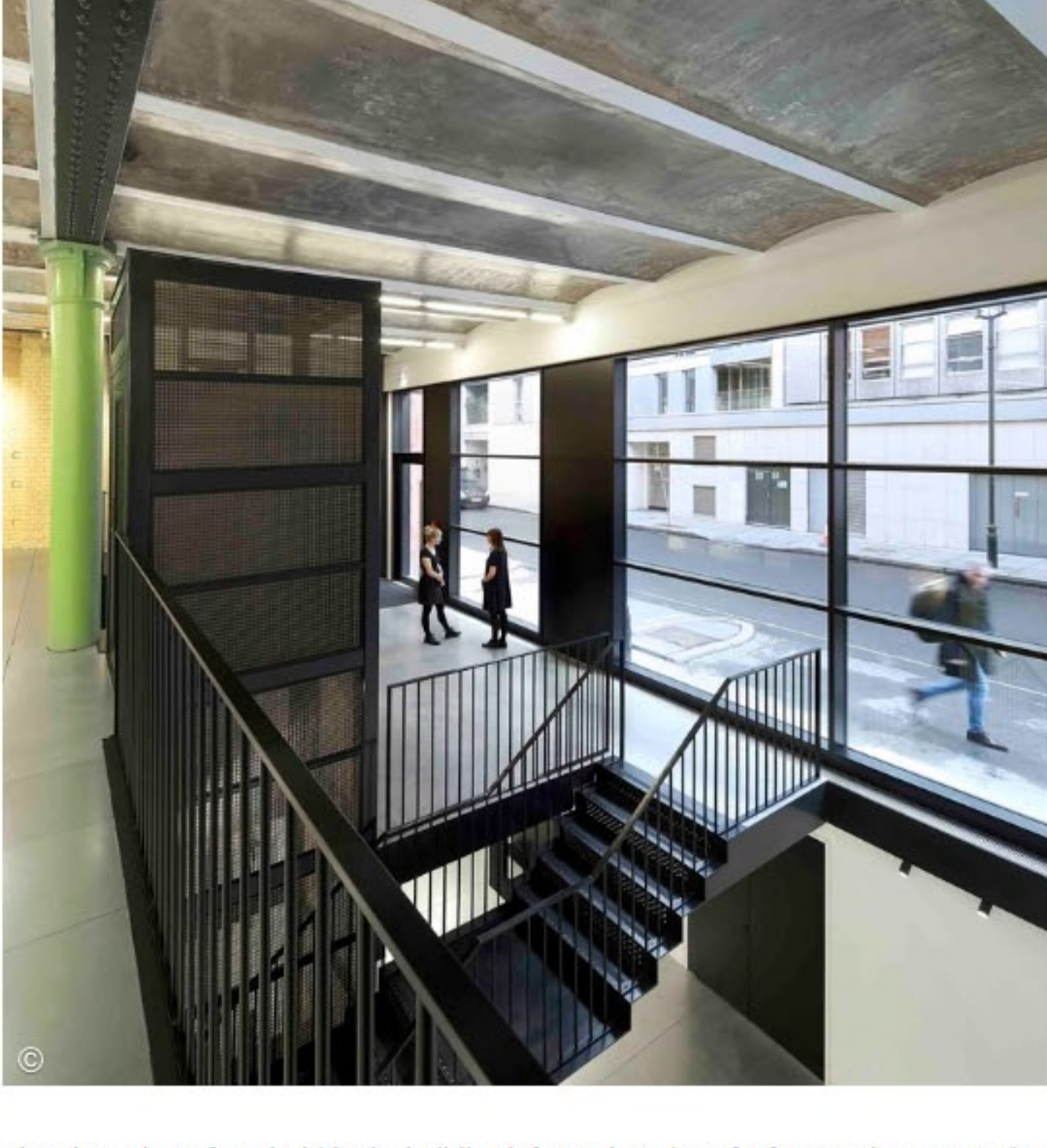
From the architect. The Studio was created by revitalising a former Victorian depository to provide two floors of bespoke open plan office with an animated street frontage. The unit is the latest in a series of Greencoat projects where Squire and Partners has collaborated with Derwent London to extensively refurbish and extend a family of Victorian industrial buildings to deliver bespoke creative workspace, over a 20 year period.



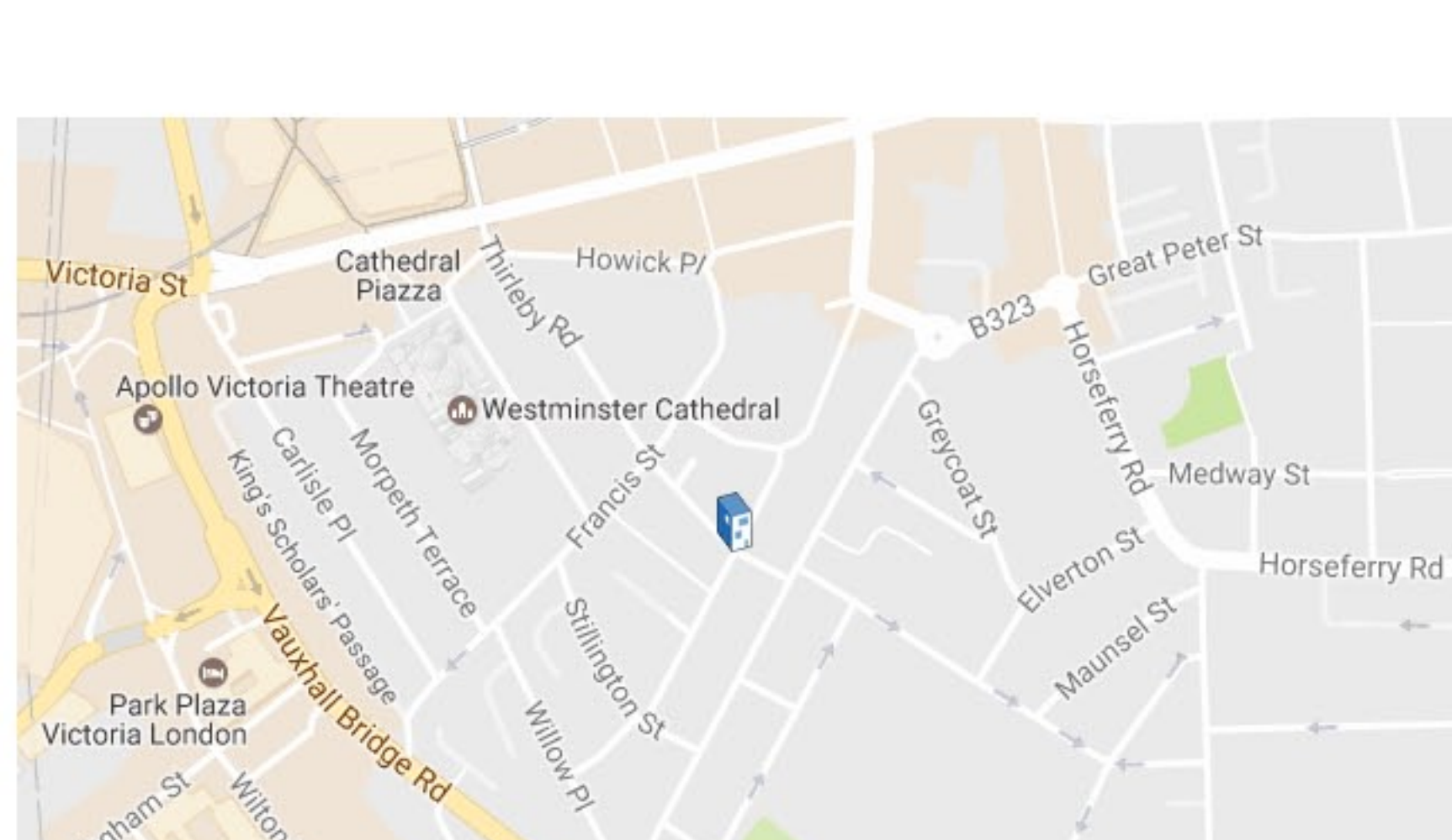
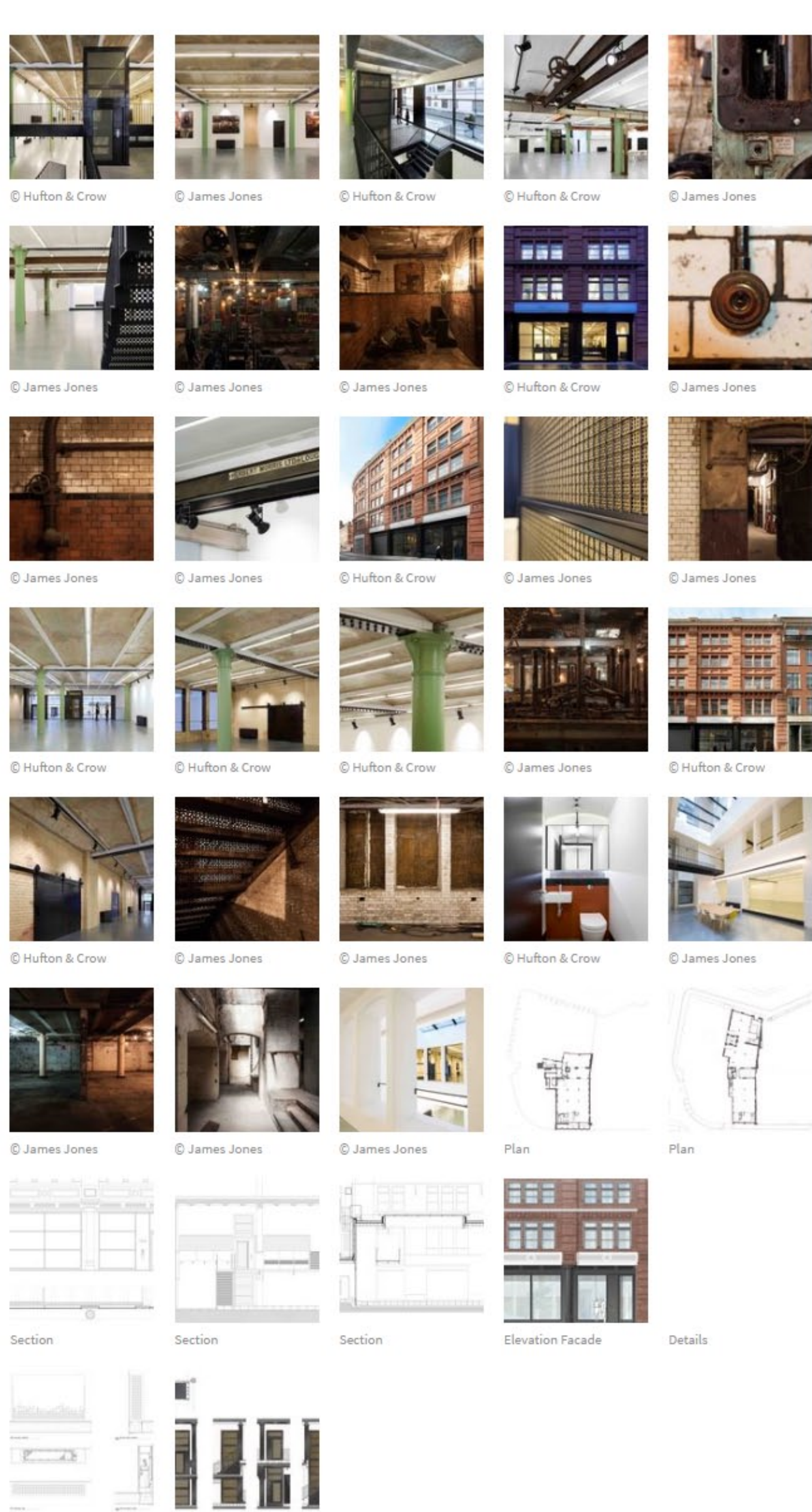
Externally, a metal framed glazed entrance screen with a latticed metal fascia affords views in and out of the space, accessed by a 3m high door with a full height brushed brass pull handle. The reception area has a polished concrete floor leading to two matt black steel staircases which feature a laser cut pattern and exposed bronze countersunk screws. A platform lift is encased with two layers of patterned mesh in fine brass and black copper plate. Office spaces are provided at lower and upper ground levels, linked by a top lit central lightwell spanned by a black steel bridge, which draws natural light deep into the plan.



The industrial character of the building was a strong influence on the design, which sought to retain elements of the robust structure within a modern open plan workspace. Existing features such as vaulted concrete ceilings, brick walls and ochre coloured lifting beams were exposed to their raw state, and highlighted with modern light fittings, while other industrial mechanisms such as sliding doors, pulleys and window shutters were refurbished to reference the former use.



Original Victorian colours found within the building informed a palette to feature elements such as structural beams in Signal Black and cast iron columns in Colchester Lathe Green. Inspiration was taken from existing patterns and motifs to create a series of contemporary elements including bespoke laser-cut casings for heating/cooling units and patterned floor tiles in the WCs.



Location to be used only as a reference. It could indicate city/country but not exact address.

Save this project

Like 13 Tweet Pin it

Products: Steel Concrete Brick

See more: Projects Built Projects Selected Projects Workshop Greater London

United Kingdom

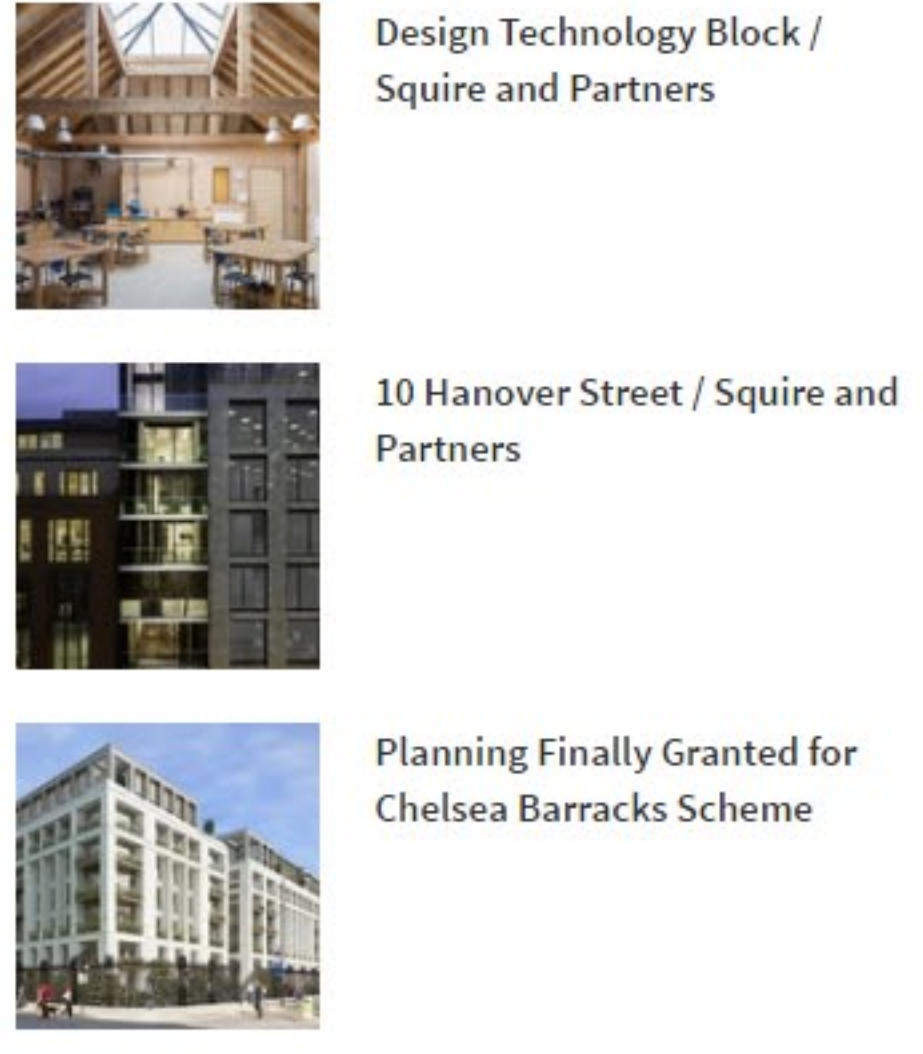
USER BOOKMARKS

Label: Next trip to Japan

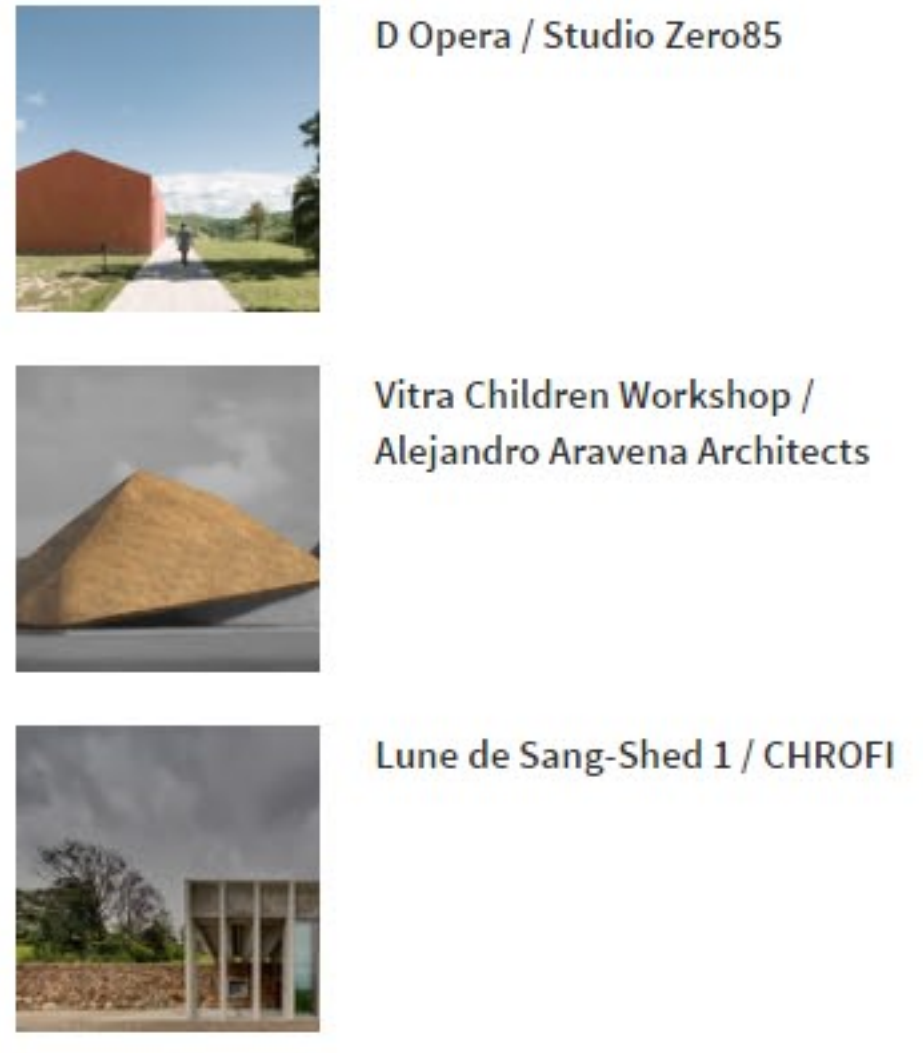


Organize and save your references >

MORE FROM SQUIRE AND PARTNERS

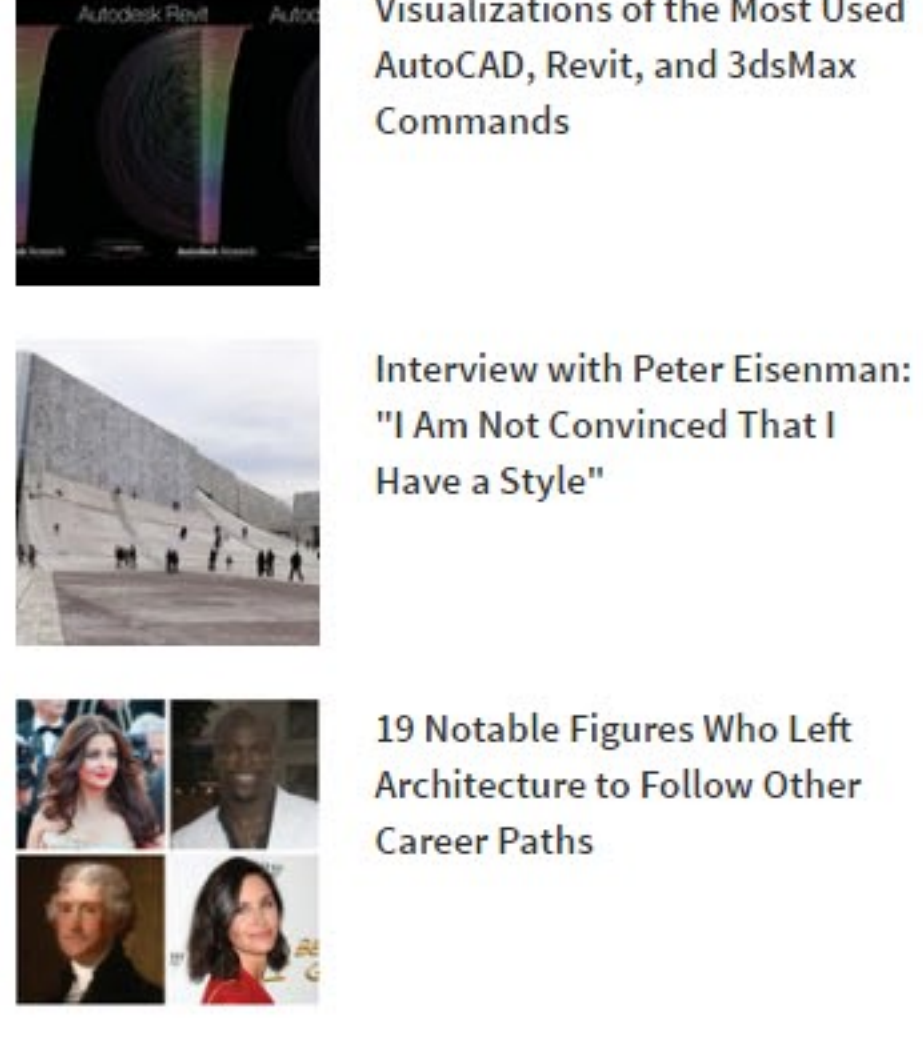


MORE WORKSHOP



More Workshop >

MOST VISITED



MOST VISITED PRODUCTS

