

# Design Technology Block / Squire and Partners

09 JAN 2016

Projects Built Projects Selected Projects Schools Surrey United Kingdom Architect: Squire and Partners Material: Wood

Bookmark

12

Like

Tweet

4



Courtesy of Squire and Partners

Architects: **Squire and Partners**

Location: **Surrey, UK**

Photographs: **Courtesy of Squire and Partners**

A+U 544: Sigurd Lewerentz Drawing Collection I

Publications



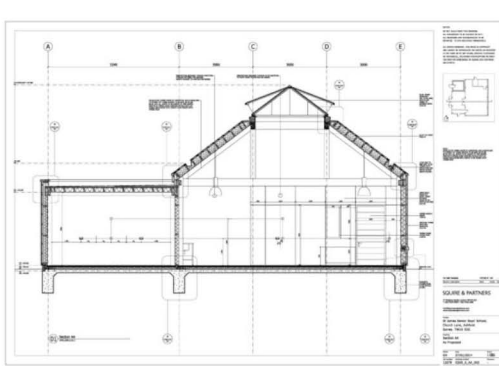
Contractor: **STP Solutions Ltd**  
Quantity Surveyor: **Bollingbrook**  
Structure: **Eckersley O'Callaghan**  
Wood Supplier: **Carpenter Oak & Woodland**



Occupying an area within the St James School grounds previously home to an ad hoc collection of sheds and storage units, the new Design Technology block was designed to accommodate 20 students and two teaching staff as well as an office, plant and store room.



Courtesy of Squire and Partners



Floor Plan



Courtesy of Squire and Partners

Taking inspiration from the craftsmanship and simple technology of timber-frame buildings in the southeast of England, the simple building envelope is clad in a black vertical weather-board and cover strip system, within which we detailed a concealed gutter and flush pyramidal roof-light, ensuring the purity of the building form was not compromised.



Courtesy of Squire and Partners

The dark external cladding provides a striking contrast to the light Douglas Fir timber interior. Here, traditional pegged mortise and tenon joints of the timber frame are counterpoised by steel hex-head fixings and sheets of birch-faced ply panels lining the walls, balancing tradition and modernity. The honesty of construction and robust interior provide a simple and practical backdrop for the workshop activities within.



Courtesy of Squire and Partners



Courtesy of Squire and Partners



Courtesy of Squire and Partners



Courtesy of Squire and Partners



Courtesy of Squire and Partners



Courtesy of Squire and Partners



Courtesy of Squire and Partners



Courtesy of Squire and Partners



Courtesy of Squire and Partners



Courtesy of Squire and Partners



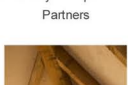
Courtesy of Squire and Partners



Courtesy of Squire and Partners



Courtesy of Squire and Partners



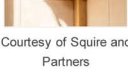
Courtesy of Squire and Partners



Courtesy of Squire and Partners



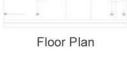
Floor Plan



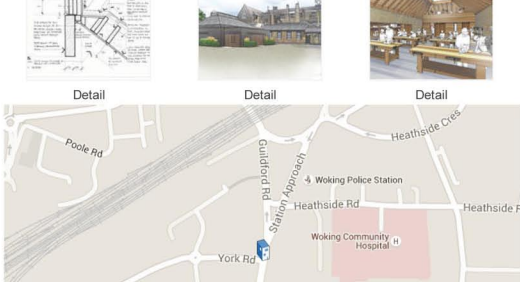
Detail



Detail



Detail



Location to be used only as a reference. It could indicate city/country but not exact address.

Cite: "Design Technology Block / Squire and Partners" 09 Jan 2016, ArchDaily. Accessed 11 Jan 2016. <http://www.archdaily.com/780045/design-technology-block-squire-and-partners/>

AUTODESK REVIT Pay As You Go. Flexible, Accessible & Affordable. SUBSCRIBE NOW

MORE FROM SQUIRE AND PARTNERS: 10 Hanover Street / Squire and Partners Selected Projects; Planning Finally Granted for Chelsea Barracks Scheme Unbuilt Project; Mayfair House / Squire and Partners Selected Projects

MORE SCHOOLS: A grid of images showing various school buildings.

MOST VISITED: The Beauty of Symmetry in 12 Photos Architecture News; Take a Look Inside OMA's Timmerhuis with #donotsettle Articles; From Digital to Built: Six Experiments With Brick Misc

MOST VISITED PRODUCTS: Porcelain Tiles - Cava Grespania Tiles / Mosaic / Gresite; Architectural Fabric - TENARA SEFARA Architecture Tensile Structures; TerraPreCast™ Ceramic Cladding System Boston Valley Terra Cotta Concrete Systems

It took just 40 seconds to grow the American cherry used in this project. growninseconds MORE INFO >