

A new Education and Community Centre adjacent to Brixton Windmill

Architecture, Featured, Thursday 09 Mar, 2017

[Pin](#) 1
 [G+](#) 2
 [Like](#) 8
 [Share](#) 29
 [Email](#) 1
 [In Share](#) 1
 [Tweet](#) 2
 [Share](#) 22

Squire and Partners have been granted consent for a new Education and Community Centre adjacent to [Brixton Windmill](#), on behalf of Lambeth Council and Friends of Windmill Gardens (FoWG), the charity who manages the restored Grade II* listed windmill.



Brixton Windmill Education Centre © Squire and Partners

The building is designed as a flexible space which will serve a variety of users – including school groups, adult education initiatives, community groups and local residents – and act as a visitor centre for FoWG who host regular Open Days and festivals. The facility supports the expansion of milling activities and the social enterprise which sells Brixton Windmill flour to local bakeries, restaurants and retailers, as well as running baking workshops.



Brixton Windmill Education Centre © Squire and Partners

Designs respond to the site's agricultural history by creating a contemporary crafted pitched roof structure using a Douglas Fir timber frame, and cladding the exterior in a dark weatherboard. The structure is book-ended by two gable walls in a black brick to reference the tar sealed Windmill tower.

Internally, the main space features the exposed timber frame and full height sliding doors opening onto a decked external terrace overlooking the park. A grain store, kitchen, administration, cycle parking and WC's are also provided.



Brixton Windmill Education Centre © Squire and Partners

Squire and Partners proposal gives Lambeth Council and Friends of Windmill Gardens a flexible, cost effective and self-sustaining facility which will serve the local community and support the future use of the Brixton Windmill and Windmill Gardens.

Work is expected to start on site May 2017 and complete late summer.

Jean Kerrigan, chair of Friends of Windmill Gardens:

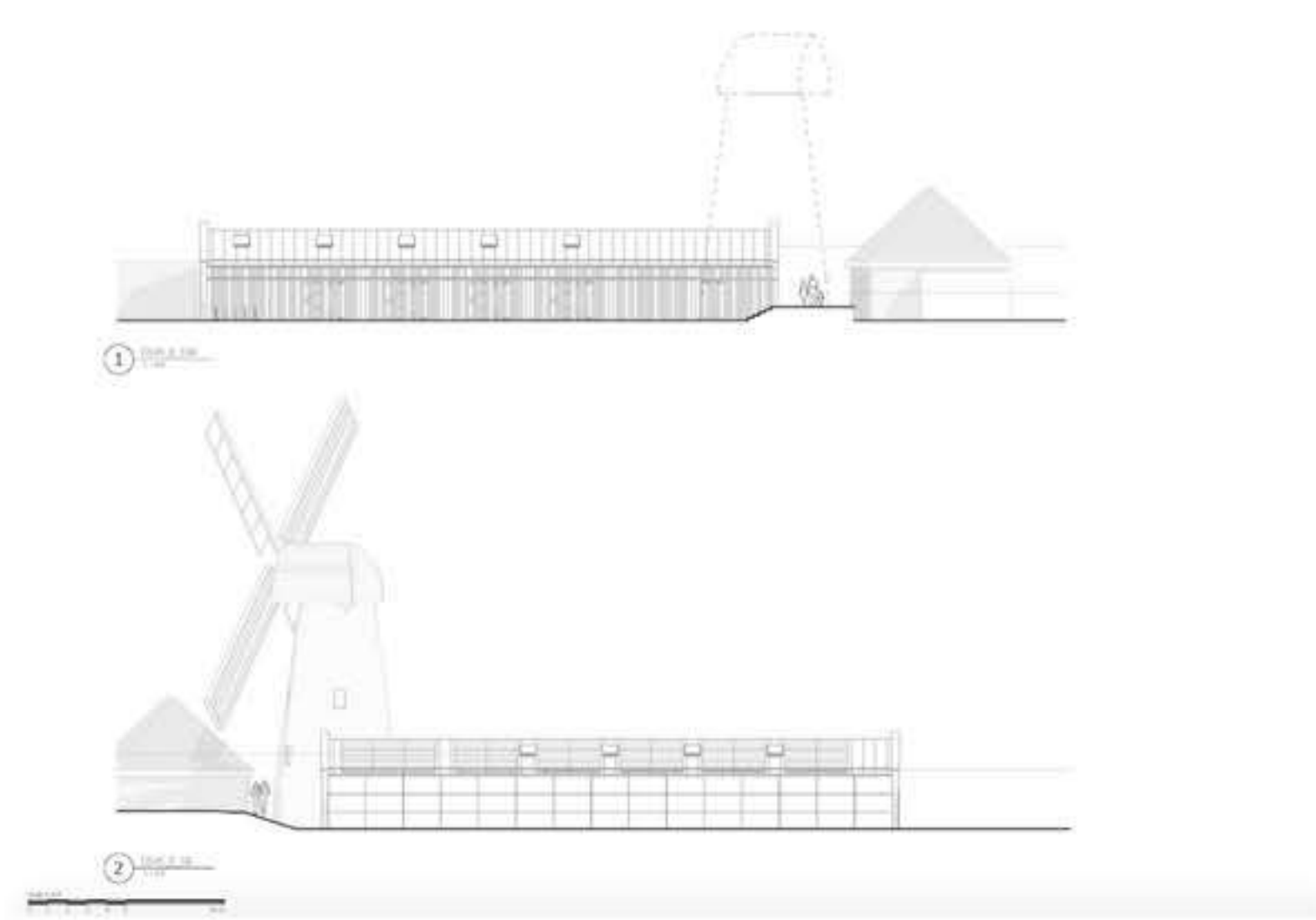
"We are delighted. The new building will allow us to educate both young and adult visitors about this wonderful heritage building in the centre of Brixton. We thank Lambeth Council for funding this project and architects, Squire and Partners, for their design, commitment and generous support for this project."

Client: Lambeth Investment & Growth, Friends of Windmill Gardens

Structure: [Heyne Tillet Steel](#)

Services: [Hoare Lea](#)

Cost Consultants: [Mace](#)



Brixton Windmill Education Centre_NW and SE Elevations

This entry was posted on Thursday, March 9th, 2017 at 9:06 am. It is filed under Architecture, Featured and tagged with Brixton Windmill, Heyne Tillet Steel, Hoare Lea, Lambeth Council, Mace, Squire and Partners, Windmill Gardens. You can follow any responses to this entry through the RSS 2.0 feed.



Leave a Reply

Name (required)
 Mail (will not be published) (required)
 Website

Submit Comment

Recent Articles

- [International Conference 'Between Data and Senses'](#)
- [WeWork recently opened their latest collaborative workspace](#)
- [A new Education and Community Centre adjacent to Brixton Windmill](#)
- [Project Soane VR Experience](#)
- [Whose responsibility are green spaces?](#)
- [Architect Dièbédo Francis Kéré to design Serpentine Pavilion 2017](#)
- [At Paul Kirby's Foam Shop](#)

Design Exchange Partners:

[Orms](#)
[DELTAUGHT](#)
[RIBA #1](#)
[ARTS THREAD](#)
[Designersblock](#)
[SURFACE DESIGN SHOW](#)
[CLERKENWELL DESIGN WEEK](#)
[women shift digital](#)
[SUPER BRANDS LONDON](#)
[ARCHITECT @WORK](#)
[TRACES](#)
[archi products](#)
[design-up!](#)
[TENT LONDON](#)

Footer

- [About](#)
- [Contact](#)
- [Vacancies](#)
- [Terms & Conditions](#)
- [Subscribe to entries](#)

All content © 2017 by Design Exchange

Site design by [kingsleyman.co.uk](#)