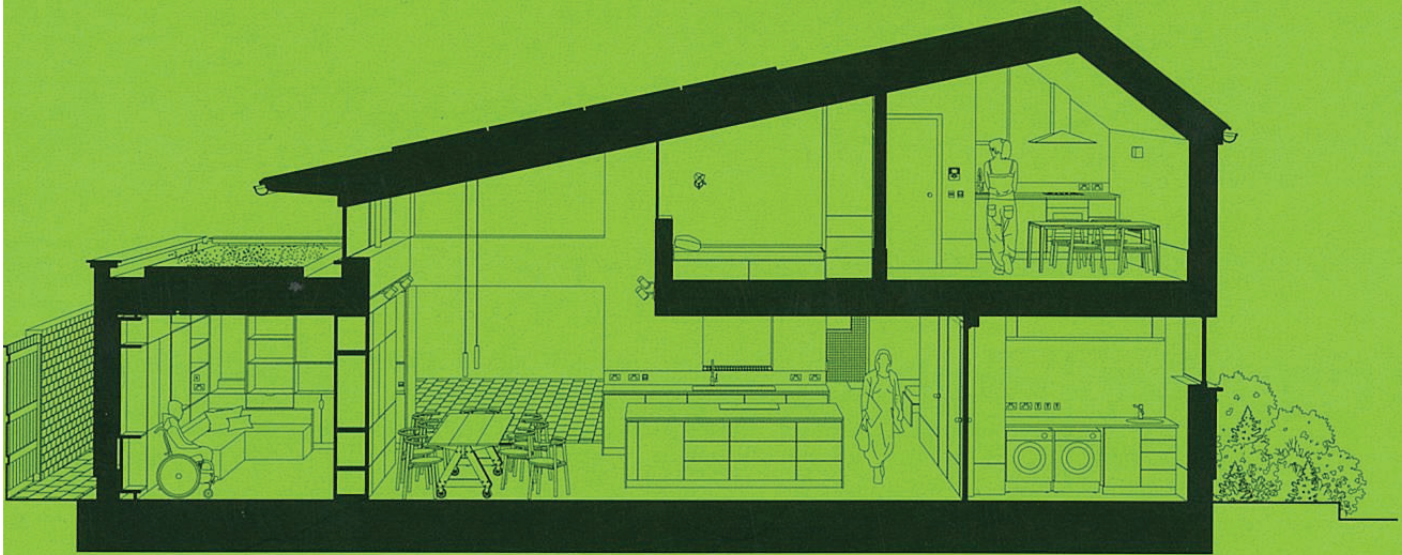


Specification

Nag's Head Market by Office S&M
The Common Rooms by Artefact
The Little Big House by Knox Bhavan



Kitchens and bathrooms

LEADER

Kitchens and bathrooms

'It's naïve to think that we can stop building altogether. But we do need to be more thoughtful about how we do it. And material reuse is one way,' says Rachel Hoolahan, associate and sustainability co-ordinator at Orms, when discussing her recently published research paper on materials passports, produced in collaboration with Lancaster University. You can read the full interview summarising the practice's recommendations in this month's In Practice. As she emphasises: 'So much of what we do as architects is learned from the shared experiences of others.'

As ever, it's best to start small and learn from others. And this month's kitchens and bathrooms case studies provide lessons on accessibility and designing for communities on a low budget.

The first case study is the incremental renovation of Nag's Head Market on Seven Sisters Road by Office S&M. Implemented over the course of six years and after seven planning applications, the practice has overhauled

entrances on both sides of the market to assist with wayfinding and created a new mezzanine floor that houses traders in a food hall. It also hosts a Neighbourhood Kitchen, which provides a low-cost professional cooking facility for local food

start-ups. As practice co-founder Hugh McEwen says: 'Food has the ability to bring communities together.'

Artefact has also completed a community kitchen, which features in our second case study. The Common Rooms in Upper Clapton has been designed for charity Clapton Commons and consists of the transformation of a disused undercroft of a church. A dining room where the community comes together to cook and share food is at the heart of the scheme.

In contrast, our third case study is a custom-built, energy-efficient dwelling in Hertfordshire designed to meet the specific needs of its occupant, Henry Fraser, who experienced a life-changing accident over 10 years ago. Considerable attention has been given by architects Knox Bhavan to the design of the bedroom and bathroom to ensure abundant daylight and views and surpass conventional accessibility standards.

Finally, in The Regs Geoff Wilkinson responds to overblown reports of the 'collapse' of Building Control and reiterates that architects must adapt to evolving responsibilities, particularly regarding the Principal Designer role. How? By learning from each other and working collaboratively. *Fran Williams*

AJ Specification

4th floor, Harmsworth House, 15 Bouverie Street, Temple, London EC4Y 8DP
020 3953 2736

Enquiries

Email
firstname.surname@emap.com

Telephone
020 3953 (plus extension)

AJ technical editor and deputy architecture editor
Frances Williams (2813)

AJ Specification editor
Rob Wilson (2812)

AJ editor
Emily Booth (2721)

AJ managing editor
Will Hurst (2990)

Production editor
Alan Gordon

Freelance production editor Simon Aldous

Freelance art editor
Ana Schefer

Commercial director
Frazer Stokes (2924)

Senior account manager
Louise Sweeney (2750)

Senior account manager
Richard Dye (2661)

Senior account manager
Justin Heron (2682)

Senior event manager
Ollie Sumner (2776)

Production manager
Laura Barretto (2684)

Managing director
Nick Stimpson



AJ Specification is published by emap, a member of the Metropolis Group. Metropolis Group respects the privacy of every person for whom we have personal data. We comply with data protection legislation such as the Data Protection Act 1998 and the General Data Protection Regulation, which regulates the processing of data and ensures that your data is processed fairly and lawfully, is kept secure and only that data necessary for any processing is kept. You can see our privacy policy at www.metropolis.co.uk/privacy. An emap service. Printed by Stephens & George, Merthyr Tydfil. Registered as a newspaper with the Post Office ISSN 1748 8575



EDITOR'S CHOICE

On the radar



JAMES BALSTON



CDUK

- Squire & Partners** unveiled a 'Stone Tapestry' at the 2024 Surface Design Show last month. For four years Squire & Partners, in collaboration with the Stone Federation, has been invited to curate a natural stone exhibit in the show's Stone Gallery. This year the exhibit was produced with The Stonemasonry Company and Webb Yates Engineers. The exhibit used reclaimed stone to show off its colours and textures. The exhibit featured materials from Albion Stone, Britannicus Stone, Dunhouse Quarry, Hutton Stone and Tradstocks and will be on display at Clerkenwell Design Week (21-23 May). squireandpartners.com stonefed.org.uk
- Timber Development UK**, the UK's timber suppliers' trade association, has released embodied carbon data for more than 95 per cent of timber consumed in the UK. The free-to-access data covers 10 product categories and is offered to help architects and other specifiers make accurate assessments of the carbon impacts of their material choices. The *2024 Embodied Carbon Data for Timber Products* report, which is independently verified by Construction LCA, calculates weighted average A1-A4 carbon data for common timber products from softwood to engineered timber to panel products. See it at timberdevelopment.uk/resources/embodied_carbon_data_for_timber_products
- Surface materials supplier **CDUK** has unveiled Vita Nova, a take-back and repurposing service for minimising waste generated by the surface materials industry. Vita Nova was set up in response to the issue of the 450 tonnes of solid surface materials that go to landfill annually. The solution is under way at the Vita Nova workshop in Leeds, where CDUK sorts, reclaims and repurposes surface material waste to create new products, part sheets or aggregates. The supplier is able to take back materials from its whole portfolio, which includes Corian Solid Surface, PaperStone, Polygood and Montelli Surfaces. cdukltd.co.uk
- Lighting designer **Lodes** has launched its first collaboration with artist/designer Ron Arad. The result is a lamp, named 'Cono di Luce', created using borosilicate glass. It has a slender, truncated cone shape with the light source placed on top, creating a 'cone of light' effect in use. Printed Circuit Board technology was used to make the lamp's graphic motif. Circuit boards are composed of layers of fibreglass and copper containing LED chip circuits. The material's various levels of transparency make areas of overlapping dark and light bands with over 200 chips in a lamp. The lamp comes in red, grey or gold finishes. lodes.com
- Foster + Partners Industrial Design** has collaborated with German manufacturer **FSB** to create a range of door handles in aluminium, stainless steel and bronze finishes. The design of the FSB 1292 product range has a freehand curve. The collection is built around product 1291, a handle with a short, deep profile, allowing the hand to rest naturally. 1292 takes the same design language into a more classic lever design, while 1293 fulfils EN 179 requirements for escape routes. The range includes doorknobs, lever handles, safety handles, pull handles and coat hooks. fosterandpartners.com fsb.de

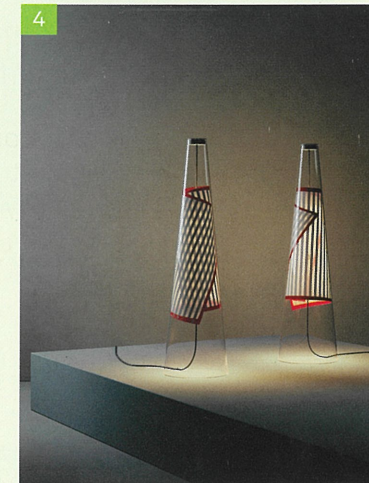
2

TIMBER DEVELOPMENT UK

Table 1: Weighted average A1-A4 embodied carbon data for common timber products

Product	Weighted average A1-A4 embodied carbon (kg CO2e/m³)
Softwood (Sawn)	120
Softwood (Engineered)	130
Softwood (Panel)	140
Softwood (Glulam)	150
Softwood (CLT)	160
Softwood (Mass Timber)	170
Softwood (Timber Decking)	180
Softwood (Timber Cladding)	190
Softwood (Timber Joist)	200
Softwood (Timber Truss)	210
Softwood (Timber Roof)	220
Softwood (Timber Floor)	230
Softwood (Timber Wall)	240
Softwood (Timber Ceiling)	250
Softwood (Timber Stair)	260
Softwood (Timber Bench)	270
Softwood (Timber Table)	280
Softwood (Timber Chair)	290
Softwood (Timber Bed)	300
Softwood (Timber Bedstead)	310
Softwood (Timber Bed Frame)	320
Softwood (Timber Bed Base)	330
Softwood (Timber Bed Mattress)	340
Softwood (Timber Bed Pillow)	350
Softwood (Timber Bed Blanket)	360
Softwood (Timber Bed Duvet)	370
Softwood (Timber Bed Sheet)	380
Softwood (Timber Bed Pillowcase)	390
Softwood (Timber Bed Bedspread)	400
Softwood (Timber Bed Bedcover)	410
Softwood (Timber Bed Bedding)	420
Softwood (Timber Bed Bed Linen)	430
Softwood (Timber Bed Bed Towel)	440
Softwood (Timber Bed Bed Bath Sheet)	450
Softwood (Timber Bed Bed Bath Towel)	460
Softwood (Timber Bed Bed Bath Mat)	470
Softwood (Timber Bed Bed Bath Rug)	480
Softwood (Timber Bed Bed Bath Carpet)	490
Softwood (Timber Bed Bed Bath Mat)	500

TIMBER DEVELOPMENT UK



DANIEL MARSHALL



SUMMUNSTUDIO